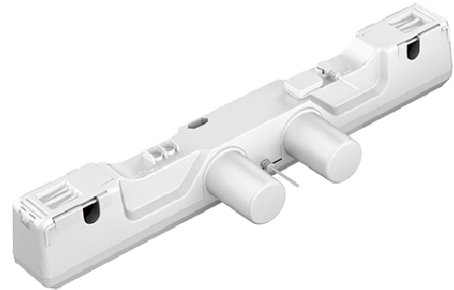


JC35S11 Dual Motor

Application field - Furniture Line
Preferably in slatted beds

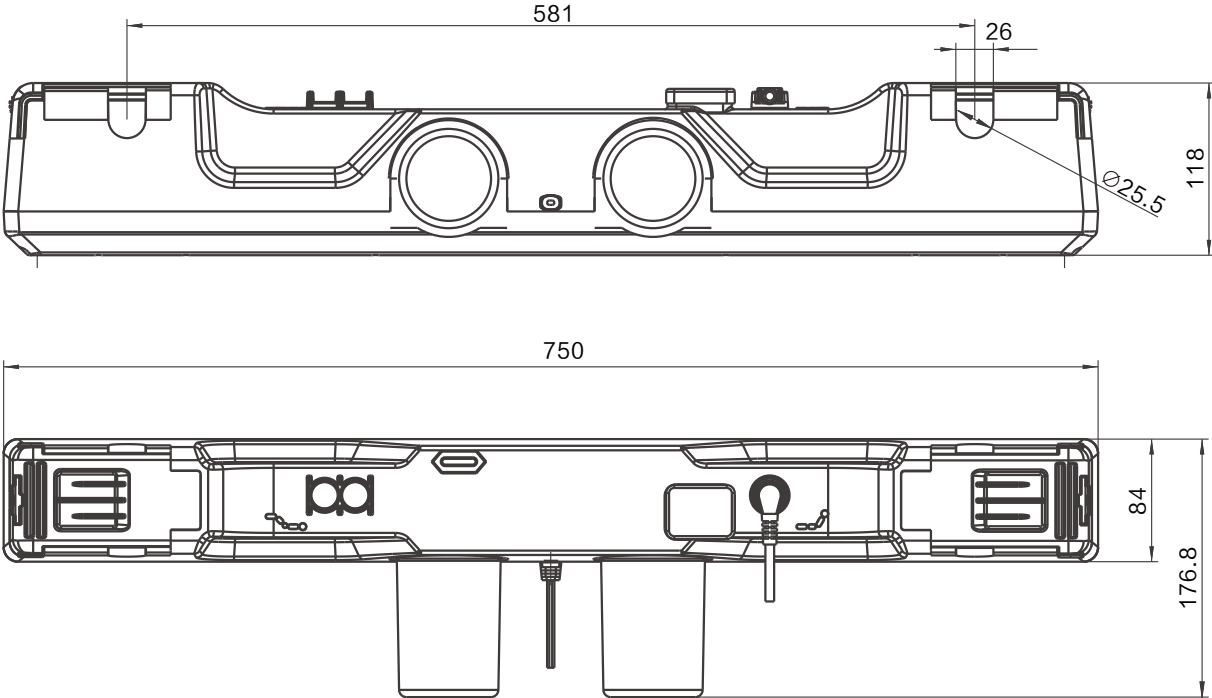
JC35S11 is a dual motor integrated with power, unit control and motion. It is of low noise and meeting the primary functions.



General Features

| | |
|---------------------------------|---|
| Dynamic load push*(N): | 2*4500 |
| Input voltage(VAC): | 100VAC~240VAC |
| Output voltage(VDC): | 29 |
| Stroke length (mm): | Backrest stroke: Max.87mm Legrest stroke: Max.69mm |
| Installation dimensions: | L=581mm |
| Noise level: | Single action ≤ 50dB, (environmental noise ≤ 40dB) Linkage action ≤ 53dB, (environmental noise ≤ 40dB) |
| Colour: | Black (RAL 9005) or Grey (RAL 7035) |
| Limit switch: | Built-in (electrical) |
| Weight: | About 4.6kg |
| Static bending moment: | Lateral loads are not allowed |
| Duty cycle: | 10%, max. 2min. continuous working and 18 min. off |
| Max IP grade: | IP20 |
| Supporting control box: | JCHQ35 |
| Standards: | EN60335-1:2012+A11+A13+A1+A2+A14 EN62233:2008 ENISO12100:2010 |

Dimension Drawing



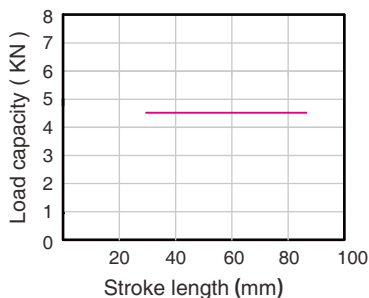
Technical Parameters

| Voltage (VDC) | Spindle pitch (mm) | Max.Load capacity (N) | Self locking (N) | Speed no load (mm/s) | Speed full load (mm/s) | Current full load (A) |
|---------------|--------------------|-----------------------|------------------|----------------------|------------------------|-----------------------|
| 29 | 3 | 2*4500 | 2*4500 | 4.7 | 3.5 | 3 |

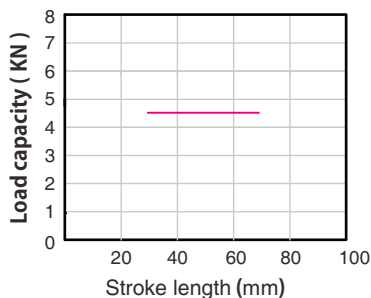
Remark: the above data are typical values at 25°C

Stroke length versus load

Backrest stroke & Load

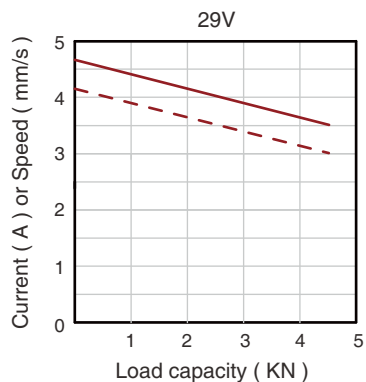


Legrest stroke & Load



Characteristic

4500N



Typical speed ———
Min. speed - - - -

Ordering Key

Take **JC35S1104D530529230/65/87/69B23D0** for example

| | | |
|---|--------------|---|
| Model | JC35S11 | |
| Optional features | 0 | 0 = Standard |
| Load in push | 4D5 | 4D5 = 4500N |
| Speed at full load | 3D5 | 3D5 = 3.5mm/s |
| Output voltage | 29 | 29 = 29 VDC |
| Input voltage/Power/ Backrest stroke/ Footrest stroke | 230/65/87/69 | 230=230VAC/65=65W/Backrest stroke=XX/Footrest stroke=XX |
| Type of plug and cable | B2 | B2 = European 2-round pins flat plug XN3 = South African 3 round pins plug in triangle pattern |
| Cable length | 3D0 | 3D0 = 3.0M |



Strictly abiding by medical safety certifications

Passed EMC tests. To ensure our products pass all kinds of tests domestic or abroad.



Communication protocol development

Aiming at different applications, develop more extensive functions for control system.



Professional customization

Powerful R&D strength, fully satisfy customers' needs. Development cycle is about 10 days, seizing more market opportunities.



Intelligent Control of Bluetooth

Better Mobile phone as the remote, applying in home care. Market pioneer, Jiecang provides better choices.



Wireless Communication

Controllers adopt high-frequency wireless system. It can avoid interference mixing with signal receivers, assisting in remote control over medical equipment.



Latest Weighing System

Designed for physiotherapy beds and medical care beds. Cantilever carrying weighing sensor, it is applicable to different bedsteads dispensing with any adjustment.



Notes for mounting and usage can be found in the corresponding mounting manual.