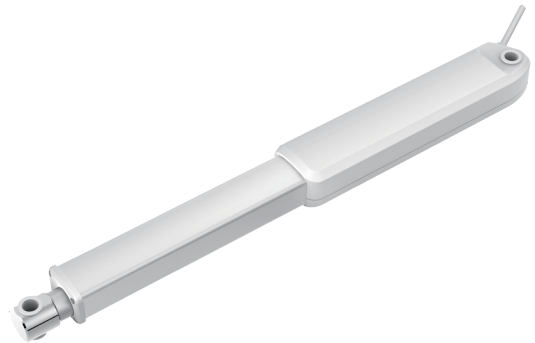


JC35N8 Linear Actuator

Application field - Medical Line
 Preferably in medical beds, nursing beds, patient lift and etc.

JC35N8 is a line actuator with large load capacity, compact structure of small volume as well high IP grade of IPX6.

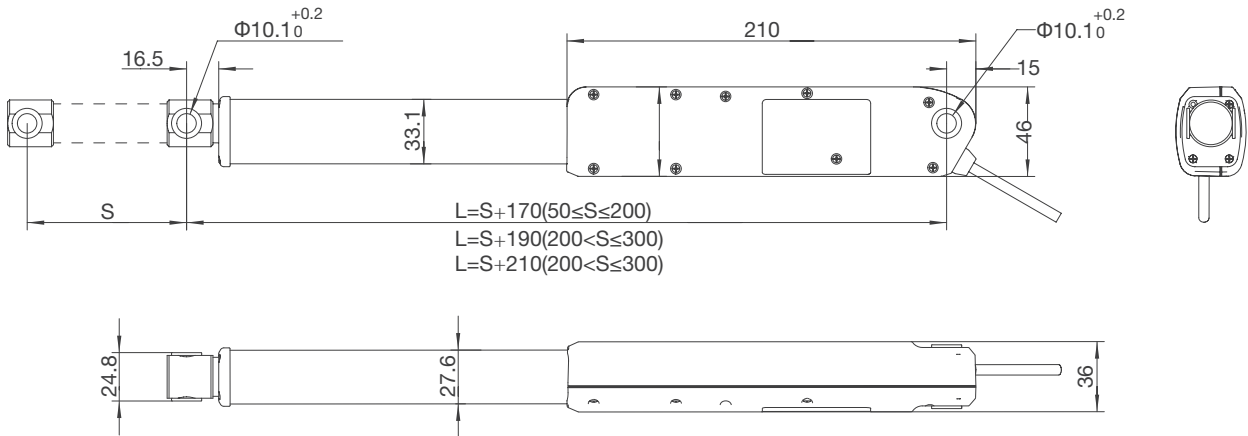


General Features

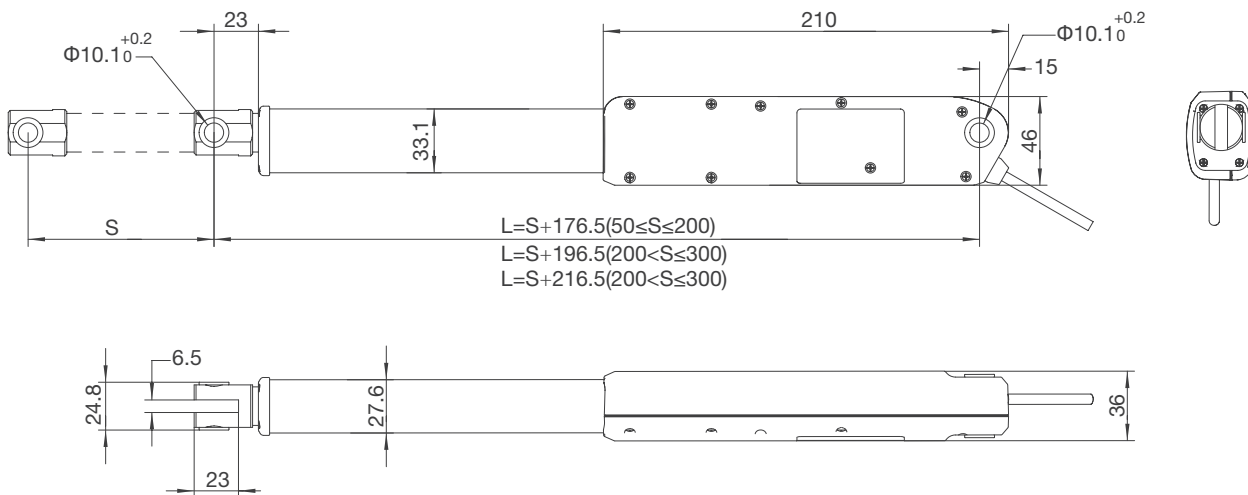
Load in push (N):	2500 2000 1500 800 500
Load in pull (N):	900
Motor rated voltage Input Input (VDC):	24 29
Installation dimensions:	L=S+170 (50≤S≤200, standard) L=S+190 (200<S≤300, standard; 50≤S≤200, only push) L=S+210 (200<S≤300, only push)
Stroke length (mm):	2500N: 50-300mm (in steps of 4mm) / 2000N: 50-300mm (in steps of 4mm) 1500N: 50-300mm (in steps of 4mm) / 800N: 50-300mm (in steps of 4mm) 500N: 50-300mm (in steps of 4mm)
Options:	Safety nut, Hall sensor, Only push
Colour:	Black (RAL 9005) / Grey (RAL 7035)
Limit switch:	Built-in (electrical)
Weight:	About 0.8kg (different stroke length and installation dimensions with different weight)
Duty cycle:	10%, max. 2min. continuous use
Max IP grade:	IPX6
Noise level:	≤58dB (environmental noise ≤40dB)
Static bending moment:	lateral load is not allowed
Fatigue test:	JC35N8 has passed the tests at the max. load and at the 120mm stroke under the duty cycle of 10%.
Standards:	CE

Dimension Drawing

Top clevis F39, end clevis B25



Top clevis F40, end clevis B25

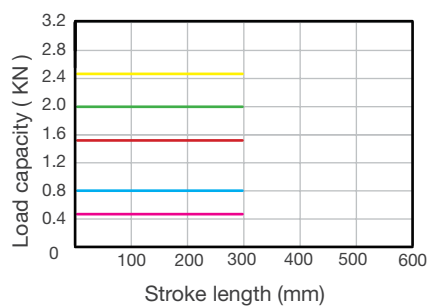


Technical parameters

Input voltage (VDC)	Spindle pitch (mm)	Max.Load capacity (N)	Self locking (N)	Speed no load (mm/s)	Speed full load (mm/s)	Current full load (A)
24	2.5	2500	1500	3.8	2.8	1.8
24	3.0	2000	1500	4.5	3.4	1.8
24	3.0	1500	1500	4.5	3.6	1.8
24	5	800	800	7.3	6.3	1.8
24	6	500	500	8.8	8	1.8
29	2.5	2500	1500	4.6	3.7	1.8
29	3.0	2000	1500	5.5	4.5	1.8
29	3.0	1500	1500	5.5	4.7	1.8
29	5	800	800	8.8	7.8	1.8
29	6	500	500	10.5	9.5	1.8

Remark: the above data are typical values at 25 °C

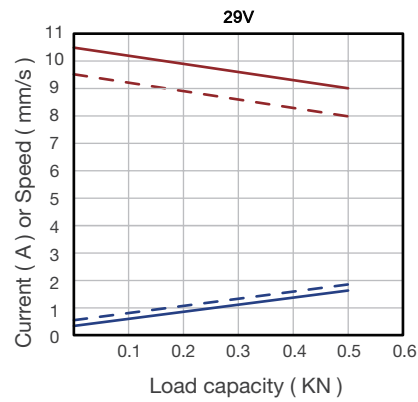
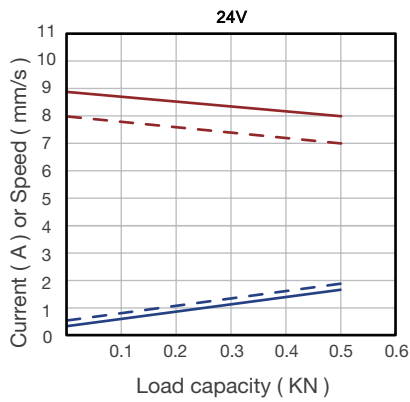
Stroke length versus load



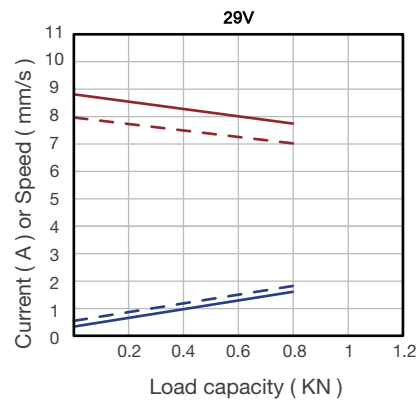
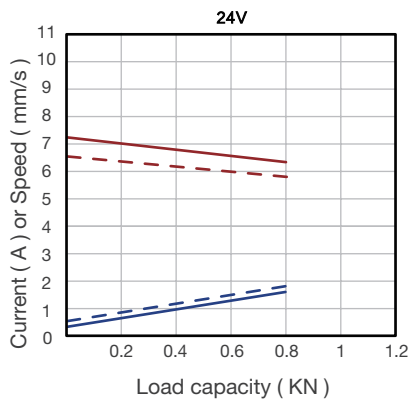
Characteristic

Typical speed ———
 Min. speed - - - -
 Typical current ———
 Max. current - - - -

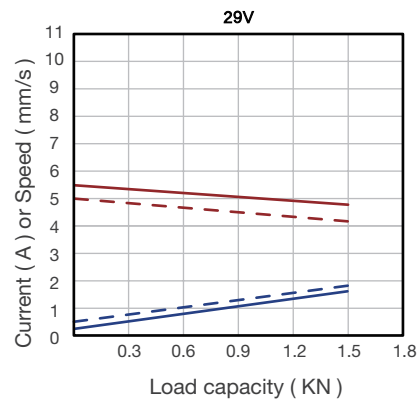
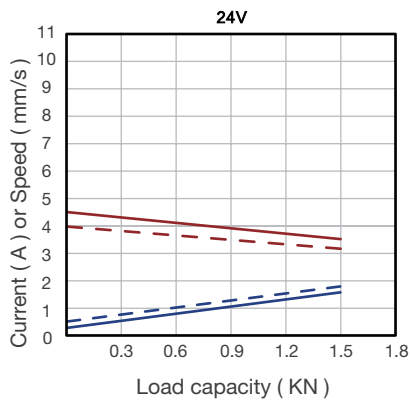
500N



800N

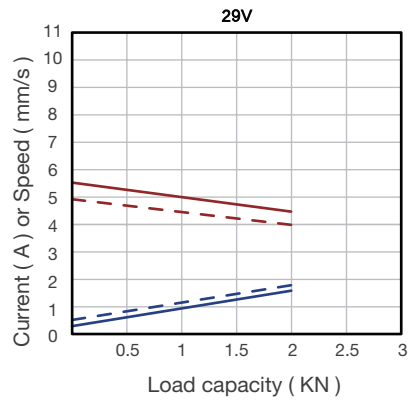
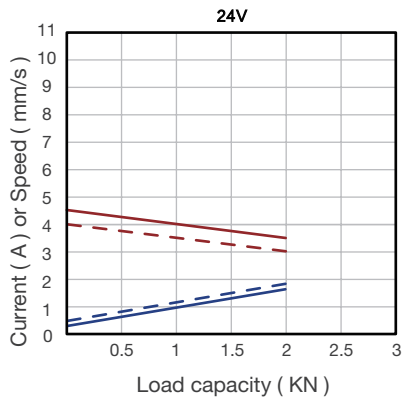


1500N

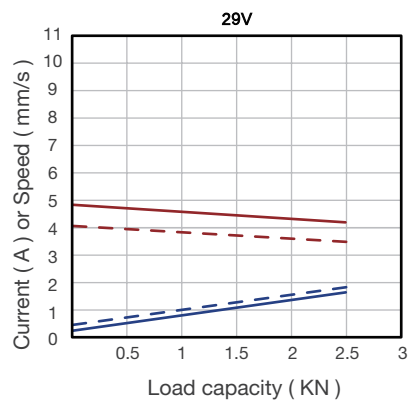
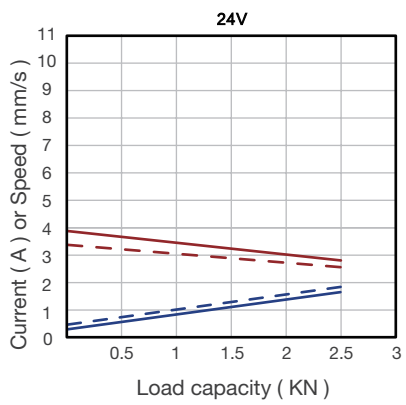


2000N

Typical speed ———
Min. speed - - - - -
Typical current ———
Max. current - - - - -



2500N



Ordering Key

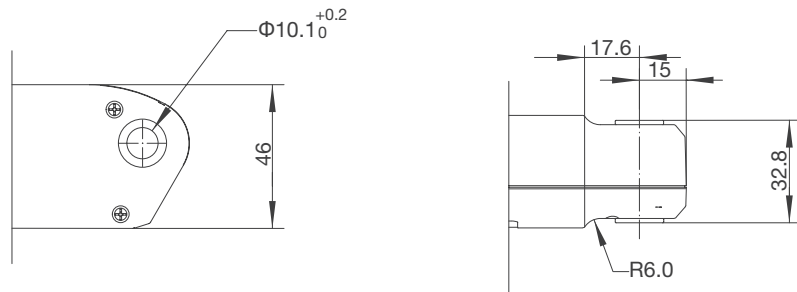
Take **JC35N802D52D824100/2700G25S390020D5** for example

Model	JC35N8	
Optional features	0	0 = Standard / P = Only push / S = With safety nut Y = With hall sensor / J = Only push+safety nut N = Only push + safety nut + hall sensor
Load in push	2D5	2D5=2500N / 2=2000N / 1D5=1500N 0D8=800N / 0D5=500N
Speed at full load	2D8	2D8=2.8mm/s 3D4=3.4mm/s 3D6=3.6mm/s 6D3=6.3mm/s 8=8mm/s
Input voltage	24	24 = 24 VDC
Stroke length/ Installation dimension	100/275	Stroke length = XXX Installation dimension = XXX
Clevis directions	0	0 = Standard
Color	G	G = Grey (RAL7035) / B = Black (RAL9005)
End clevis specification	25	25 = B25; without slot, hole 12.5, 10.1 with bushing; JC35N8 end clevis integral to the shell
End clevis material	S	S = Plastic
Top clevis specification	39	39 = F39: steel, without slot, hole 12.5, 10.1 with bushing, matching Φ 20 tube 40=F40: steel, slot 6.5, hole 12.5, 10.1 with bushing, matching Φ 20 tube
Brake specification	0	0 = No brake
Type of plug and cable	02	02 = 4-pin DIN plug 21 = 6-pin ET plug
Cable length	0D5	0D5 = 0.5m / 1D5=1.5m

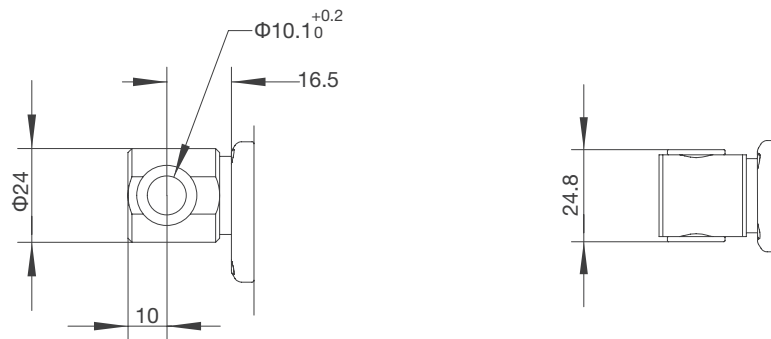
Ordering Details

Dimension drawing of clevis

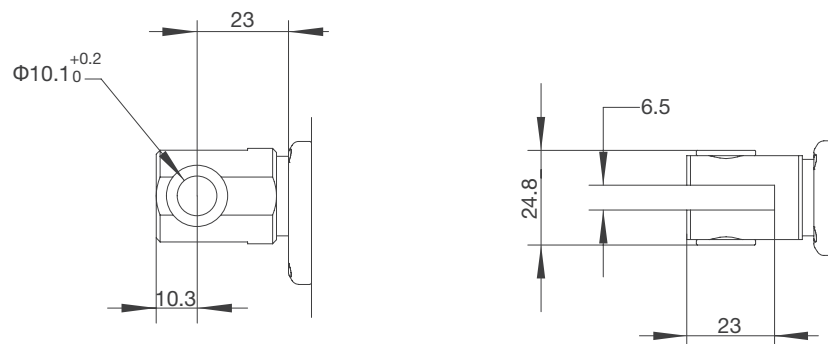
End clevis: B25



Top clevis: F39



Top clevis: F40

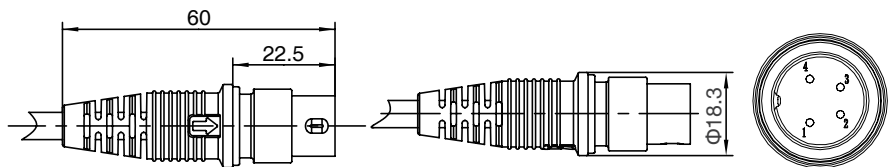


Motor wire

4-pin straight plug (standard)

Matching controller: JCB35Q/
JCB35T/ JCB35R/ JCB35R1/
JCB35S/ JCB35K2

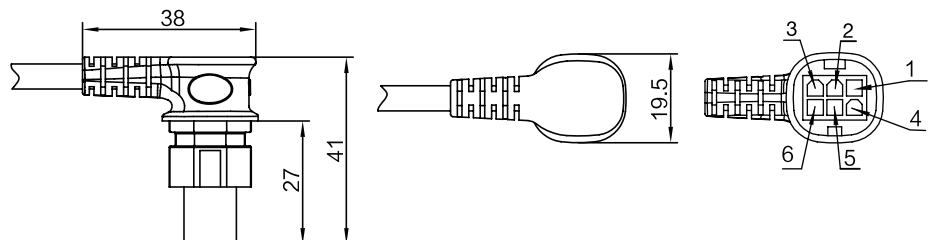
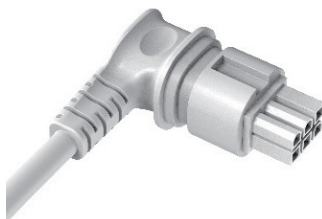
Pin	Color	Function
1	NC	Not connected
2	Brown	When positive voltage power on, actuator will go down
3	Blue	When positive voltage power on, actuator will go up
4	NC	Not connected
Outer ring	NC	Not connected



6 Pin Mini-Fit elbow plug

Matching control box :JCB35T2/
JCB35T3/JCB35Q3/JCB35K3

Pin	Color	Function
1	Orange	When not on lower limit, link with red wire
2	Black	When not on upper limit, link with yellow wire
3	Red	When not on lower limit, link with orange wire
4	Brown	When positive voltage power on, actuator will go down
5	Blue	When positive voltage power on, actuator will go up
6	Yellow	When not on upper limit, link with black wire





Strictly abiding by medical safety certifications

Passed EMC tests. To ensure our products pass all kinds of tests domestic or abroad.



Communication protocol development

Aiming at different applications, develop more extensive functions for control system.



Professional customization

Powerful R&D strength, fully satisfy customers' needs. Development cycle is about 10 days, seizing more market opportunities



Intelligent Control of Bluetooth

Mobile phone as the remote, applying in home care. Market pioneer, Jiecang provides better choices



Wireless Communication

Controllers adopt high-frequency wireless system. It can avoid interference mixing with signal receivers, assisting in remote control over medical equipment.



Latest Weighing System

Designed for physiotherapy beds and medical care beds. Cantilever carrying weighing sensor, it is applicable to different bedsteads dispensing with any adjustment



Notes for mounting and usage can be found in the corresponding mounting manual