

JC35L22 Linear Actuator

Application field - Medical Line
Preferably in hospital bed, nursing bed and etc.

JC35L22 is a compact, powerful and cost-effective actuator. Its low barriers to entry can enhance the competitiveness of your equipment.

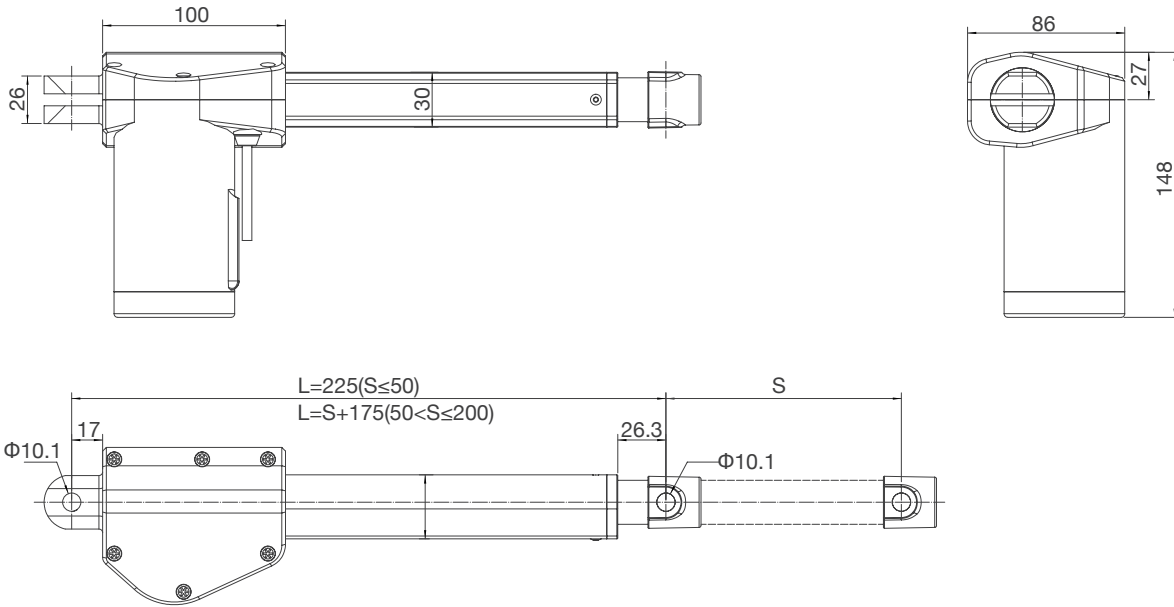


General Features

Load in push (N):	6000
Motor rated voltage Input (VDC):	29
Stroke length:	6000N: 50-200mm (in steps of 4mm)
Installation dimensions (mm):	$L=S+175$ ($50<S\leq 200$)
Colour:	Grey (RAL 7035) / Black (RAL 9005)
Limit Switch:	Built-in (electrical)
Noise level:	≤ 45 dB (environmental noise ≤ 35 dB)
Static bending moment:	Lateral load is not allowed
Duty cycle:	10%, max. 2min. continuous use
Max IP grade:	IPX4
Options:	Signal switch, Hall sensor, Only push
Standards:	IEC60601-1: 2012 EN 60601-1:2006+A12:2014 ANSI/AAMI ES60601-1:2005/(R)2012 and A1:2012, C1:2009/(R)2012 and A2:2010/(R)2012

Dimension Drawing

Standard version, top clevis F16, end clevis B10

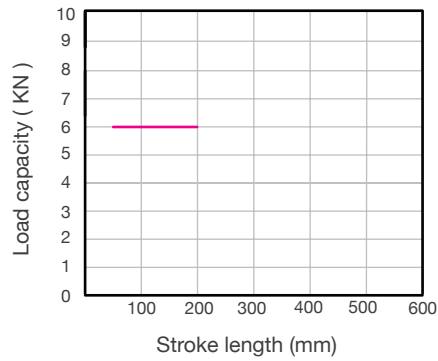


Technical parameters

Power voltage (VDC)	Spindle pitch (mm)	Max.Load capacity (N)	Self locking (N)	Speed no load (mm/s)	Speed full load (mm/s)	Current full load (A)
29	3	6000	6000	4	2.6	4

Remark: the above data are typical values at 25 °C

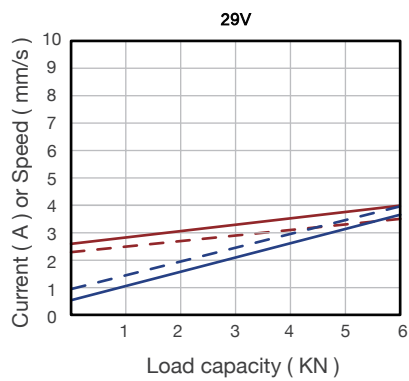
Stroke length versus load



Characteristic

6000N

- Typical speed ————
- Min. speed - - - - -
- Typical current ————
- Max. current - - - - -



Ordering Key

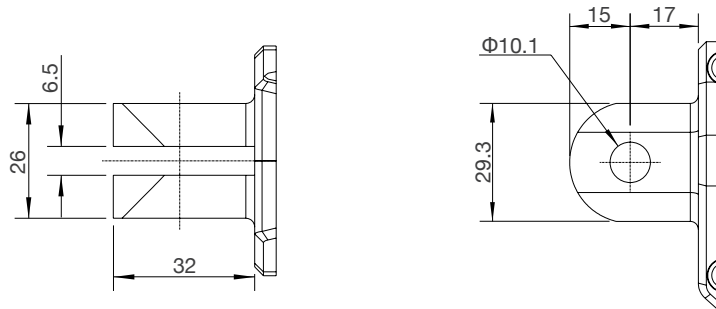
Take **JC35L22062D629100/275HG10S160021D5** for example

Model	JC35L22	
Optional features	0	0 = Standard / P = Only push / Y = Hall sensor
Load in push	6	6 = 6000N
Speed at full load	2D6	2D6 = 2.6mm/s
Input voltage	29	29 = 29VDC
Stroke length/ Installation dimension	100/275	Stroke length = XXX Retracted length = XXX
Clevis directions	H	H = H direction / V = V direction
Color	G	G = Grey (RAL7035) / B=Black (RAL9005)
End clevis specification	10	10 = B10; slot 6.5, depth 32, hole 10.1
End clevis material	S	S = Plastic
Top clevis specification	16	16 = F16; hole 10.1
Brake specification	0	0 = No brake
Type of plug and cable	02	02 = 4 pin DIN plug and 2 pin straight cable 10 = 5 pin DIN plug and 6 pin straight cable 93 = 6 pin ET waterproof bending plug 6pin straight cable
Cable length	1D5	1D5 = 1.5m / 1 = 1m

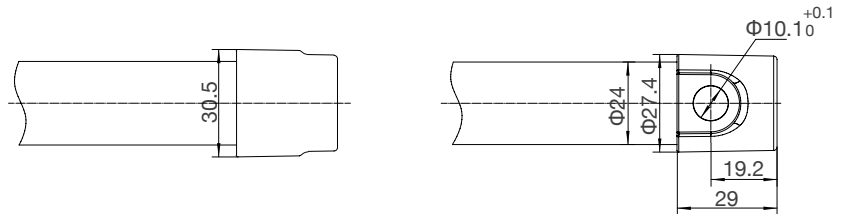
Ordering Details

Dimension drawing of clevis

End clevis: B10



Top clevis: F16

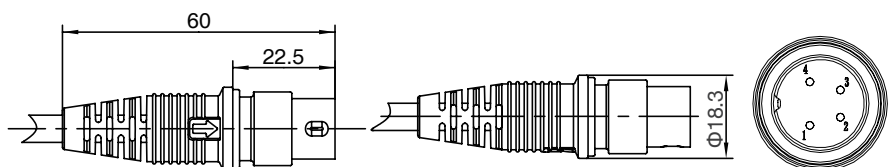


Motor wire

4-pin straight plug (standard)

Matching controller: JCB35Q/
JCB35T/ JCB35R/ JCB35R1/
JCB35S/ JCB35K2

Pin	Color	Function
1	NC	Not connected
2	Brown	When positive voltage power on, actuator will go down
3	Blue	When positive voltage power on, actuator will go up
4	NC	Not connected
Outer ring	NC	Not connected

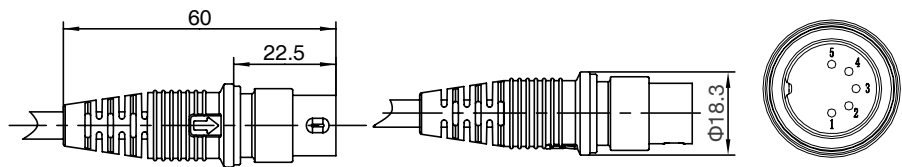


5 pin DIN plug (with Hall sensor)

Matching controller: JCB35Q/
JCB35T/ JCB35R/ JCB35R1/
JCB35S/ JCB35K2

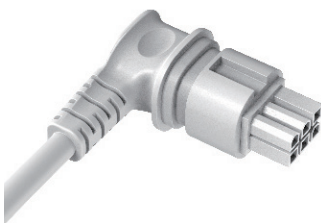


Pin	Color	Function
1	Red	5V
2	Brown	When positive voltage power on, actuator will go down
3	Black	GND
4	Blue	When positive voltage power on, actuator will go up
5	Yellow	Hall signal 1
Outer ring	Orange	Hall signal 2

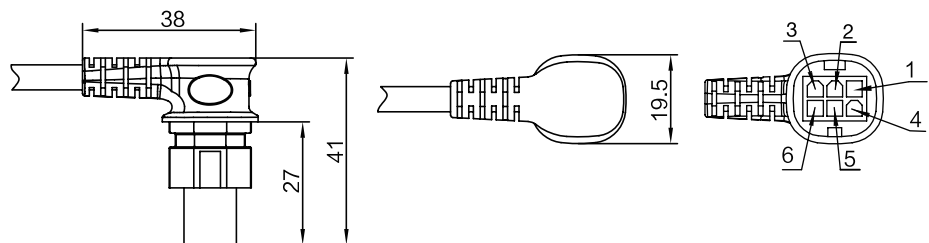


6 Pin Mini-Fit elbow plug

Matching control box :JCB35T2/
JCB35T3/JCB35Q3/JCB35K3



Pin	Color	Function
1	Orange	When not on lower limit, link with red wire
2	Black	When not on upper limit, link with yellow wire
3	Red	When not on lower limit, link with orange wire
4	Brown	When positive voltage power on, actuator will go down
5	Blue	When positive voltage power on, actuator will go up
6	Yellow	When not on upper limit, link with black wire





Strictly abiding by medical safety certifications

Passed EMC tests. To ensure our products pass all kinds of tests domestic or abroad.



Communication protocol development

Aiming at different applications, develop more extensive functions for control system.



Professional customization

Powerful R&D strength, fully satisfy customers' needs. Development cycle is about 10 days, seizing more market opportunities



Intelligent Control of Bluetooth

Mobile phone as the remote, applying in home care. Market pioneer, Jiecang provides better choices



Wireless Communication

Controllers adopt high-frequency wireless system. It can avoid interference mixing with signal receivers, assisting in remote control over medical equipment.



Latest Weighing System

Designed for physiotherapy beds and medical care beds. Cantilever carrying weighing sensor, it is applicable to different bedsteads dispensing with any adjustment



Notes for mounting and usage can be found in the corresponding mounting manual