

JC35B8 Linear Actuator

Application field - Medical Line
Preferably in homecare nursing or medical beds

Jiecang JC35B linear actuator is compact, quiet and powerful. It is designed to fit in areas specifically requiring an angle motor. It can be equipped with a fast motor and Hall sensor for feedback. Certifications for the JC35 B linear actuator include IEC60601-1, ES60601-1, UL73 and EMC.

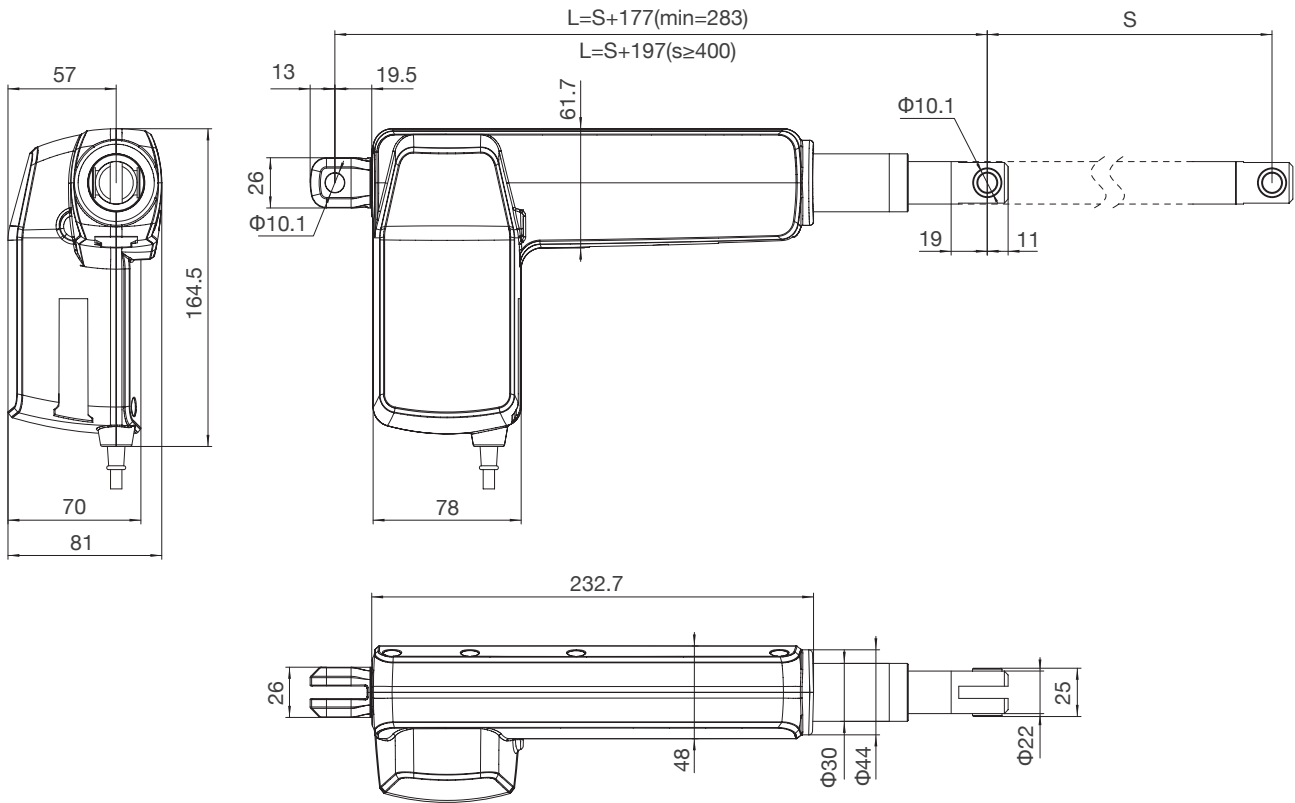
In addition, the JC35B is available with optional IPX6W rating.



General Features

Max./ Static Load push*(N):	6000 4000 2000 1000
Max./ Static Load pull*(N):	4000 4000 2000 1000
Motor rated voltage Input (VDC):	24 (permanent magnet motor)
Speed at Full Load:	3 (mm/s) 4 (mm/s) 8 (mm/s) 12 (mm/s)
Stroke Length (mm):	100 - 400 (option > 400)
Mounting position:	H-Type, V-Type
Colour:	Black (RAL 9005) or Grey (RAL 7035)
Limit Switch:	Built-in (electrical)
Overload Protection*:	Yes
Duty cycle:	10%, max. 2min. continuous use
IP Grade:	IP54 (Max. IPX6W)
Options:	Reed switch, push only, safety nut, Hall sensor
Standards:	IEC60601-1: 2012, EN60601-1:2006+A12:2014, ANSI/AAMI ES 60601-1: 2005/(R)2012 and A1: 2012, C1: 2009/(R)2012 and A2:2010/(R)2012

Dimension Drawing



Technical parameters

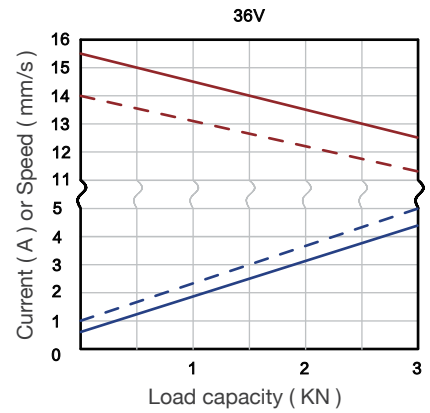
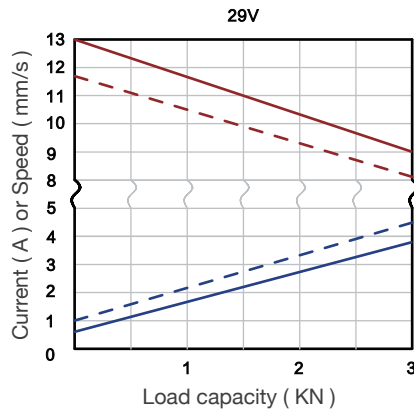
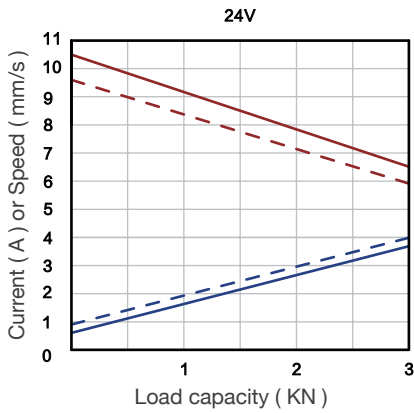
	Voltage (VDC)	Spindle pitch (mm)	Max.Load capacity (N)	Self locking (N)	Speed no load (mm/s)	Speed full load (mm/s)	Current full load (A)
Standard	24	4	6000	6000	5.5	3	5.5
	24	5	4000	4000	7	4	4.5
	24	7.5	3000	3000	10.5	6.5	4
	29	4	6000	6000	7	4.5	6
	29	5	4000	4000	8.5	5.5	5
	29	7.5	3000	3000	13	9	4.5
	36	4	6000	6000	8.3	5.8	6
	36	5	4000	4000	10.3	8.5	4.5
	36	7.5	3000	3000	15.5	12.5	5
Fast	24	4	6000	6000	7	4	6.5
	24	5	4000	4000	8.5	6	6.5
	29	4	6000	6000	8.5	5.5	6.5
	29	5	4000	4000	10.5	7.5	6.5
	36	4	6000	6000	10.3	8	6
	36	5	4000	4000	14.5	10.4	5.5

Remark: the above data are typical values at 25 °C

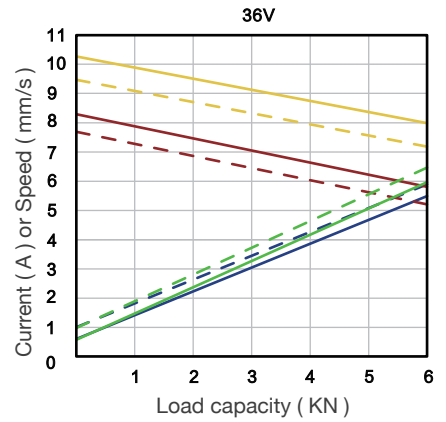
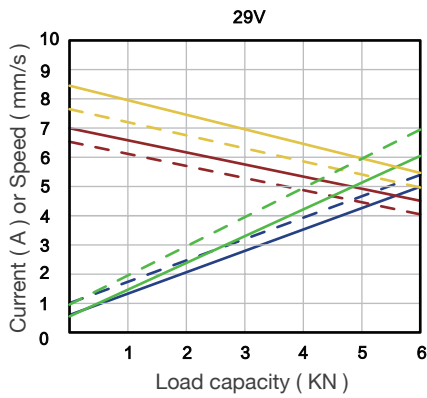
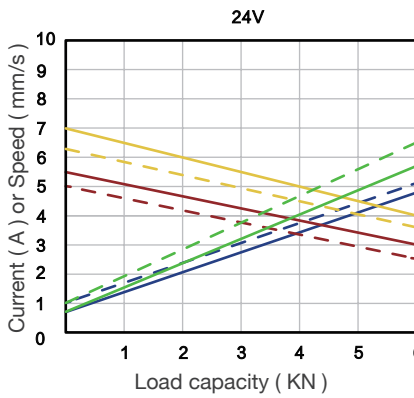
Characteristic

	Standard	Fast
Typical speed		
Min. speed		
Typical current		
Max. current		

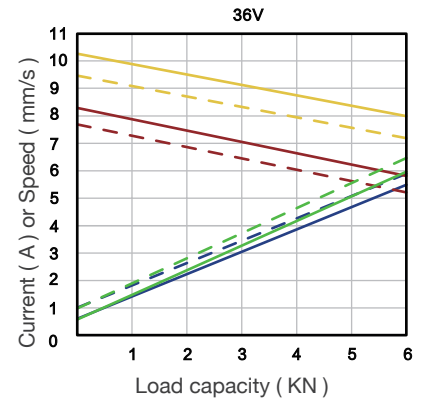
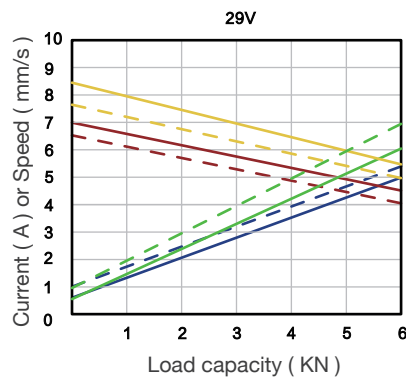
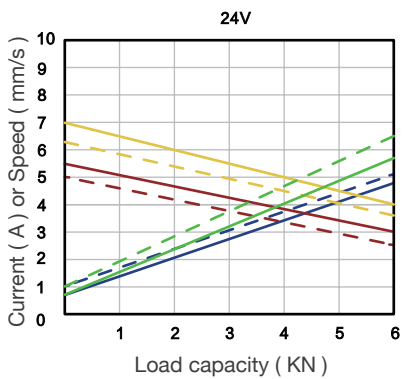
3000N



4000N



6000N



Ordering Key

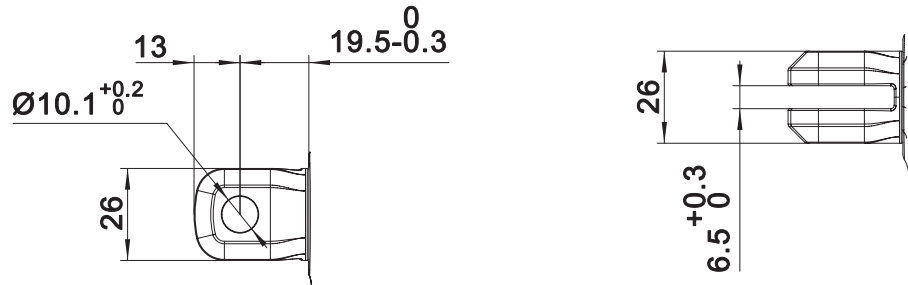
Take **JC35B806324150/327VGDZ052022D0** for example

Model	JC35B8	
Optional features	0	O = Standard / P = Push only / S = Safety nut Y = Hall sensor / R = Reed switch
Load in push	6	6 = 6000N 4 = 4000N 3 = 3000N
Speed at full load	3	3 = 3mm/s 4 = 4mm/s 6 = 6mm/s 6D5 = 6.5mm/s
Input voltage	24	24 = 24 VDC
Stroke length/ Installation dimension	150/327	Stroke length = XXX Installation dimension = XXX
Clevis directions	V	H = H direction / V = V direction
Color	G	G = Grey (RAL7035) / B = Black (RAL9005)
End clevis specification	D	D = slot 6.5, hole Φ 10.1
End clevis material	Z	Z = Zinc-Aluminum alloy T = Steel
Top clevis specification	05	05 = F05 slot 6.5, depth 26, hole Φ 12.5 with Φ 24 aluminum tube, hole Φ 10.1 with bushing
Brake specification	2	0 = no brake / 1 = brake in pull / 2 = brake in push
Type of plug and cable	02	02 = 4-pin DIN plug 10 = 5 pin DIN plug 93 = 6 pin Molex elbow plug
Cable length	2D0	2D0 = 2m / 0D5 = 0.5m

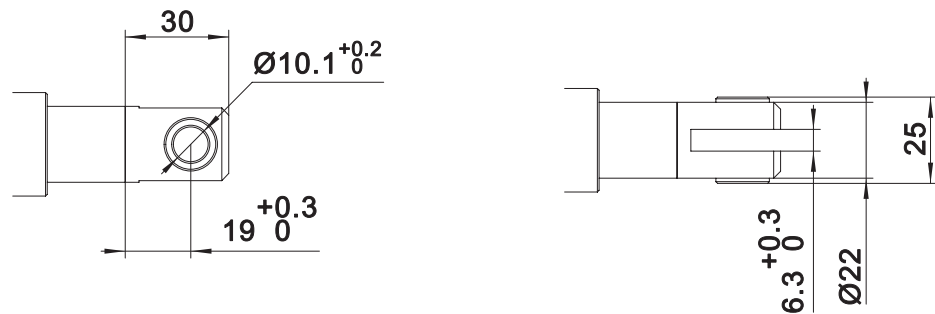
Ordering Details

Dimension drawing of clevis

End clevis: D



Top clevis: F05

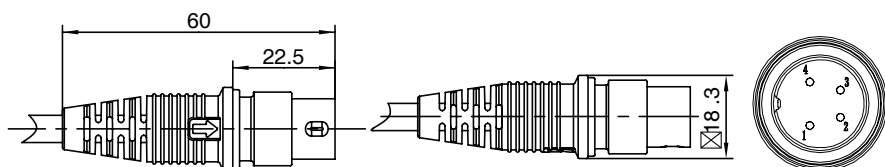


Motor wire

4-pin straight plug (standard)

Matching controller: JCB35Q/
JCB35T/ JCB35R/ JCB35R1/
JCB35S/ JCB35K2

Pin	Color	Function
1	NC	Not connected
2	Brown	When positive voltage power on, actuator will go down
3	Blue	When positive voltage power on, actuator will go up
4	NC	Not connected
Outer ring	NC	Not connected

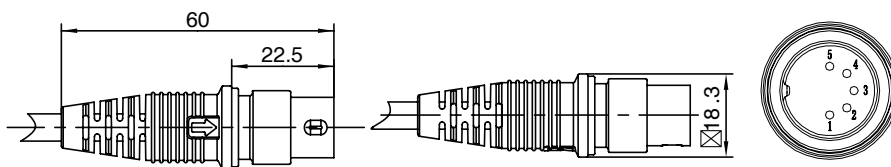


5 pin DIN plug (with Hall sensor)

Matching controller: JCB35Q/
JCB35T/ JCB35R/ JCB35R1/
JCB35S/ JCB35K2

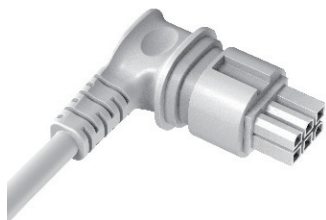


Pin	Color	Function
1	Red	5V
2	Brown	When positive voltage power on, actuator will go down
3	Black	GND
4	Blue	When positive voltage power on, actuator will go up
5	Yellow	Hall signal 1
Outer ring	Orange	Hall signal 2

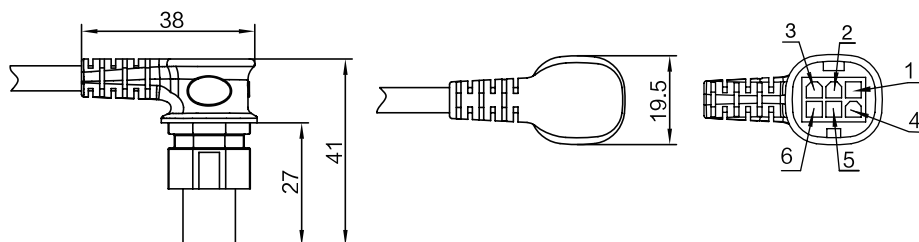


6 Pin Mini-Fit elbow plug

Matching control box :JCB35T2/
JCB35T3/JCB35Q3/JCB35K3



Pin	Color	Function
1	Orange	When not on lower limit, link with red wire
2	Black	When not on upper limit, link with yellow wire
3	Red	When not on lower limit, link with orange wire
4	Brown	When positive voltage power on, actuator will go down
5	Blue	When positive voltage power on, actuator will go up
6	Yellow	When not on upper limit, link with black wire





Strictly abiding by medical safety certifications

Passed EMC tests. To ensure our products pass all kinds of tests domestic or abroad.



Communication protocol development

Aiming at different applications, develop more extensive functions for control system.



Professional customization

Powerful R&D strength, fully satisfy customers' needs. Development cycle is about 10 days, seizing more market opportunities



Intelligent Control of Bluetooth

Mobile phone as the remote, applying in home care. Market pioneer, Jiecang provides better choices



Wireless Communication

Controllers adopt high-frequency wireless system. It can avoid interference mixing with signal receivers, assisting in remote control over medical equipment.



Latest Weighing System

Designed for physiotherapy beds and medical care beds. Cantilever carrying weighing sensor, it is applicable to different bedsteads dispensing with any adjustment



Notes for mounting and usage can be found in the corresponding mounting manual