
Inline lifting column JS36ZC1-2-S



TECHNOLOGY
DRIVES INTELLIGENT LIFE

Data sheet

JS36ZC1-2-S

- JS36ZC1-2-S is a compact 2-part round tube inline column that provides more diverse design for the overall lifting system.
- Without motor housing design, it has a simple appearance, compact structure and a wide range of applications.
- 1500N static self-locking force, to ensure strong static load capacity of complete set of lifting table;
- Excellent comprehensive performance, low noise, high load, high stability.
- Suitable for office, home and business environment.



Features

- Non-porous design of tube
- Max load: 800N
- Max load of TS sets: 1250N
- Static self-locking force of TS: 5000N
- Full load & non load capacity keep the stable speed: 32mm/s
- Low noise level: ≤ 50 dB
- The bending moment: 100N.m
- Standard installation length: 650mm
- Standard stroke length: 500mm
- Size of outer tube: $\phi 70$ mm
- Motor: high-power motor by JIECANG
- Surface: powder coating; Standard colors: white, black, grey

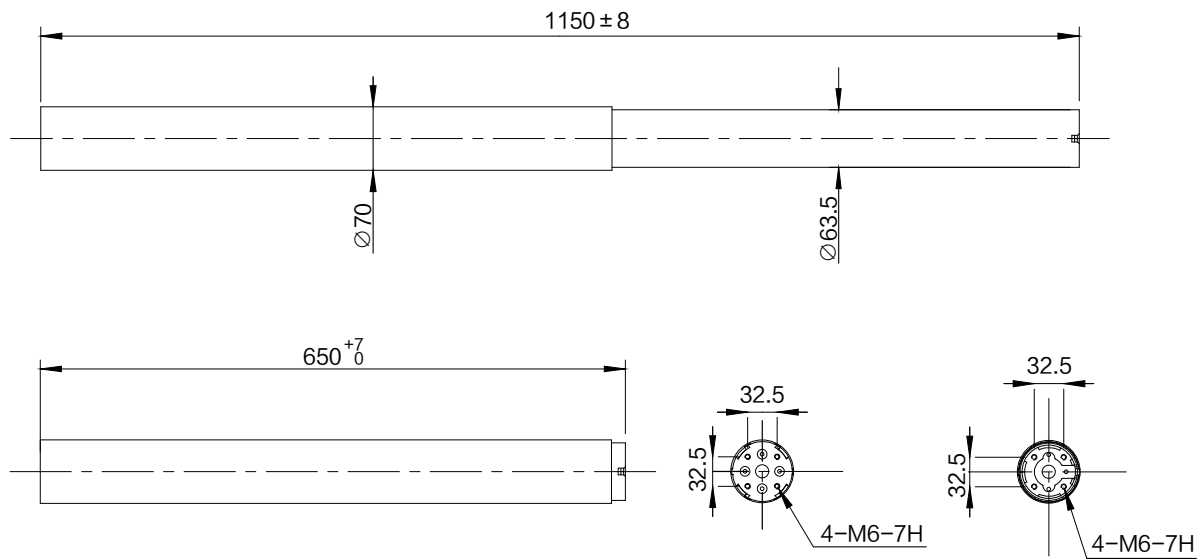
Usages

- Single column lift or two columns, three columns, four columns synchronous lift; Can be used with our TO(single column), TS(double columns), TT(three columns), TF(four columns) standard frames
- Compatible with control box: JCB35NS1; JCB35NH2
- Duty cycle: 10 %, Max. 2 minutes operation/Min. 18minutes rest of continuous use at full load
- Working environment: Indoor
- Storage and transport temperature: -10°C ~ 70°C

Technical specifications

Model	Load (N)	Self-lock (N)	Rated load current (A)	Maximum speed no load ~ rated load (mm/s)	Duty cycle	Stroke (mm)	Min. height (mm)
JS36ZC1-2-S	800	1500	6	32	10%	500	650

Dimensions



Ordering Key

