
JCB36M Control Box



Data sheet

JCB36M Control Box

- JCB36M control box powered by li-ion battery(DC power), is a good choice for office application.
- Compatible to adapters with different power and can satisfy different needs.
- JCB36M has features of small volume and light weight.
- Retreat in case of resistance function (stable start and stop).



Features

- Column outputs: 1-2
- Color: Black
- House: ABS with screw holes
- Installing way: can be fixed on the table plate or on the frame
- White plug, easy to recognize
- Power cord is plugable and length is optional
- Overload protection: set the limit value to avoid over burden motion

Option

- New and more sensitive sensors for retreat in case of resistance
- 2.4G wireless receiver box
- Bluetooth receiver box
- Lithium Battery
- Power Adapter

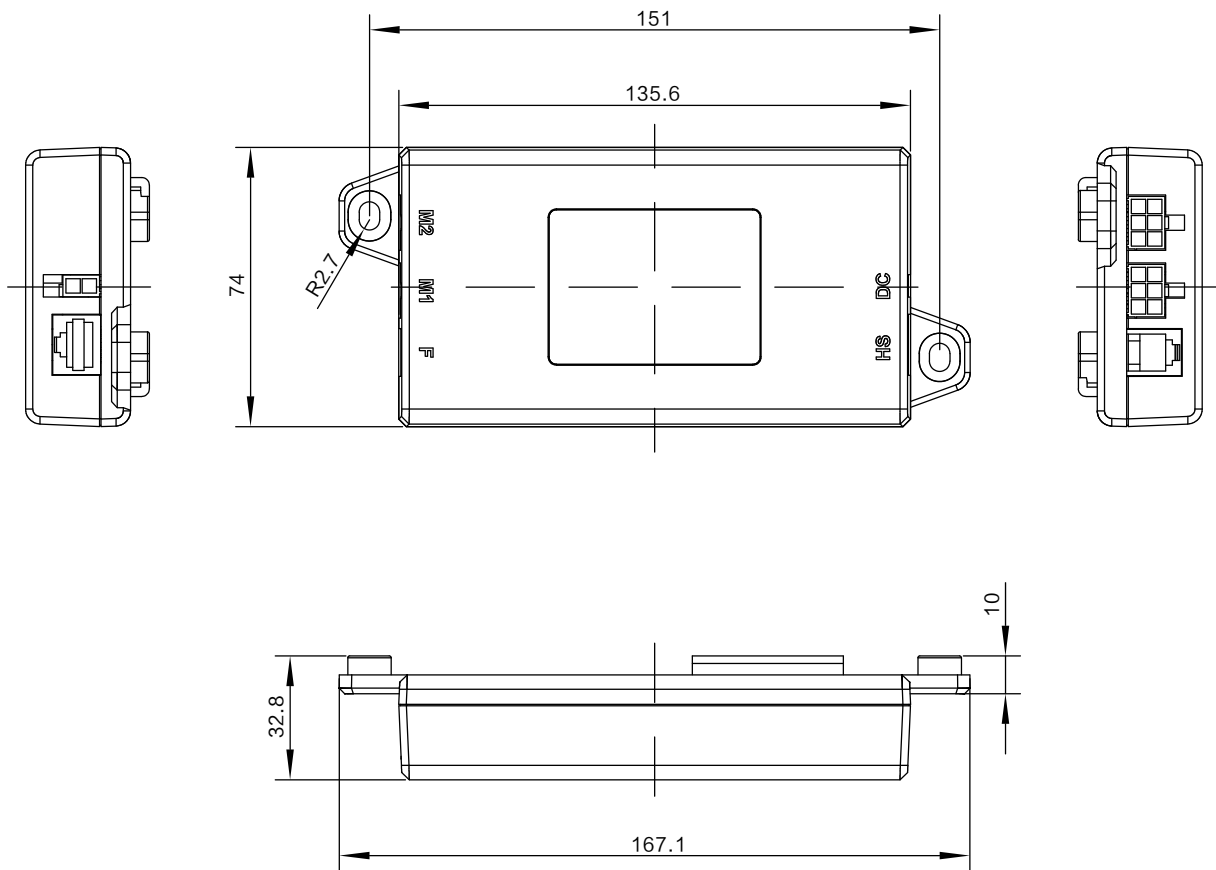
Usages

- Duty cycle: S2-20 min. Continuous work for most 2 minutes in a period of 20 minutes
- Ambient surrounding: Indoor

Technical specifications

- size: 167x74x33
- weight: 0.2Kg
- input power: 18V-33V
- output power: 24V/6A
- Low standby power consumption: 0.1W

Dimensions



Ordering Key

JCB36M - 2E7-0- M2-3D0 - 500 (495) 650 (710)

