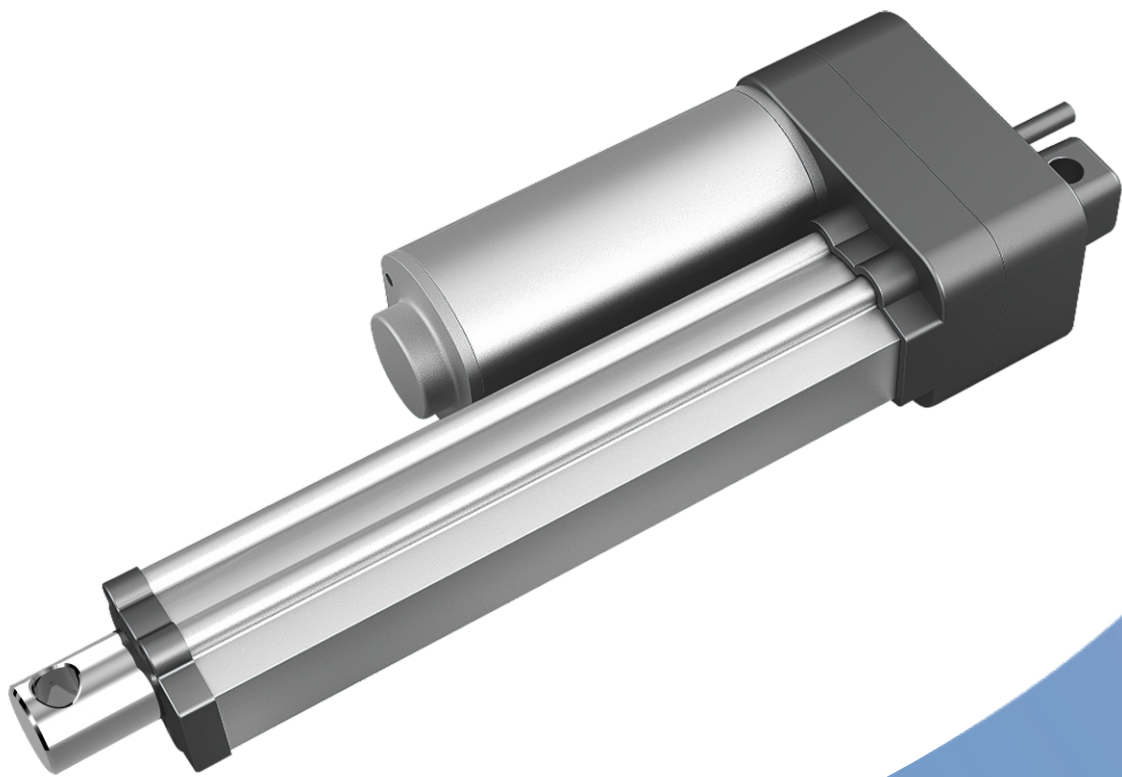


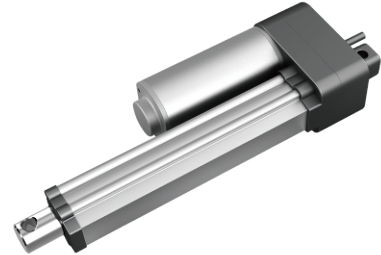
# Linear Actuator JC35W5



## Data sheet

# Linear Actuator JC35W5

JC35W5 can be mainly applied in conditions of 3000N(24V) and 2000N(12V), is a good choice for medical or industrial field. JC35W5 has superiority of high IP rating, fast speed and small current.



---

## Features

- Motor voltage:12V/24V
- Load thrust and pull up to 3000N
- Color:Black
- IP Grade:IP67
- Noise level $\leq$ 55dB
- With electrical limit switch
- Stroke length: 50–300mm

## Options

- Hall sensor

## Usage

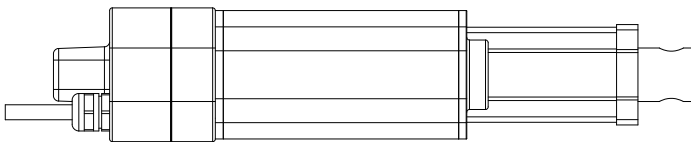
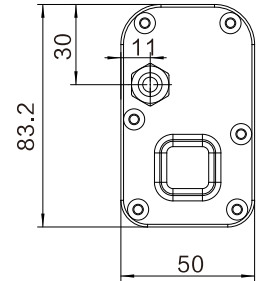
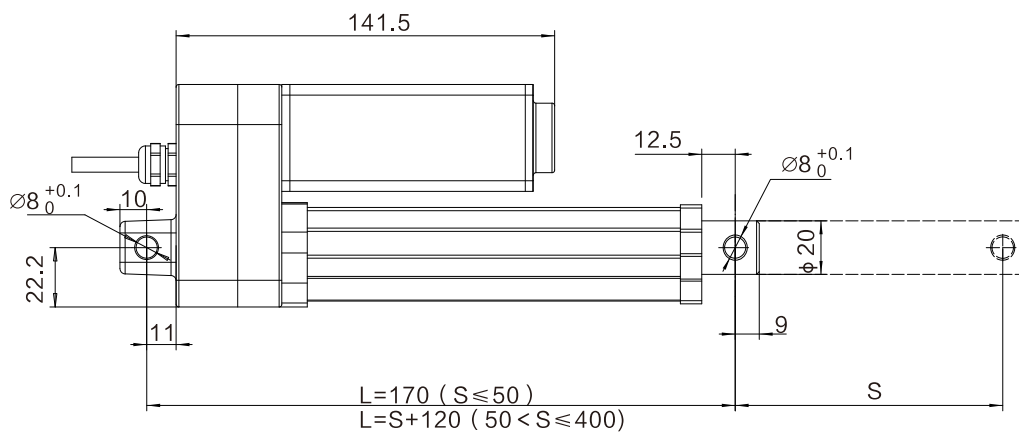
- Compatible with: control box JCB35Q, JCB35N2
- Duty cycle:10%, continuous work for most 2 minutes with a pause of 18 minutes
- Using temperature : -30°C~50°C

## Technical specifications

Power Supply (VDC)	Spindle Pitch (mm)	Max. Load Push (N)	Self-Lock Load (N)	Speed at Without Load/Full Load (mm/s)	Current at Full Load (A)
12	4	2000	2000	6/4	5
24	4	3000	3000	8/5.5	4.2
24	7.5	2000	2000	14.2/8.4	4
24	10	1000	1000	18.9/14.6	3.2

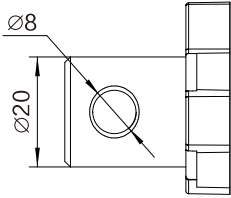
- When the actuators are not running, Jiechang's control boxes could short-circuit the motor terminals (electrodes). Such solutions give actuators higher self-locking load.
- These data above are typical ones.

## Dimensions with standard top clevis



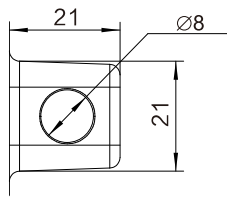
## Top clevis

Top clevis, no slot,  $\varnothing 8$

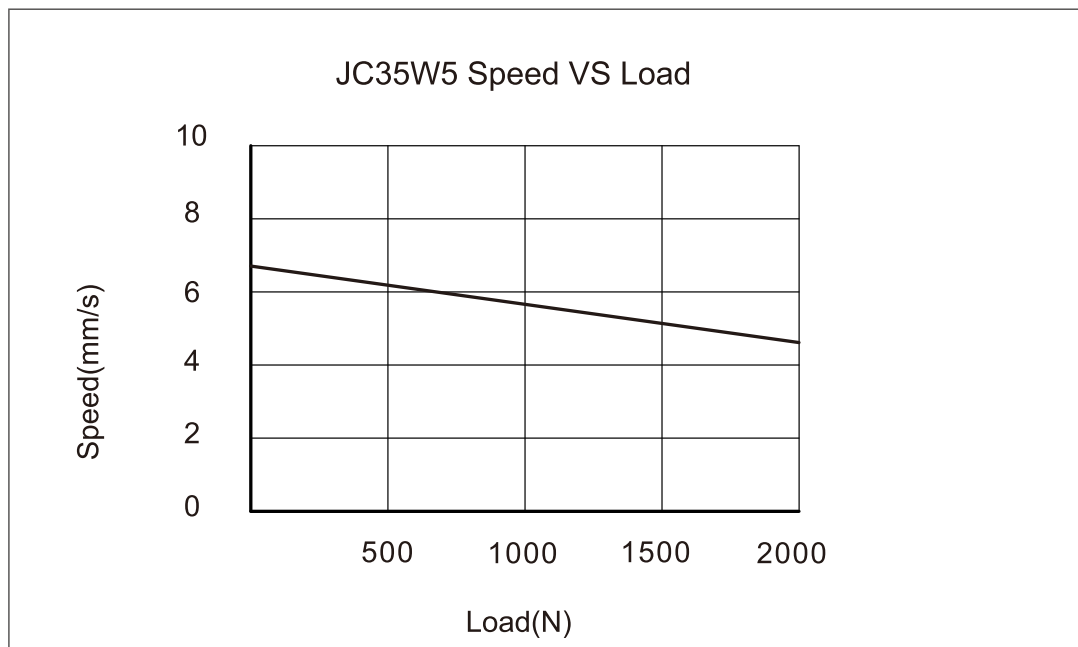
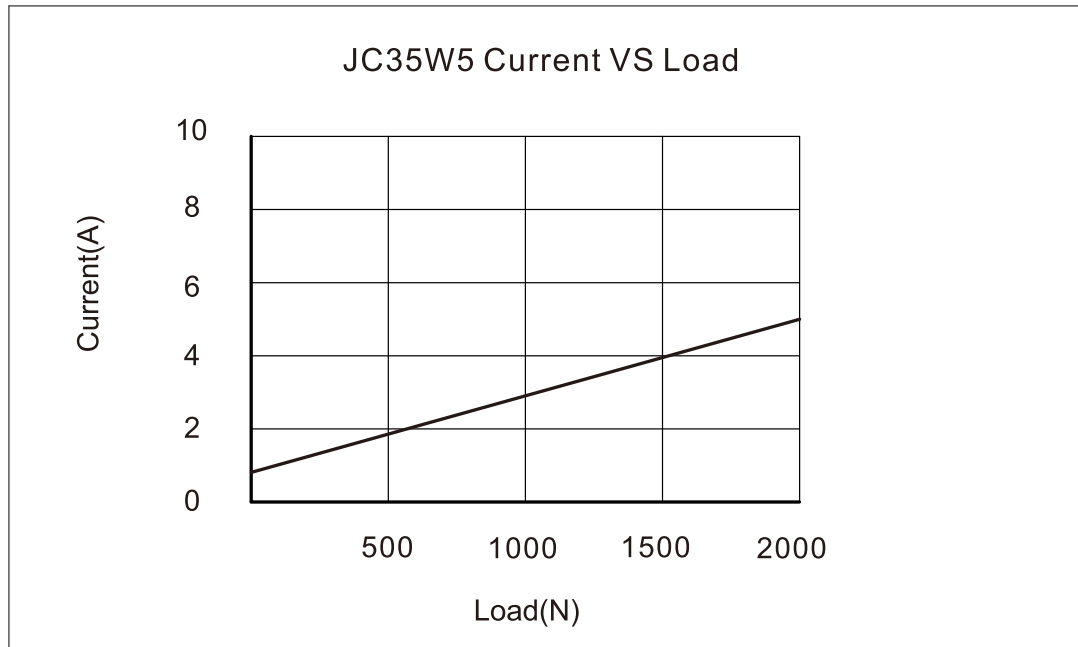


## End clevis

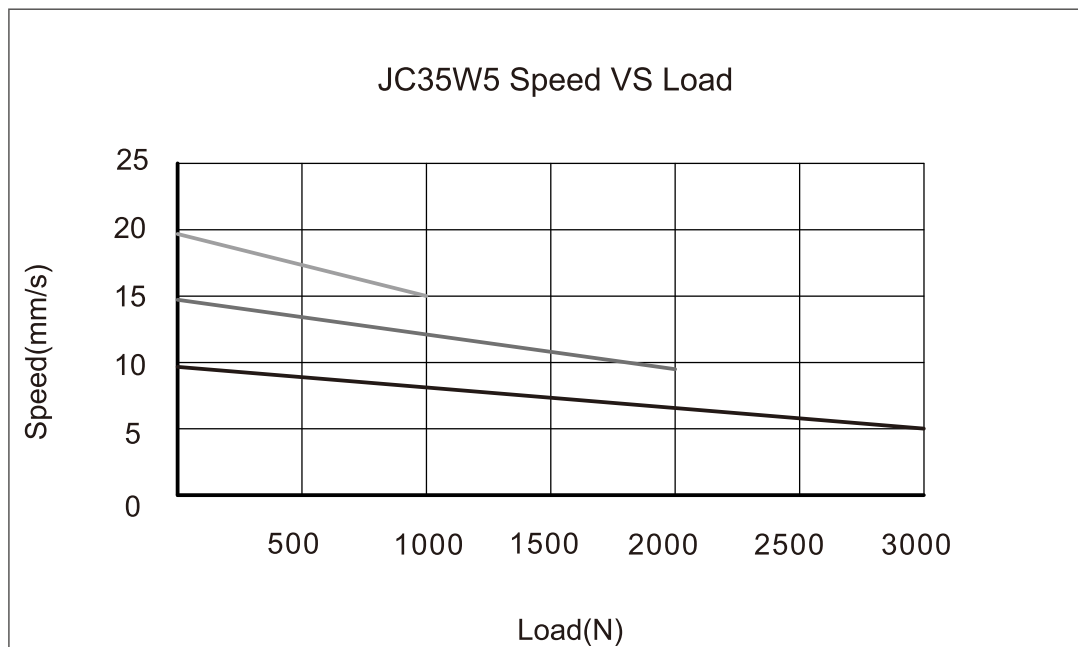
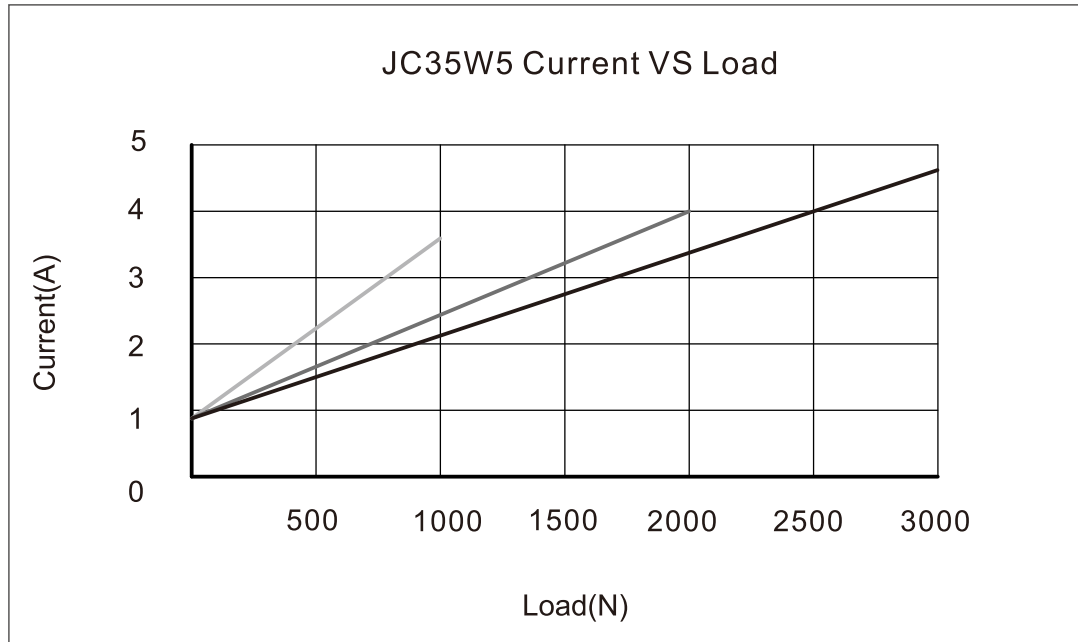
End clevis, no slot,  $\varnothing 8$



## Performance data (12 VDC)



## Performance data (24VDC)



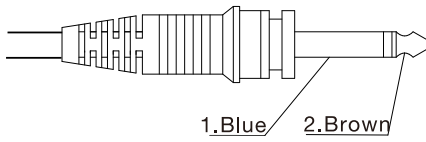
## Wire Definitions

	blue/red	brown/white	yellow	black	red	orange
1	motor -	Motor +	N/A	N/A	N/A	N/A
2	motor -	Motor +	N/A	N/A	N/A	N/A
3	motor -	Motor +	N/A	N/A	N/A	N/A
4	motor -	Motor +	hall 1	Ground	5 VDC input	hall 2
5	motor -	Motor +	hall 1	Ground	5 VDC input	hall 2



## Optional plug

microphone

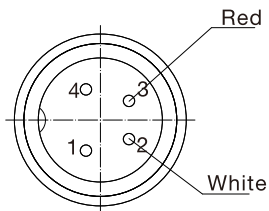
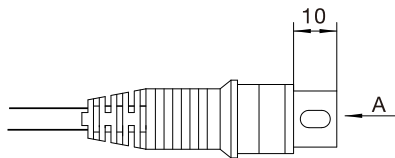


Wiring method  
1—Blue  
2—Brown

2 core without insert

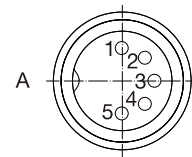
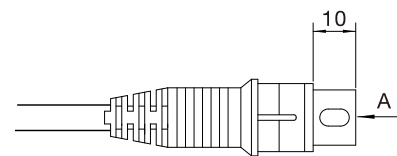


4 core straight insert 2 core wire

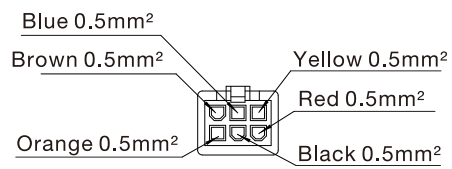
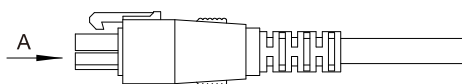


A

5 core straight insert 6 core wire



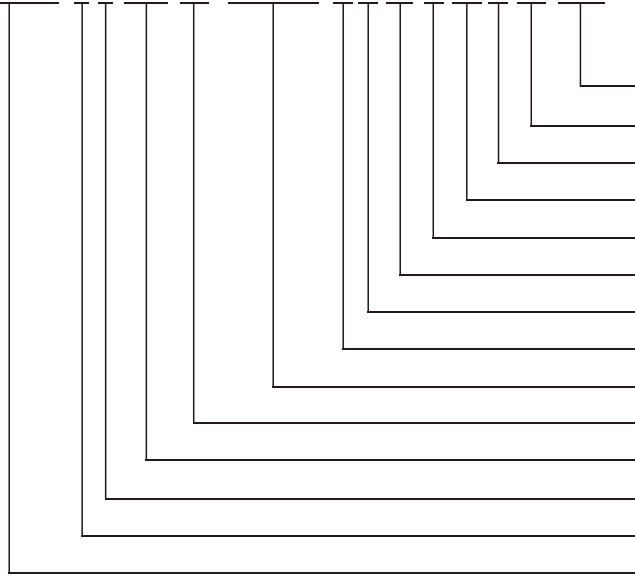
6 core ET straight insert



A

## Ordering Key

JC35W5 0 3 5D5 24 200/320 V B 37 L 71 0 02 1D5



Cable length	1D5=1.5m
Plug and cable	02=4 core straight insert 2 core wire
Brake	0=no 2=right 1=left
Top clevis	71=W type, aperture 8.0
End clevis material	L=Aluminum alloy
End clevis	37=W type, aperture 8.0
Color	B=Black
Mounting position	H=horizontal V=vertical
Stroke/Retracted length	
Input voltage	24=24V
Speed at full load	5D5=5.5mm/s
Load capacity	3=3000
Optional feature	Y=Hall sensor
Type	