

Linear Actuator JC35N1



Data sheet

Linear Actuator JC35N1

Features

- 12V safety voltage
- Thrust up to 100 N in push and up to 50 N in pull
- Color: black
- Standard protection class: IP54
- Aluminium-Alloy outer tube and inner tube, beautiful and corrosion resistant
- The average noise level is lower than 50dB (ambient noise is less than 60dB).
- High-strength front and back fixtures
- Certificate : CE



Options

/

Usage

- Max 10% or 2 minutes continues use followed by 18 minutes not in use
- Ambient temperature: +5 ° to +40 °
- Matching control box: JCB35E, JCB35Q, JCB35T, JCB35R

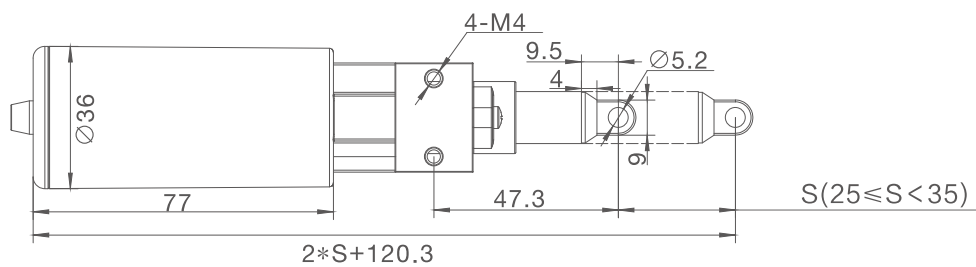
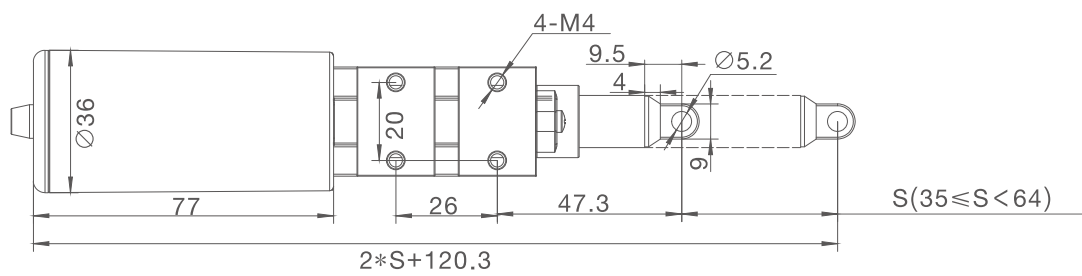
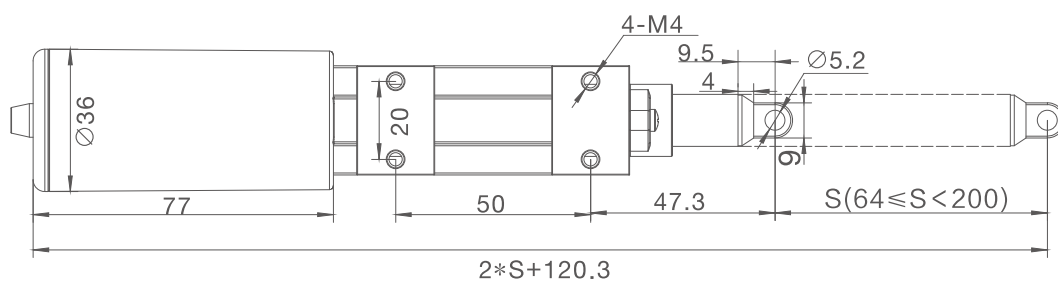
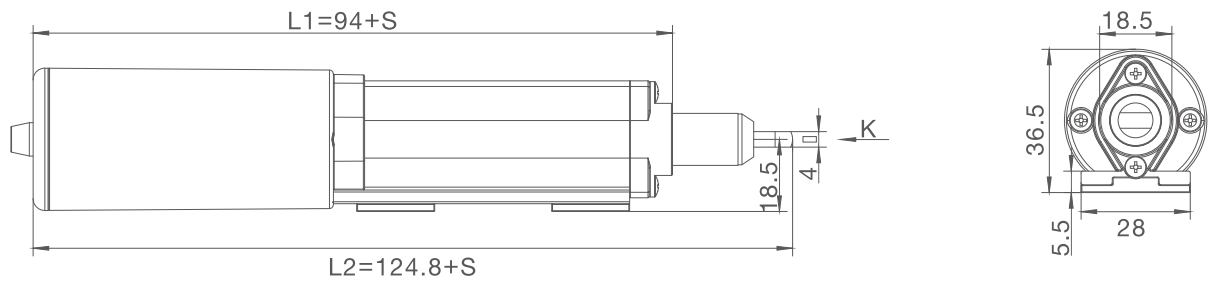
Technical specifications

Spindle pitch (mm)	Max. load push (N)	Max. load pull (N)	Self-lock (N)	Typical speed Unloaded (mm/s)	Typical speed full load (mm/s)	Typical Amp full load (A)
/	100	50	50	10	7	0.2

Comments to table

- The above measures are made in connection with 12V DC stabilized voltage supply.
- JIECANG control boxes are designed so that they will short-circuit the motor terminals (poles) of the actuator(s) when the actuator(s) are not running. This solution gives the actuator(s) a higher self-locking ability. If the actuator(s) are not connected to a JIECANG control box, the terminals of the motor must be short-circuited to achieve the self-locking ability of the actuator.

Dimension



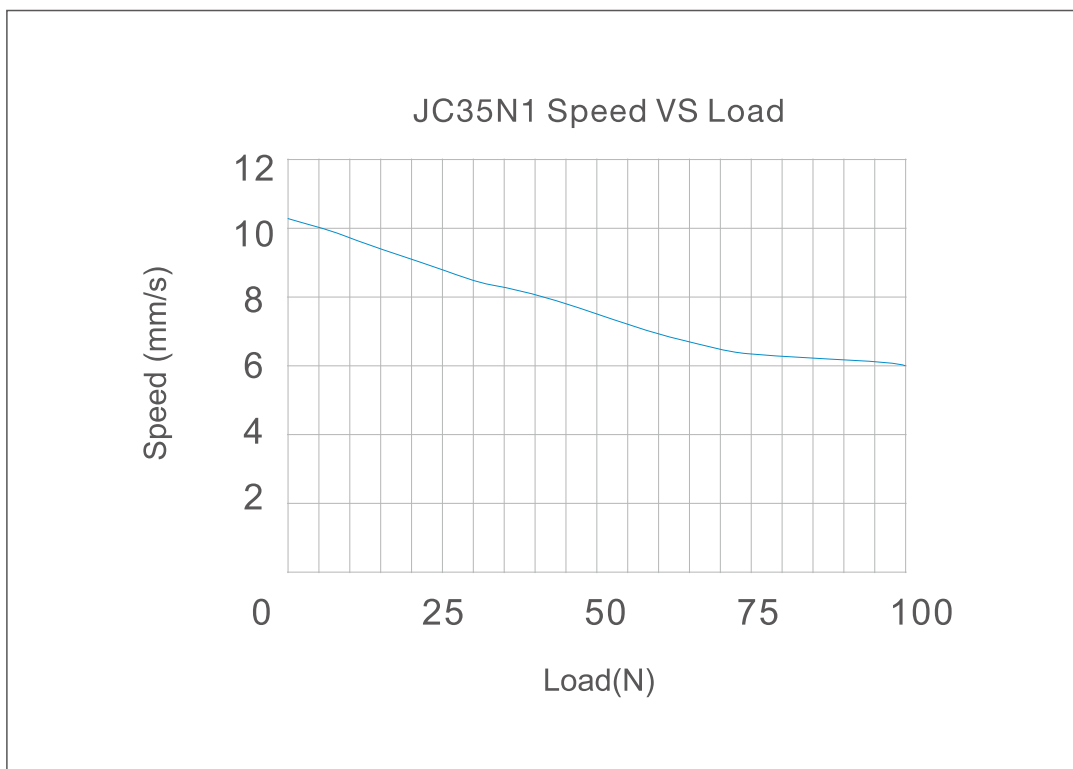
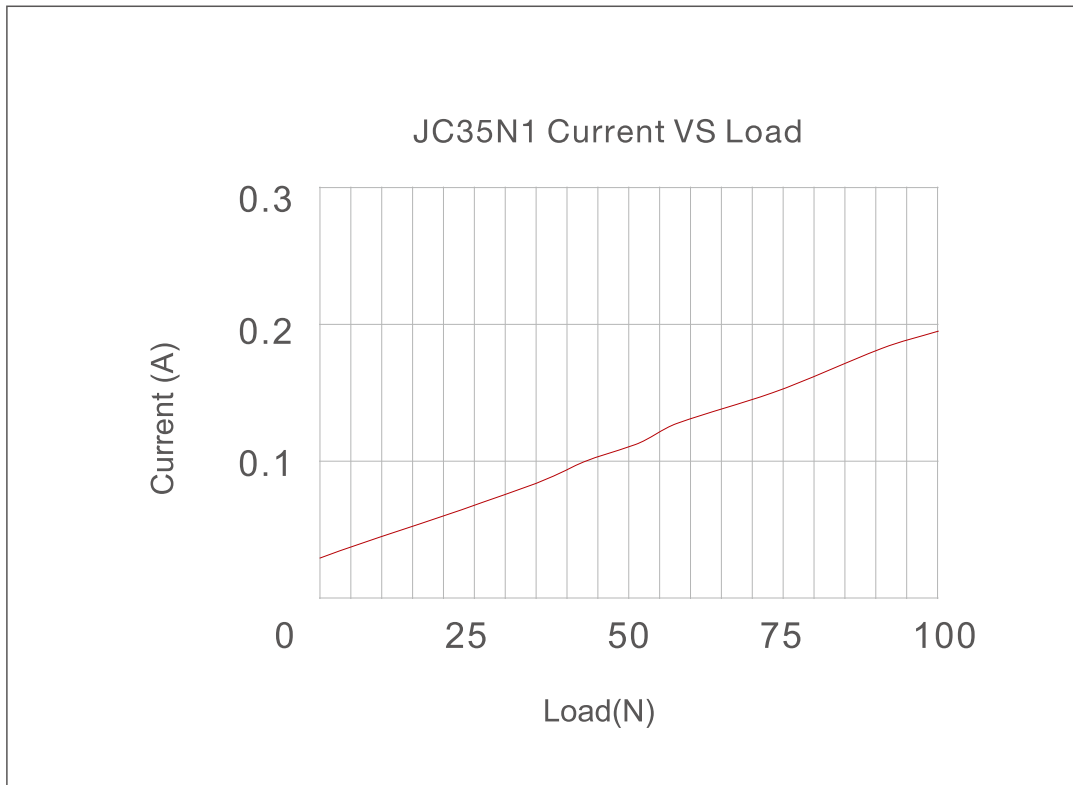
Installation dimensions

$L1=S+94$, $L2=124.8+S$ ($64 \leq S \leq 200$)

$L=S+$ ($35 \leq S < 64$)

$L=S+$ ($25 \leq S < 35$)

Performance Data (12V)



Ordering Key

JC35N1 0 0D1 7 12 100/47 H B 0 0 70 0 14 0D3

