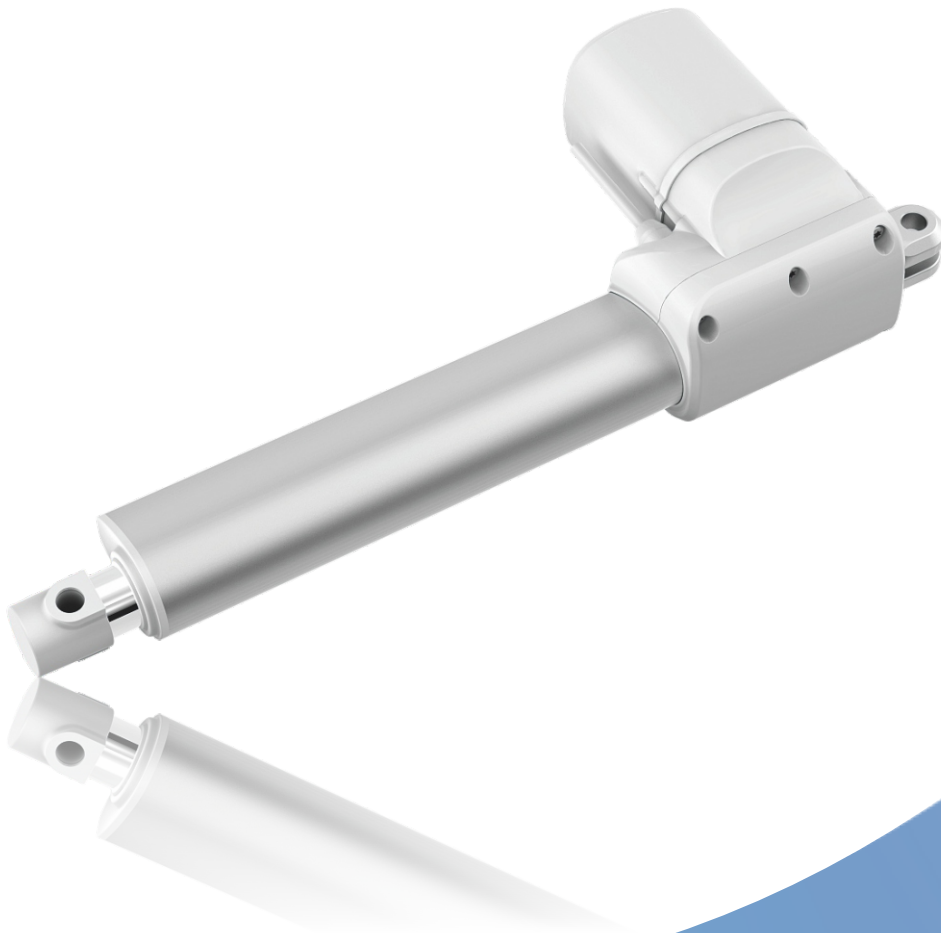


# Linear Actuator JC35L9



## Data sheet

# Linear Actuator JC35L9

JC35L9 is a brand new actuator of L series. It is mainly designed for medical bed system to control bed status. It has a low noise but could thrust up to 6000N. Faster speed at full load, reaching 4mm/s. Equipped with safety nut, JC35L9 is a safety choice. With a smooth and concise appearance, JC35L9 provides medical bed system with better solutions.



---

## Features

- Load thrust up to 6000N
- Max. load pull 4000N
- 24V DC permanent magnet motor
- IP Grade:Max.IPX6
- color: Black/Grey
- Noise level $\leq$ 48dB (ambient level $\leq$ 40dB)
- Electrical limit switches : built-in
- Safety Nut
- Short stroke length:
  - 6000N:50-250mm( $\pm$ 4mm)
  - 4000N:50-500mm( $\pm$ 4mm)
- plug-in mounting with JCB35Q,JCB35T
- Certificated by: CE,UL

## Options

- Hall Sensor
- Only Push
- Reed switch option

## Usage

- Matching control box: JCB35E,JCB35Q,JCB35T,JCB35R
- Duty cycle: 10%, continuous work for most 2 minutes
- with a pause of 18 minutes
- Using temperature: 0 to +50 °C
- Storage temperature: -10-50°C

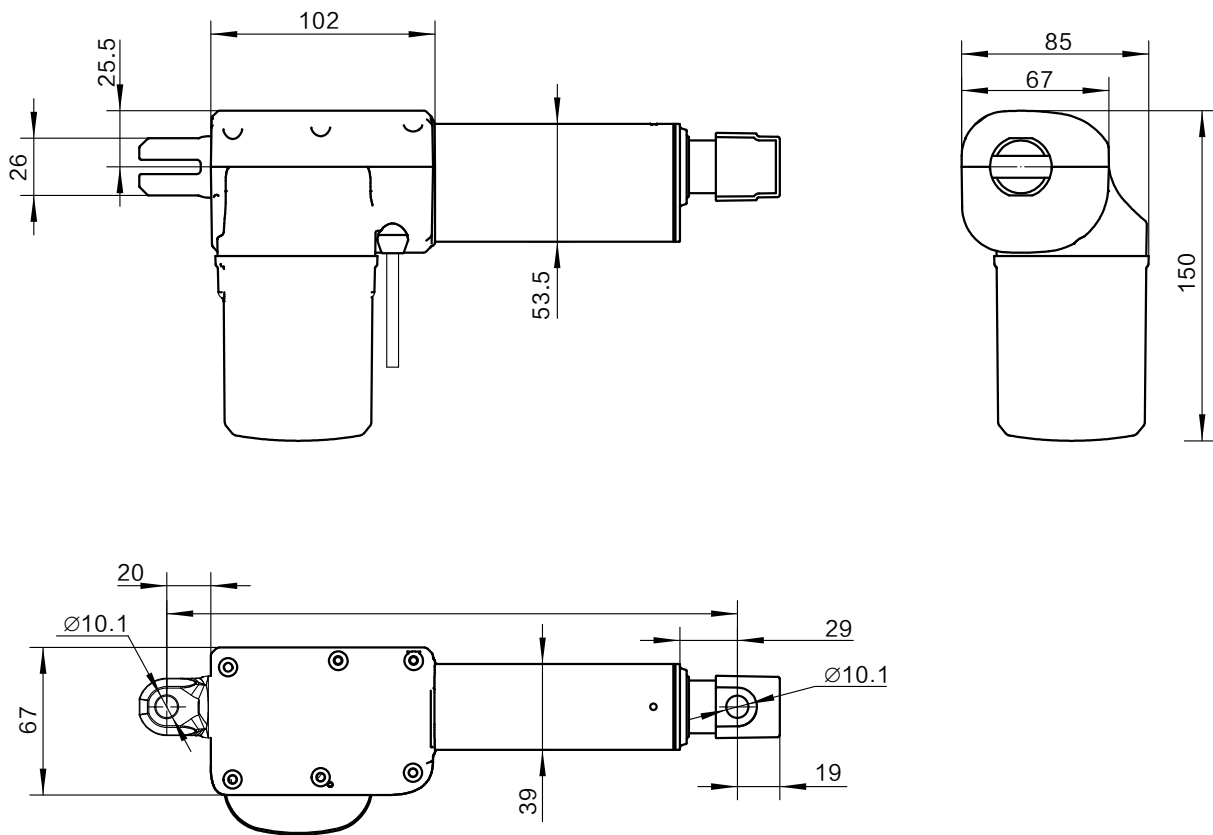
## Technical specifications

Spindle pitch (mm)	Max. load push (N)	Max. load pull (N)	Self-lock (N)	Typical speed Unloaded (mm/s)	Typical speed full load (mm/s)	Typical Amp full load (A)
4	6000	4000	6000	5.7	3.9	4.5
5	4000	4000	4000	6.8	5.9	4.3

### Comments to table

- The above measures are made in connection with 24V DC stabilized voltage supply.
- When the actuators are not running, Jiecang's control boxes could short-circuit the motor terminals (electrodes). Such solutions give actuators higher self-locking load.

## Dimension(standard)



## Installation dimensions

Retracted Length:

6000N

$$L=225(S \leq 50)$$

$$L=S+175(50 < S \leq 200)$$

$$L=S+185(200 < S \leq 300)$$

4000N

$$L=225(S \leq 50)$$

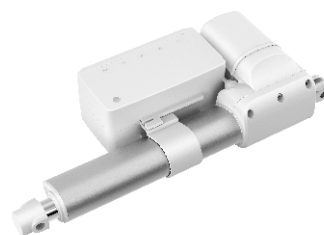
$$L=S+175(50 < S \leq 200)$$

$$L=S+185(200 < S \leq 300)$$

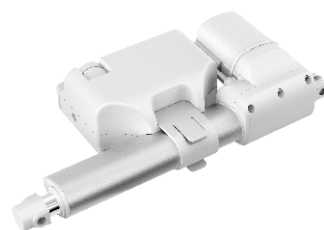
$$L=S+195(300 < S \leq 400)$$

$$L=S+205(400 < S \leq 500)$$

## Plug-in mounting with JCB35Q,JCB35T

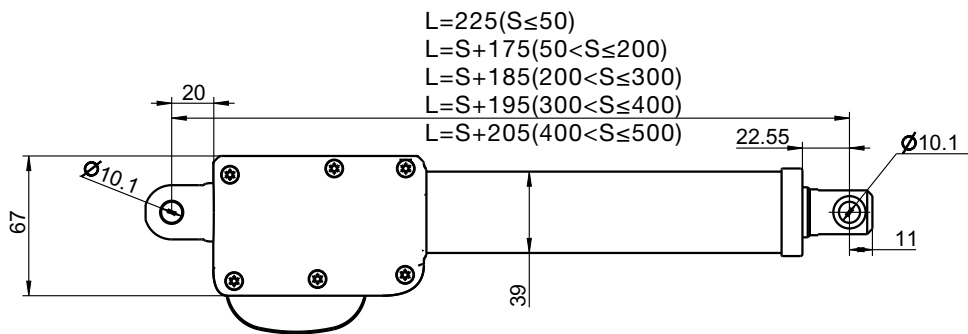
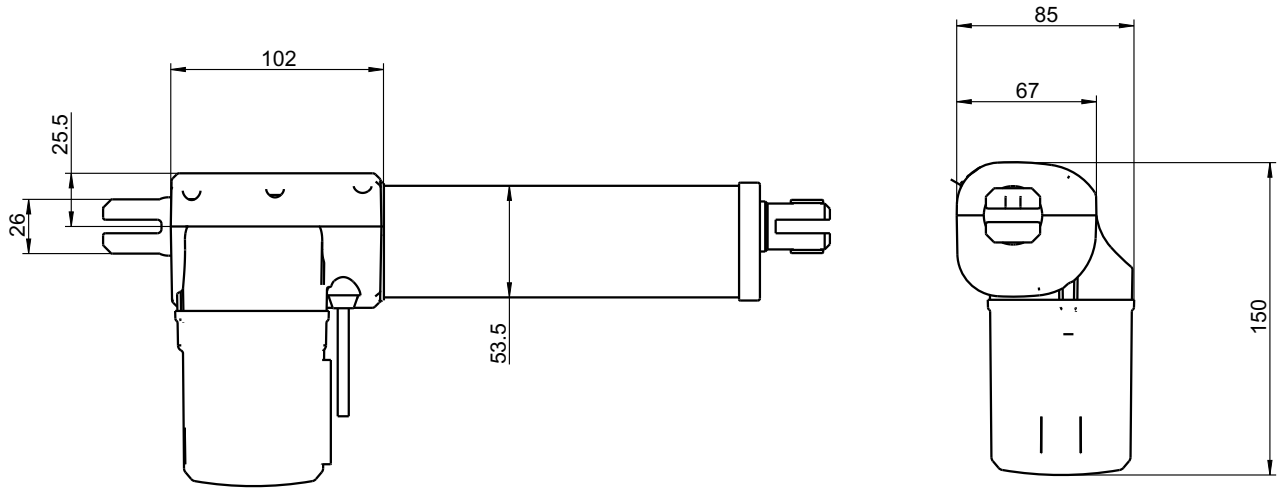


JCB35Q

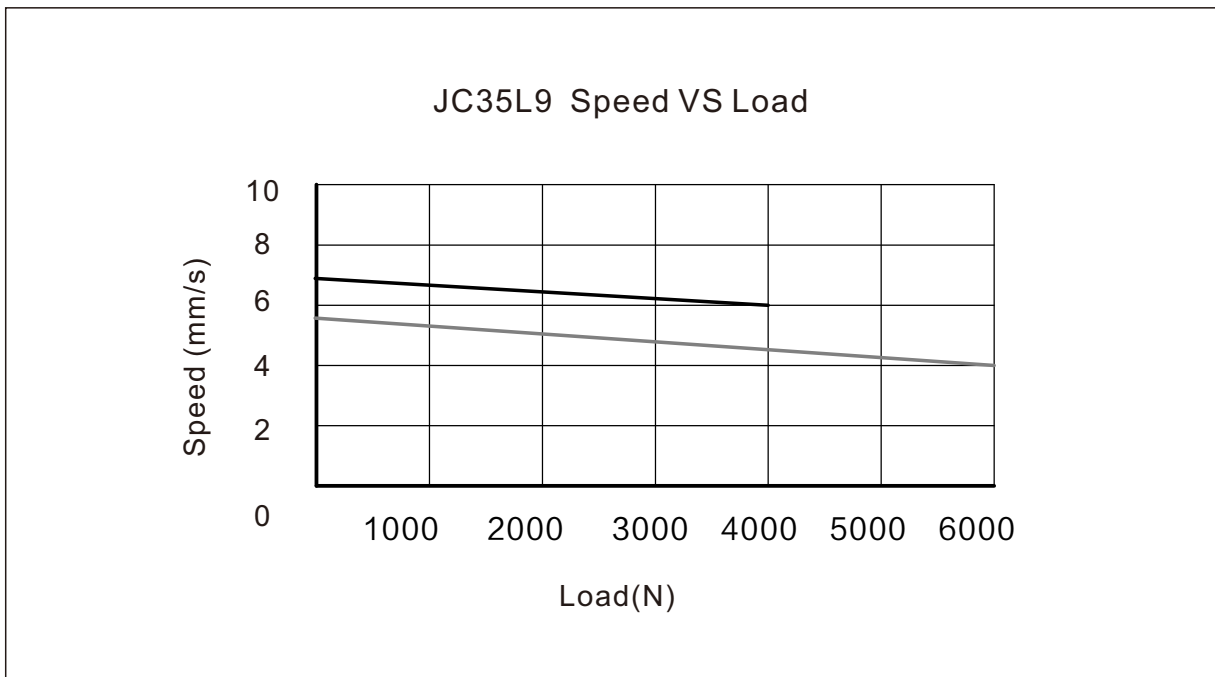
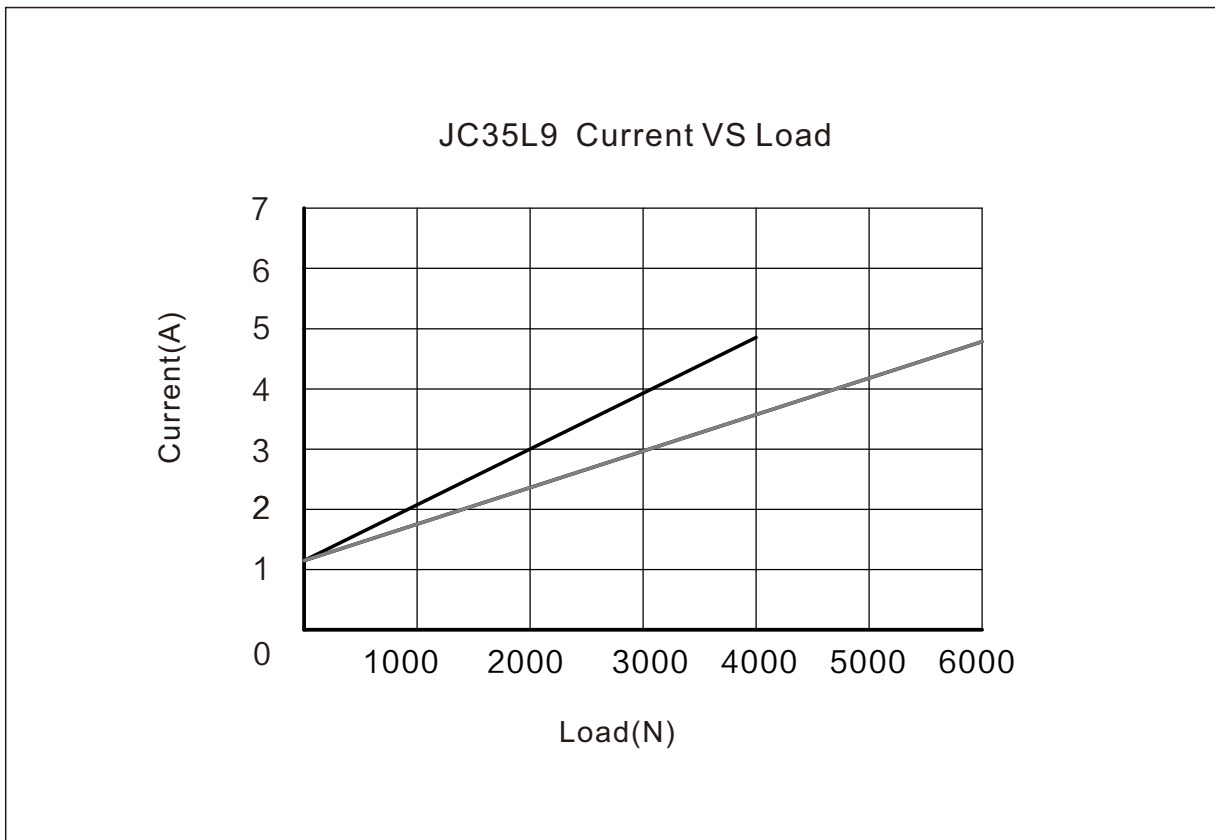


JCB35T

## Dimension (IPX6)

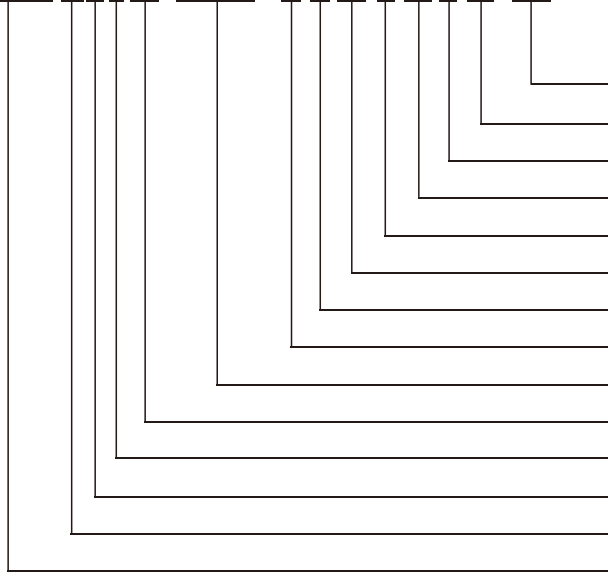


## Performance Data (24V DC)



## Ordering Key Example

JC35L9 0 6 4 24 100/275 H G 02 G 09 2 02 1D5



Cable length	1D5=1.5m
Plug and cable	
Brake	1=left 2=right
Top clevis	
End clevis material	G=Cast steel body
End clevis	02=slot width 10, slot depth 32, hole 10.1
Color	G=Grey
Mounting position	H=horizontal V=vertical
Stroke/Retracted length	
Input voltage	24V
Speed at full load	4mm/s
Load capacity	6000N
Optional feature	0 Standard
Type	Y Hall sensor option P Anti-pitch option R Reed switch option