

# JC35L35 Linear Actuator

1. JC35L35 is a quick release actuator with low noise and high speed. The JC35L35 is characterized by low noise, short installation moment, and the highest IP grade can reach IPX6.
2. Suitable for medical beds, nursing beds and other medical equipment.



## Features And Options

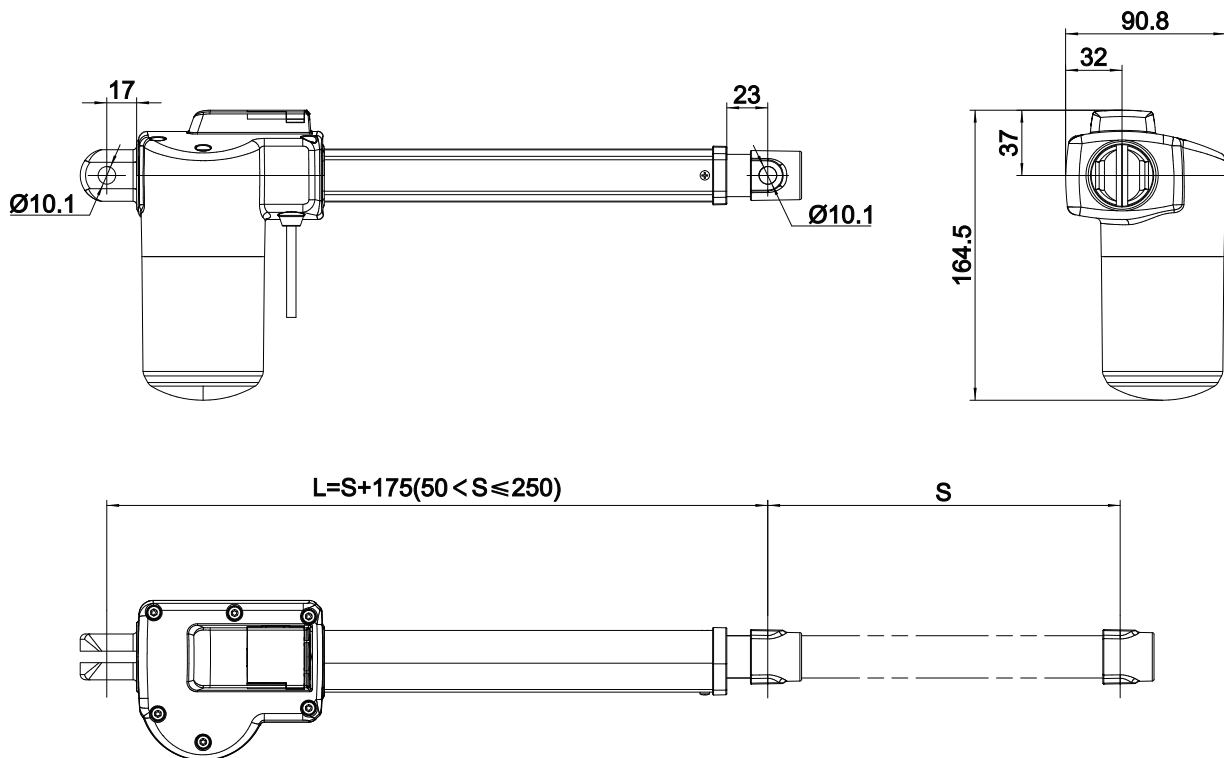
<b>Dynamic load push(N):</b>	3500
<b>Dynamic load pull (N):</b>	0
<b>Min. release force:</b>	≤ 300N
<b>Colour:</b>	Grey
<b>IP Grade:</b>	Max. IPX6
<b>Stroke Length:</b>	50-250mm(in steps of 4mm)
<b>Installation Dimensions:</b>	L=S+175 (50 < S ≤ 250)
<b>Noise Level:</b>	≤ 46dB(environmental noise ≤ 40dB)
<b>Optional:</b>	Safety nut, Hall sensor, Only push no pull
<b>Limit Switch:</b>	Built-in (electrical)
<b>Weight:</b>	About 2kg (different stroke length and installation dimensions with different weight )
<b>Static bending moment:</b>	Lateral load is not allowed
<b>Approval:</b>	IEC60601-1: 2012 EN 60601-1: 2006+A12: 2014 ANSI/AAMI ES60601-1: 2005/(R)2012 and A1: 2012, C1: 2009/(R)2012 and A2: 2010/(R)2012

## Usage

<b>Duty Cycle:</b>	10%, max. 2min.continuous working and 18 min.off
<b>Operating Temperature:</b>	+5°C to +40°C
<b>Reserve Temperature:</b>	-10°C to +50°C
<b>Supporting Control Box:</b>	match with JIECANG control box
<b>Relative Humidity:</b>	20% to 90% at 30°C, non-condensing
<b>Atmospheric Pressure:</b>	700 to 1060hPa

## Dimension Drawing

Top clevis F09, aperture 10.1, end clevis B10

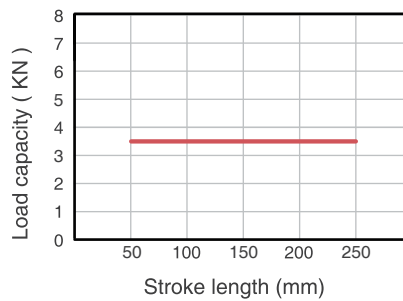


## Technical Data-Standard value

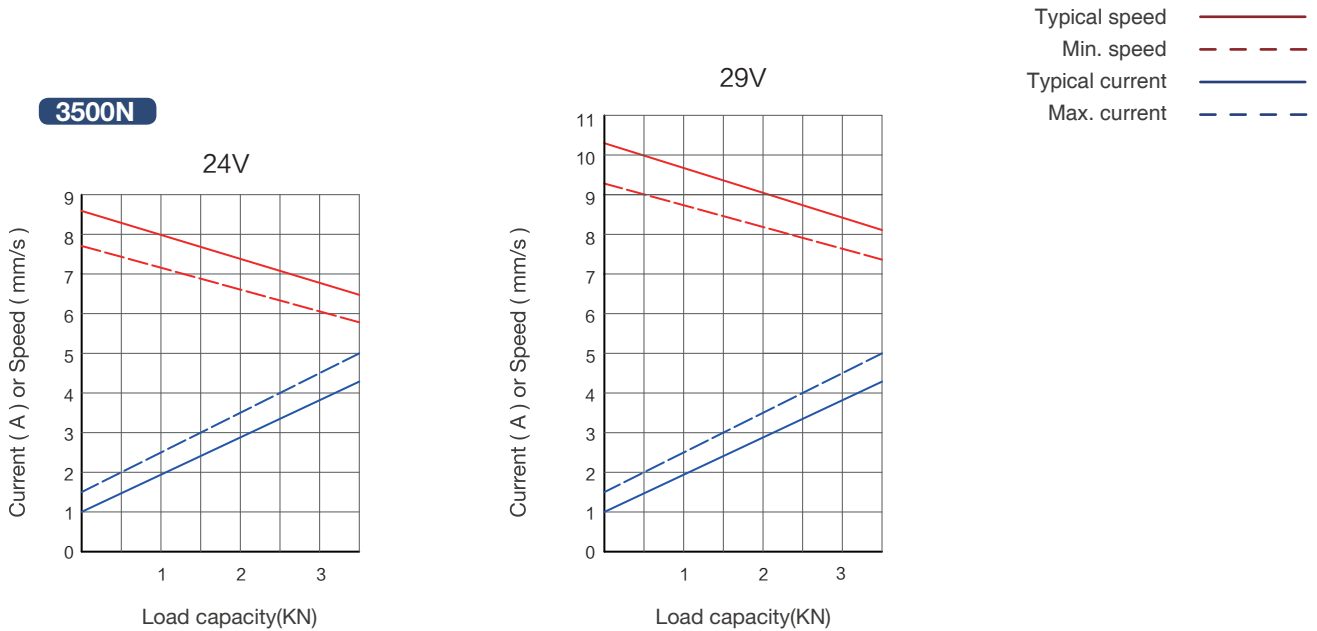
Input voltage (VDC)	Spindle pitch (mm)	Max. load in push (N)	Max. load in pull (N)	Mechanical self-lock (N)	Min. release force (N)	Speed at no load/full load (mm/s)	Current at full load (A)
24	6	3500	/	3500	≤300	8.3/6.5	≤5.0
29	6	3500	/	3500	≤300	10.3/8.2	≤5.0

Remarks: It can achieve better self-locking ability with Jiecang control box;  
 The above data is the standard value of the test data (inspection specification) at room temperature of 25°C.

## Diagram of relationship between stroke length and load



## Characteristic Curve



## Ordering Example

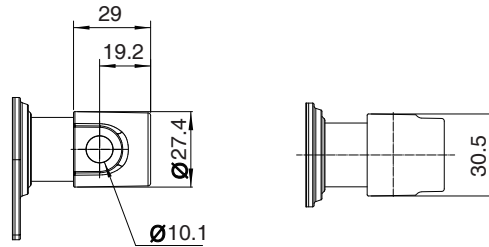
Take **JC35L3503D56D524200/375HGB10SF090021D5** for example

Model	<b>JC35L35</b>	
Optional features	<b>X</b>	0=Quick release (standard) P=Only push no pull+quick release (standard) S=safety nut+quick release (standard) Y=Hall sensor+quick release (standard) PS=Only push no pull+safety nut+quick release (standard) PY=Only push no pull+Hall sensor+Quick release (standard) SY=Hall sensor+safety nut+quick release (standard) N=Only push no pull+safety nut+Hall sensor+quick release (standard)
Load in push	<b>X</b>	3D5=3500N
Speed at full load	<b>X</b>	6D5=6.5mm/s
Input voltage	<b>XX</b>	24=24VDC / 29=29VDC
Stroke length/ Installation dimension	<b>XXX/XXX</b>	Stroke length = XXX Retracted length = XXX
Clevis directions	<b>X</b>	H = H direction / V=V direction
Color	<b>X</b>	G=Gray / B=Black
End clevis specification	<b>XX</b>	B10; slot 6.5, depth 32, hole 10.1
End clevis material	<b>X</b>	S= Plastic end clevis
Top clevis specification	<b>XX</b>	F09: the hole on inner tube is 14.2, the distance between the hole and the end face is 17; add D inner tube top clevis bushing, aperture 10.1; add D inner tube top clevis sleeve (gray)
Brake specification	<b>X</b>	0=Standard
Type of plug and cable	<b>XX</b>	02=4-pin DIN plug 10=5-pin DIN plug
Cable length	<b>XXX</b>	0D5=0.5m 1D5=1.5m 2D0=2.0m

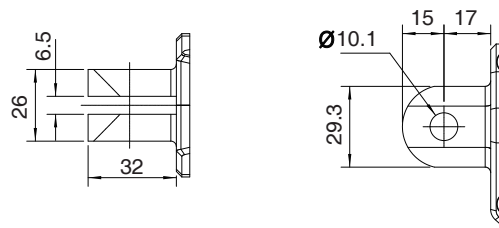
## Ordering Details

### Dimension drawing of clevis

#### Top clevis F09



#### End clevis B10

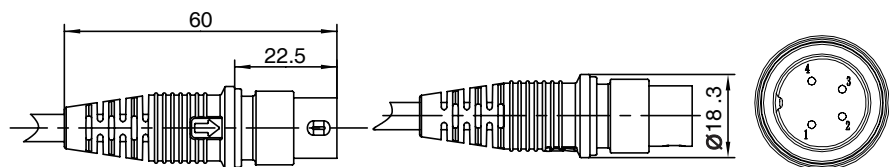


### Motor wire

#### 4-pin DIN plug (standard)

Supporting control boxes:  
JCB35Q / JCB35T / JCB35R /  
JCB35R1 / JCB35S

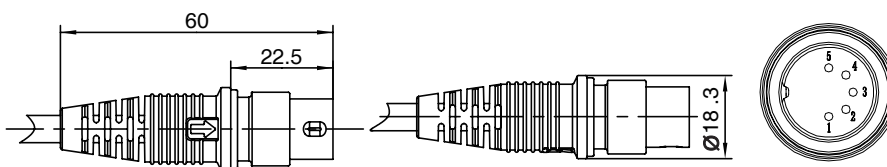
Pin	Color	Functions
1	NC	Not connected
2	Brown	power with positive voltage, actuator going down
3	Blue	power with positive voltage, actuator going up
4	NC	Not connected
Outer Circle	NC	Not connected



### 5 pin DIN plug (actuators with Hall sensor)

Supporting control boxes:  
JCB35Q / JCB35T / JCB353R /  
JCB35R1 / JCB35S

Pin	Color	Functions
1	Red	5V
2	Brown	power with positive voltage, actuator going down
3	Black	GND
4	Blue	power with positive voltage, actuator going up
5	Yellow	Hall sensor signal 1
Outer Circle	Orange	Hall sensor signal 2





### Strictly abiding by medical safety certifications

Passed EMC tests. To ensure our products pass all kinds of tests domestic or abroad.



### Communication protocol development

Aiming at different applications, develop more extensive functions for control system.



### Professional customization

Powerful R&D strength, fully satisfy customers' needs. Development cycle is about 10 days, seizing more market opportunities



### Intelligent Control of Bluetooth

Mobile phone as the remote, applying in home care. Market pioneer, Jiecang provides better choices



### Wireless Communication

Controllers adopt high-frequency wireless system. It can avoid interference mixing with signal receivers, assisting in remote control over medical equipment.



### Latest Weighing System

Designed for physiotherapy beds and medical care beds. Cantilever carrying weighing sensor, it is applicable to different bedsteads dispensing with any adjustment

### Disclaimer and Exclusion of Liability

The user must determine the suitability of JIECANG products under specific conditions. JIECANG is committed to providing the latest product information. However, as JIECANG' s product are constantly improving, it is possible to make changes to JIECANG' s product without prior notice. Therefore, JIECANG cannot guarantee the correctness and authenticity of the product information. Although JIECANG will do its best to meet the order requirements, due to the above reasons, JIECANG cannot guarantee the delivery capacity of any specific product.

Therefore, JIECANG reserves the right to stop selling any products listed on the website or product catalog or other JIECANG written materials. All sales activities must be carried out in accordance with the requirements of JIECANG sales and Delivery Standard Clauses. For copies of relevant documents, please contact JIECANG.



Notes for mounting and usage can be found in the corresponding mounting manual