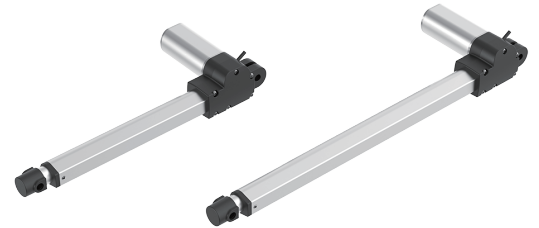


JC35L31 Linear Actuator

1. JC35L31 is a compact high-load actuator.
 2. This type of actuator is mainly used to develop ultra-thin zero-back bed type, storage bed, bed type with vertical lifting waist support function, and electric sofa chair. At present, the development of such bed type and sofa chair is a major trend. The development of miniaturized actuator is more conducive to the design of various bed types and sofa chairs, and more suitable for the market demand of electric bed and sofa chair for home use.



Features And Options

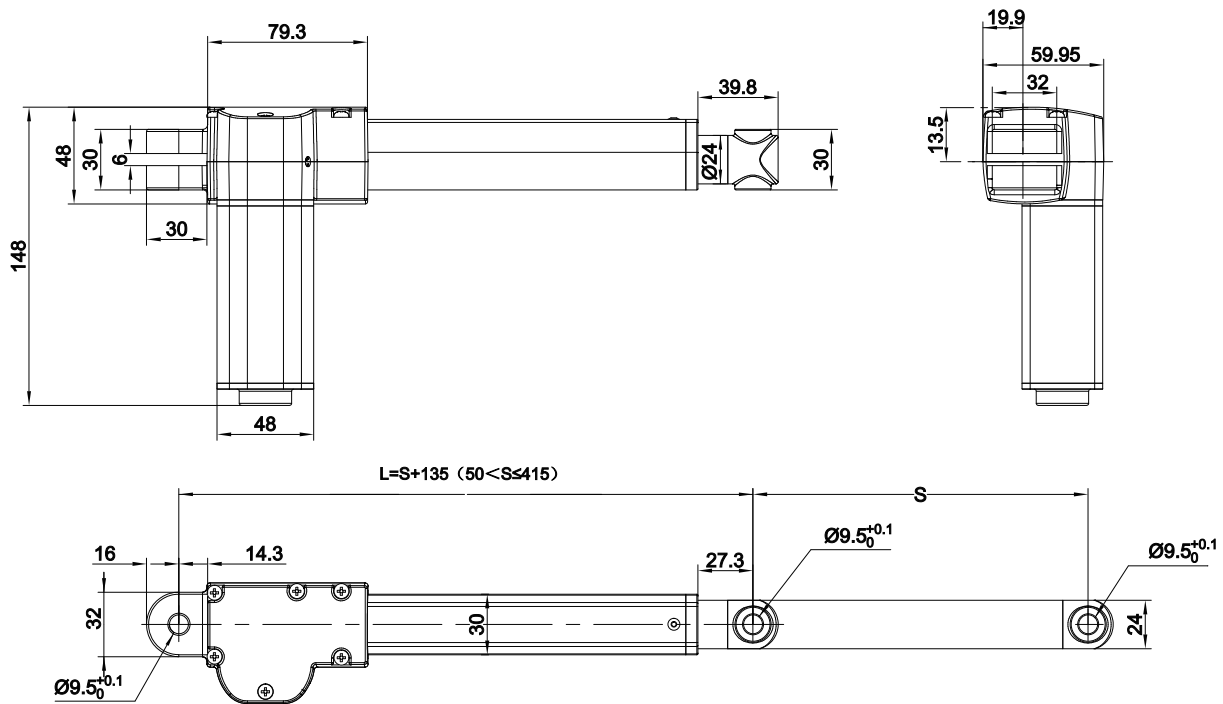
Dynamic load push(N):	4500 2500 800 500
Dynamic load pull (N):	2000 800 500
Colour:	Black
IP Grade:	IP20
Stroke Length:	4500N: 50-200mm 2500N: 50-415mm 800N: 50-252mm 500N: 50-194mm
Installation Dimensions:	4500N: L=S+135(50<S≤200) 2500N: L=S+135(50<S≤415) Stroke ≥ 200mm needs to add top clevis, it can only be used in the occasion of straight up and down. 800N: L=510mm(S=252) 500N: L=355mm(S=194)
Noise Level:	no-load ≤ 48dB, load ≤ 50 (ambient noise ≤ 40dB) 800N&500N configuration, no-load noise ≤ 43dB (ambient noise ≤ 35dB, 500mm detection distance)
Optional:	Hall sensor, Only push no pull
Limit Switch:	Built-in (electrical)
Weight:	About 2kg (different stroke length and installation dimensions with different weight)
Static bending moment:	Lateral load are not allowed
Approval:	ANSI/UL962-2020

Usage

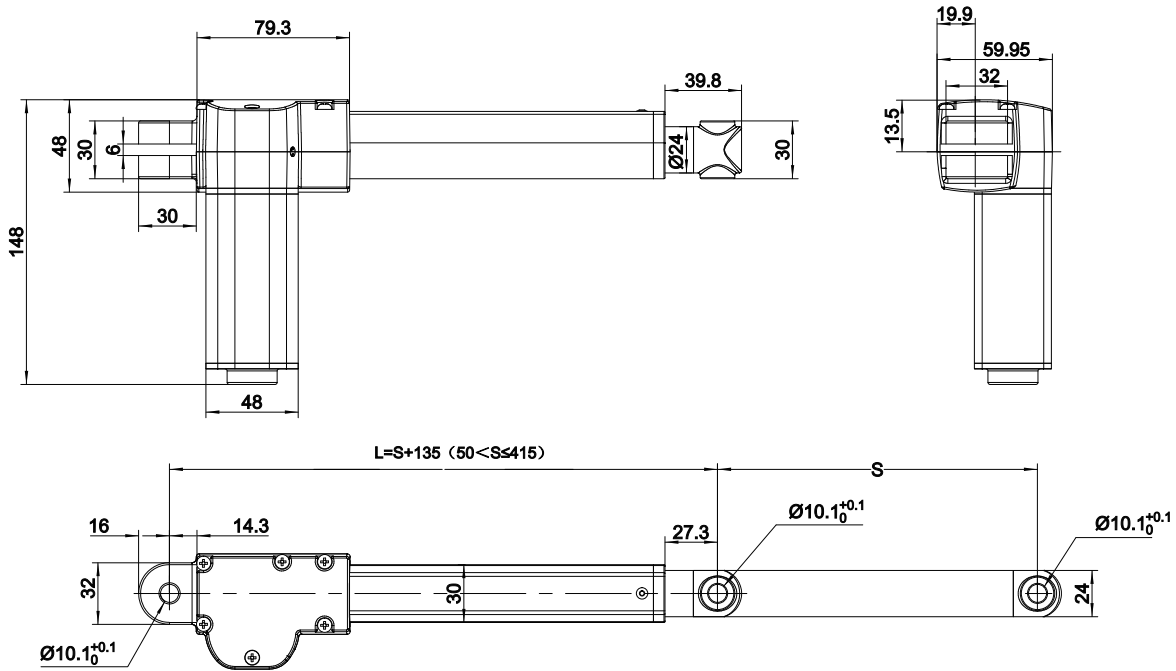
Duty Cycle:	10%, max. 2min.continuous working and 18 min.off
Operating Temperature:	+5°C to +40°C
Reserve Temperature:	-10°C to 50°C
Supporting Control Box:	match with JIECANG control box or adapter
Relative Humidity:	Under30°C, 20% to 90%, non-condensing
Atmospheric Pressure:	700 to1060hPa

Dimension Drawing

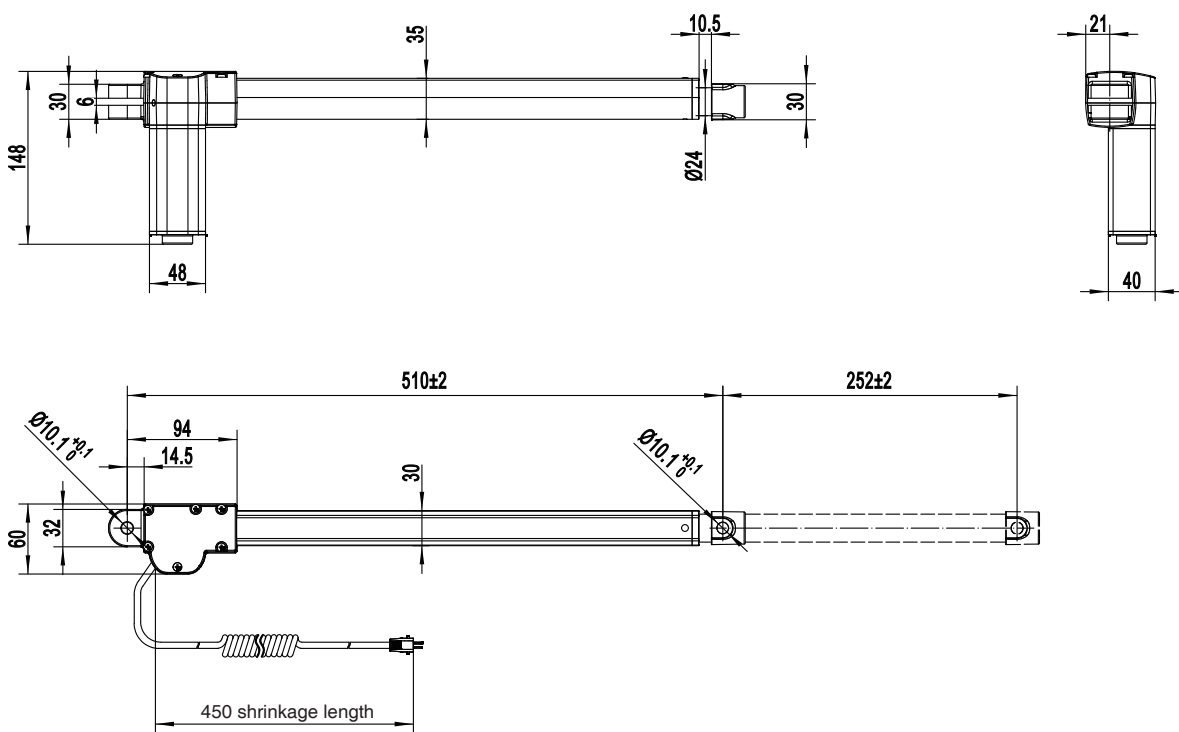
Top clevis F41, end clevis B27



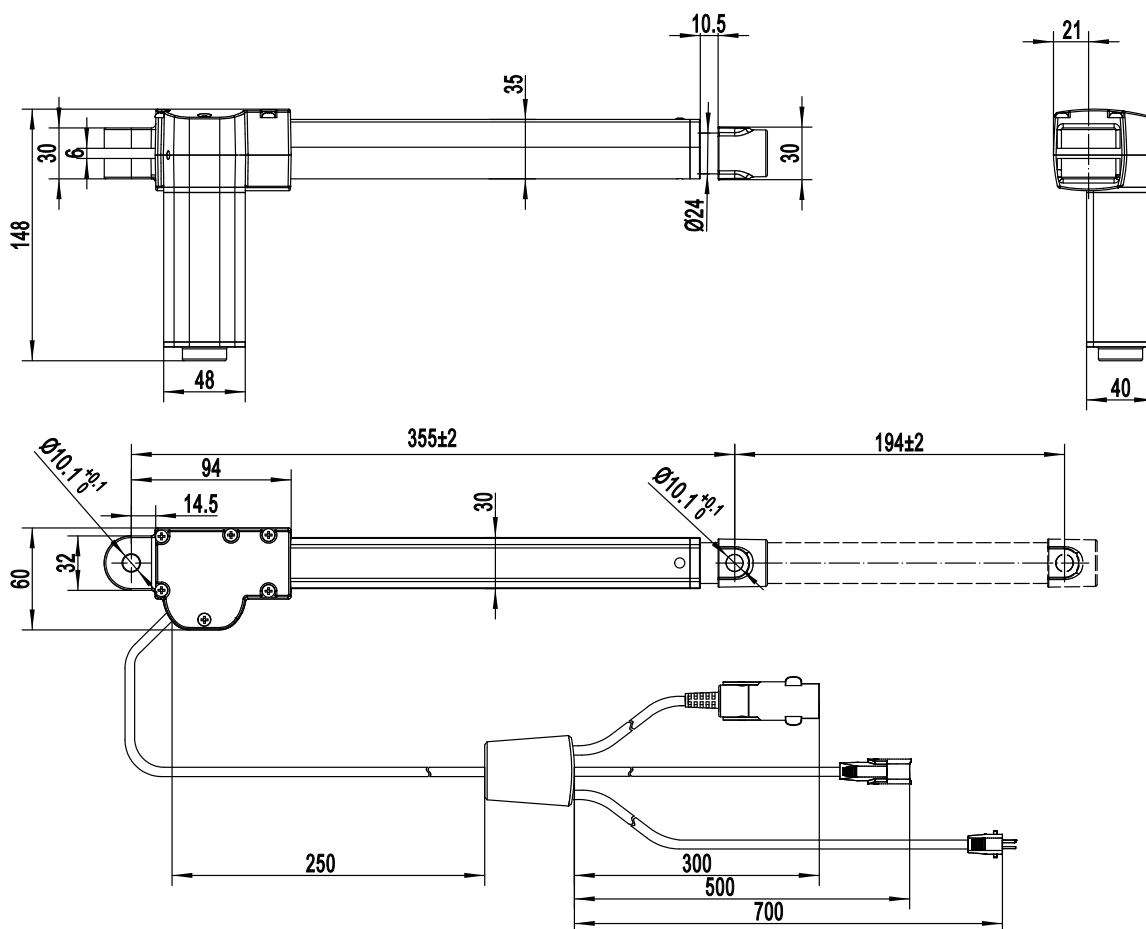
Top clevis F86, end clevis B48



Top clevis F89, end clevis B48



Top clevis F89, end clevis B48

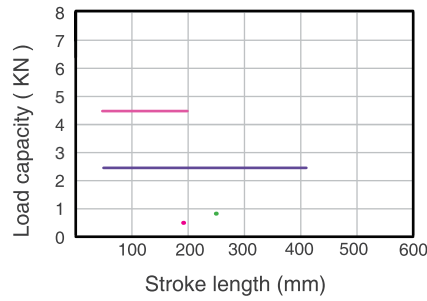


Technical Data-Standard value

Input voltage (VDC)	Spindle pitch (mm)	Max. load in push (N)	Max. load in pull (N)	Mechanical self-lock (N)	Speed at no load/full load (mm/s)	Current at full load (A)
24	3	4500	2000	4500	6.4/4	≤ 5.0
24	4	2500	2000	2500	8.3/6.6	≤ 3.5
29	3	4500	2000	4500	7.7/5	≤ 5.0
29	4	2500	2000	2500	10/8	≤ 3.5
29	7.5	800	800	500	26/17.5	≤ 4
29	7.5	500	500	500	20/15	≤ 2.5

Remarks: It can achieve better self-locking ability with Jiecang control box;
The above data is the standard value of the test data (inspection specification) at room temperature of 25°C.

Diagram of relationship between stroke length and load

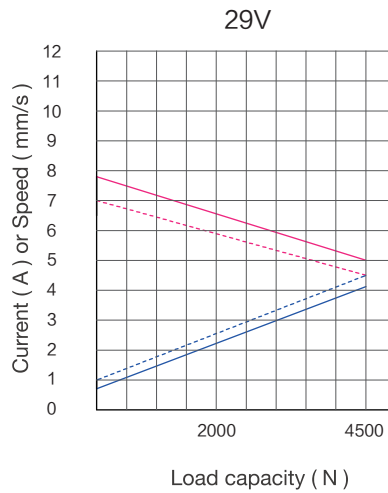
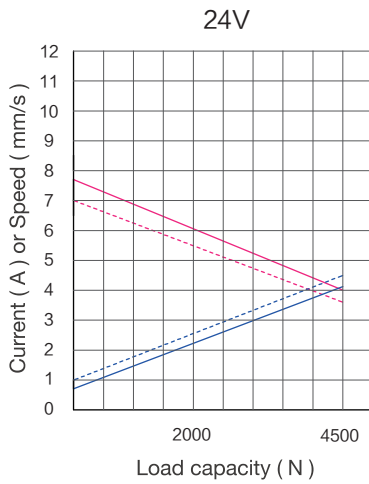


- Stroke 194mm/Load 0.5KN
- Stroke 252mm/Load 0.8KN

Characteristic Curve

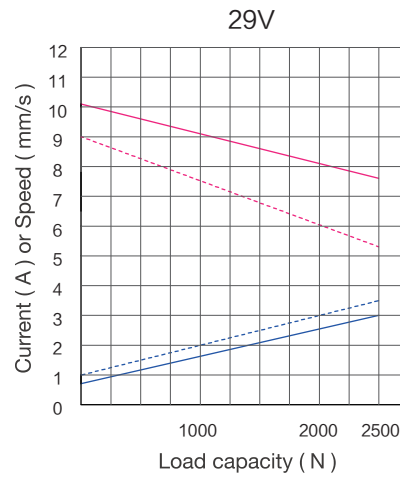
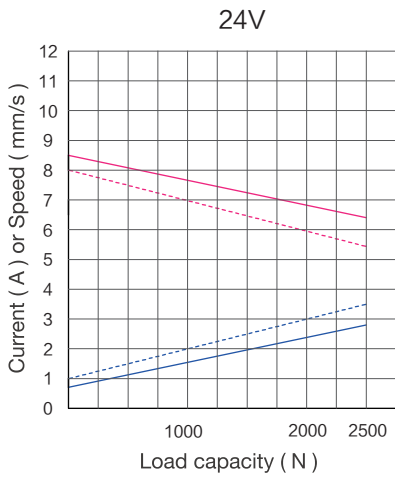
4500N

- Typical speed ———
- Min. speed - - - - -
- Typical current ———
- Max. current - - - - -

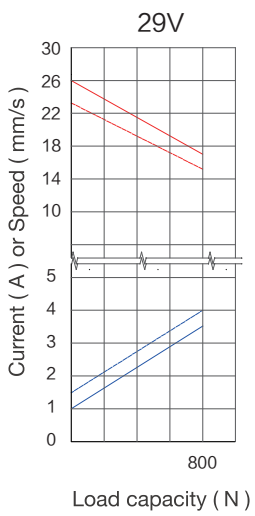


Typical speed ————
 Min. speed - - - - -
 Typical current ————
 Max. current - - - - -

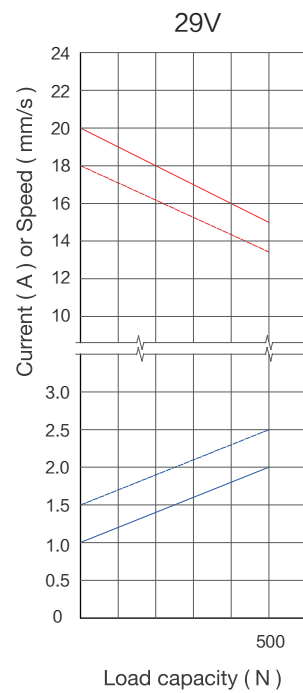
2500N



800N



500N



Ordering Example

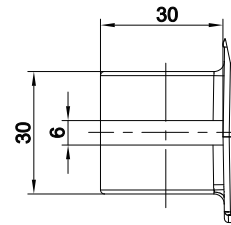
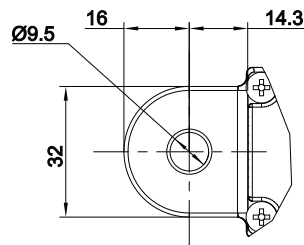
Take **JC35L31PY4D5424150/285HBB27SF410211D0** for example

Model	JC35L31	
Optional features	X	0 = Standard / P = Only push no pull / Y= Hall sensor PY=Only push no pull option + Hall sensor
Load in push	X	4D5=4500N / 2D5=2500N
Speed at full load	X	4=4mm/s 5=5mm/s 8=8mm/s
Input voltage	XX	24=24VDC / 29=29VDC
Stroke length/ Installation dimension	XXX/XXX	Stroke length = XXX Retracted length = XXX
Clevis directions	X	H = H direction
Color	X	B=Black
End clevis specification	XX	B27=slot 6, slot depth 30, and the hole diameter is ϕ 9.5 B48=slot 6, slot depth 30, and the hole diameter is ϕ 9.5
End clevis material	X	S= Plastic end clevis
Top clevis specification	XX	F41: No slot, 9.5 diameter with ψ 24 aluminum tube F86: No slot, 10.1 diameter with ψ 24 aluminum tube F89=add JC35L22 plastic cushion sleeve, hole diameter 10.1; Add JC35L22 cushion cover; Add D inner tube front pull sleeve (black)
Brake specification	X	0=Standard
Type of plug and cable	XX	02 = 4-pin DIN plug 21=6 pin ET plug 135=L meter 01 insert 2-core spring wire 136=L meter black 5 core female plug to 0.5 meter 01 female plug to 0.7 meter 01 female plug to 0.3 meter one to three wire
Cable length	XXX	1D0 = 1m / 0D8 = 0.8m

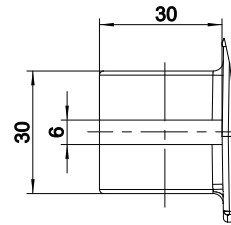
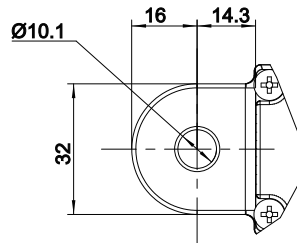
Ordering Details

Dimension drawing of clevis

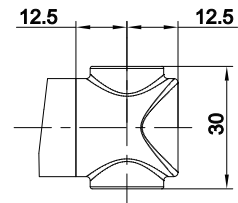
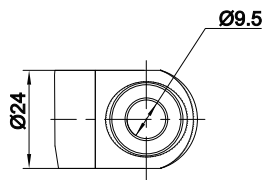
End clevis: B27



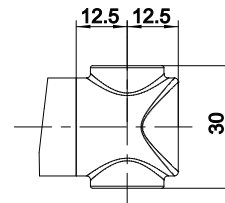
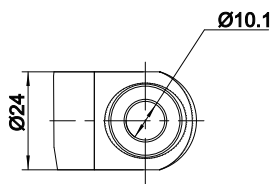
End clevis: B48



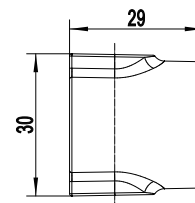
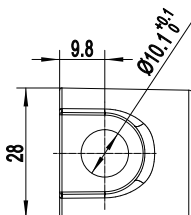
Top clevis: F41



Top clevis: F86



Top clevis: F89





Strictly abiding by medical safety certifications

Passed EMC tests. To ensure our products pass all kinds of tests domestic or abroad.



Communication protocol development

Aiming at different applications, develop more extensive functions for control system.



Professional customization

Powerful R&D strength, fully satisfy customers' needs. Development cycle is about 10 days, seizing more market opportunities



Intelligent Control of Bluetooth

Mobile phone as the remote, applying in home care. Market pioneer, Jiecang provides better choices



Wireless Communication

Controllers adopt high-frequency wireless system. It can avoid interference mixing with signal receivers, assisting in remote control over medical equipment.



Latest Weighing System

Designed for physiotherapy beds and medical care beds. Cantilever carrying weighing sensor, it is applicable to different bedsteads dispensing with any adjustment

Disclaimer and Exclusion of Liability

The user must determine the suitability of JIECANG products under specific conditions. JIECANG is committed to providing the latest product information. However, as JIECANG' s product are constantly improving, it is possible to make changes to JIECANG' s product without prior notice. Therefore, JIECANG cannot guarantee the correctness and authenticity of the product information. Although JIECANG will do its best to meet the order requirements, due to the above reasons, JIECANG cannot guarantee the delivery capacity of any specific product.

Therefore, JIECANG reserves the right to stop selling any products listed on the website or product catalog or other JIECANG written materials. All sales activities must be carried out in accordance with the requirements of JIECANG sales and Delivery Standard Clauses. For copies of relevant documents, please contact JIECANG.



Notes for mounting and usage can be found in the corresponding mounting manual