

JC35L28 Linear Actuator

1. JC35L28 is a actuator with small-size、fast speed、high efficiency、low noise、 high load、 multiple functions could be used in multiple variety applications.It has following specifications: JC35L28-10000N (push); JC35L28-8000N (push).The features of JC35L28 is big load capacity, fast speed, Max. IP grade could be IPX6 and low noise.

2. Suitable for medical bed;operation bed;nursing bed, patient lift and etc.



Features And Options

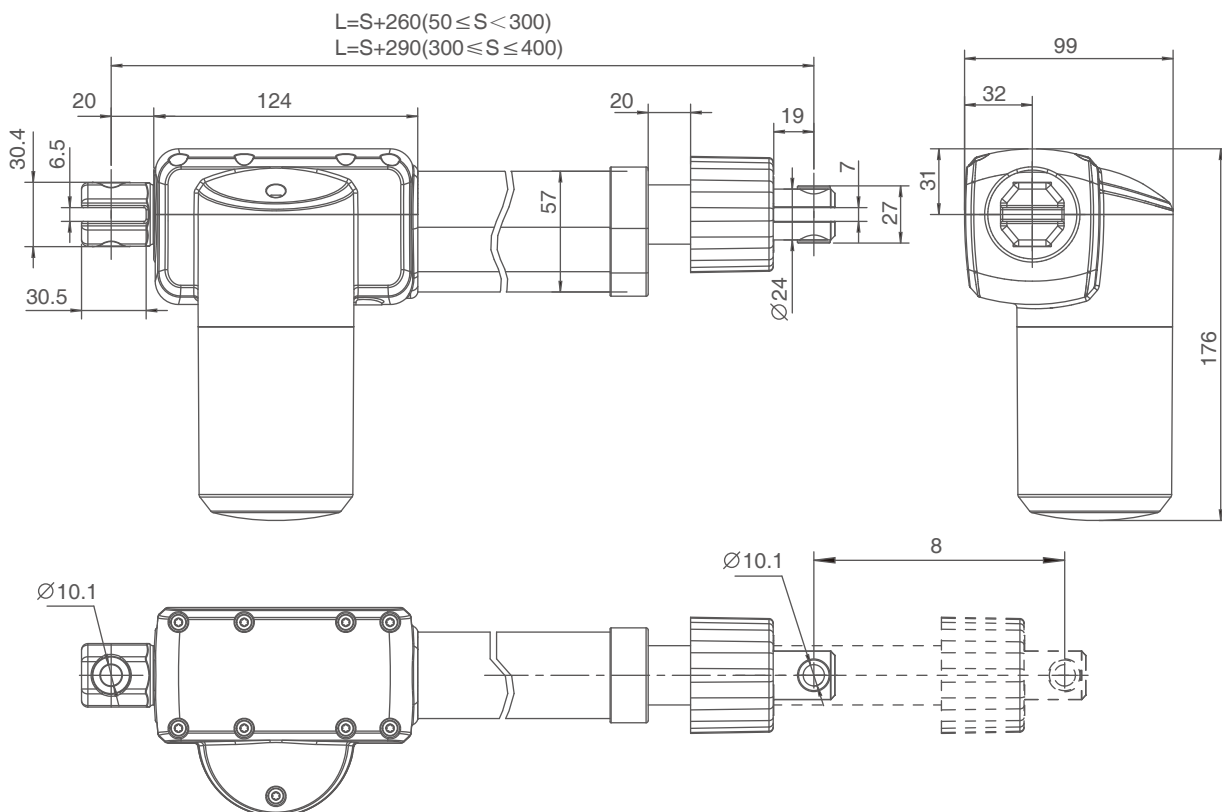
Dynamic load push(N):	10000N 8000N
Dynamic load pull (N):	/
Colour:	Gray
IP Grade:	Max. IPX6
Stroke Length:	Patient lift version: 50-400mm(in steps of 4mm) Standard version: 50-250mm (in steps of 4mm)
Installation Dimensions:	Patient lift version : L=S+260(50 ≤ S < 300, with manual) L=S+290(300 ≤ S ≤ 400, with manual) Standard version: L=S+185(50 ≤ S ≤ 250, standard)
Noise Level:	≤48dB, (environmental noise ≤40dB)
Standard:	Safety nut
Optional:	Hall sensor Only push no pull Manual operation
Limit Switch:	Built-in (electrical)
Weight:	About 3kg (different stroke length and installation dimensions with different weight)
Static bending moment:	Lateral load is not allowed
Flame retardant grade:	UL94 HB grade
Approval:	IEC60601-1:2012 EN 60601-1:2006+A12:2014 ANSI/AAMI ES60601-1:2005/(R)2012 and A1:2012, C1:2009/(R)2012 and A2:2010/(R)2012

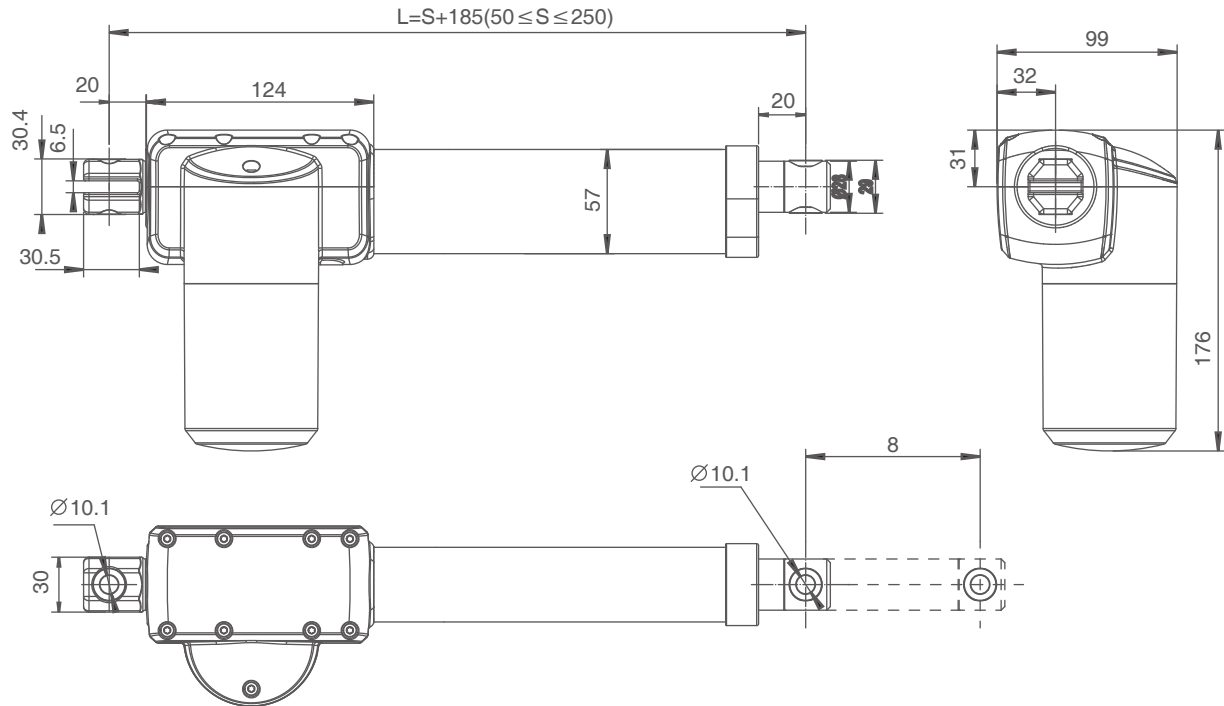
Usage

Duty Cycle:	10%, max. 2min.continuous working and 18 min.off
Operating Temperature:	+5°C to +40°C
Reserve Temperature:	-10°C to +50°C
Supporting Control Box:	match with JIECANG control box.
Relative Humidity:	20% to 90% at 30°C, non-condensing
Atmospheric Pressure:	700 to 1060hPa

Dimension drawing

Patient lift version, top clevis F60, end clevis B40



Standard version, top clevis F81, end clevis B40


Technical Data-Standard value

Input voltage (VDC)	Spindle pitch (mm)	Max. load in push (N)	Max. load in pull (N)	Mechanical self-lock (N)	Speed at no load/full load (mm/s)	Current at full load (A)
24	6	10000	/	10000	6/4	≅7
	6	8000	/	8000	8/5.5	≅7
29	6	10000	/	10000	7.5/5.5	≅7.5
	6	8000	/	8000	10/7.3	≅7.5

Remarks: It can achieve better self-locking ability with Jiecang control box;
The above data is the standard value of the test data (inspection specification) at room temperature of 25 °C.

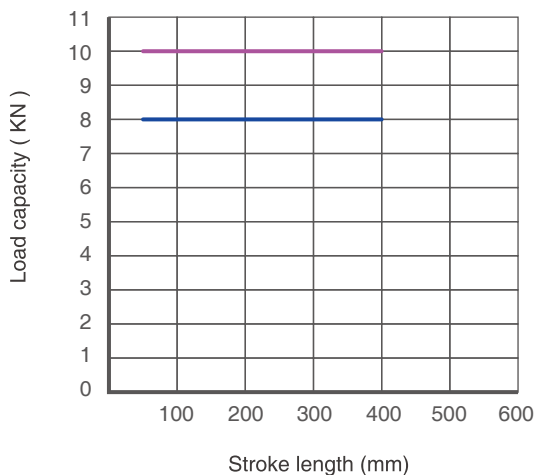
Ordering Example

Take **JC35L28X105D529350/640HGB40LF602022D0** for example

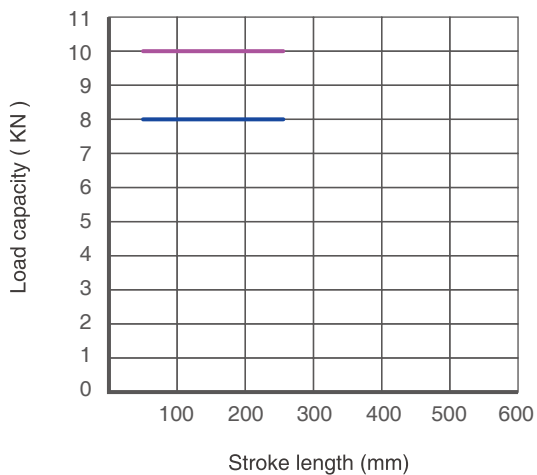
Model	JC35L28	
Optional features	X	0=Standard P= Only push no pull S= Safety nut Y= Hall sensor PY=Only push no pull + Hall sensor SY=safety nut +hall sensor N=only push no pull+safety nut+hall sensor
Load in push	X	10=10000N 8=8000N
Speed at full load	X	5D5=5.5mm/s 7D3=7.3mm/s
Input voltage	XX	29=29VDC
Stroke length/ Installation dimension	XXX/XXX	Stroke length=XXX Installation dimensions =XXX
Clevis directions	X	H=H direction V=V direction
Color	X	G=Gray
End clevis specification	XX	40=B40; slot width 6.5, slot depth 30.5, hole diameter 14.2, JC35L28 tail pull, (with puller cushion sleeve hole diameter 10.1, 30051609 grey hole distance end face 25
End clevis material	X	L=Aluminium alloy
Top clevis specification	XX	60=F60,JC35SX hand rotation assembly, Gala head spacer bore 10.1,white 81=F81,JC35L28 front pull, hole diameter 14.2mm, no slot, hole center to rewind slot distance 11.5mm, total length 34mm
Brake specification	X	2= brake in push
Type of plug and cable	XX	02=4-pin DIN plug 10=5 pin DIN plug 93=6 Pin Mini-Fit elbow plug
Cable length	XXX	2D0=2m 0D5=0.5m

Diagram of relationship between stroke length and load

Patient lift version



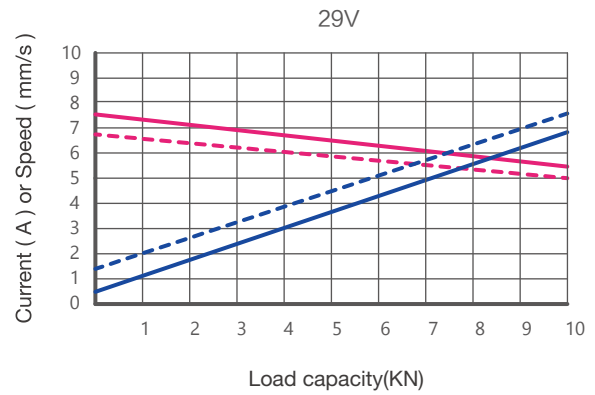
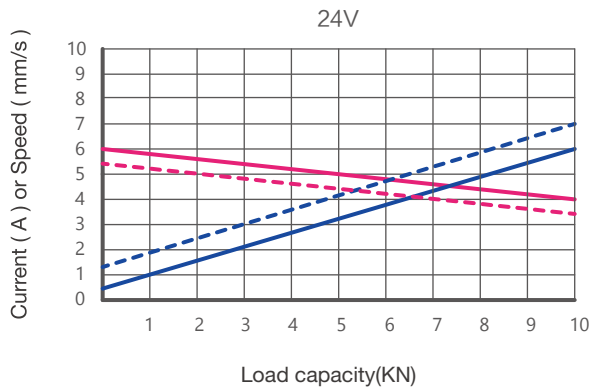
standard version



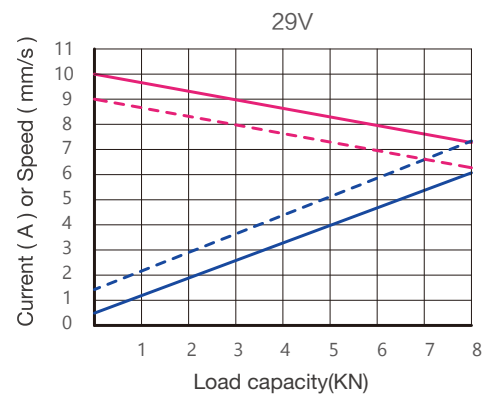
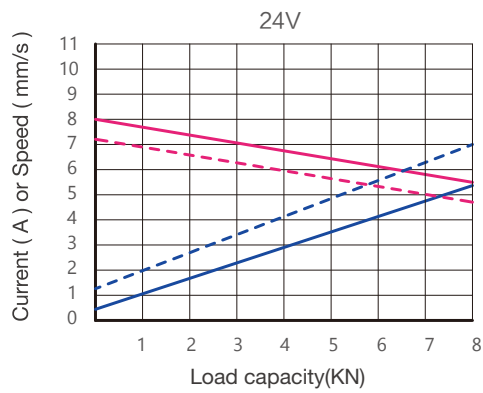
Characteristic Curve

10000N

Typical speed ———
 Min. speed - - - -
 Typical current ———
 Max. current - - - -



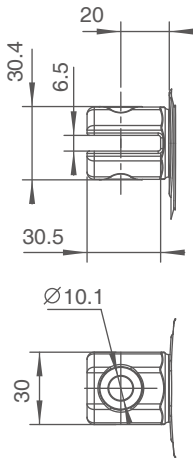
8000N



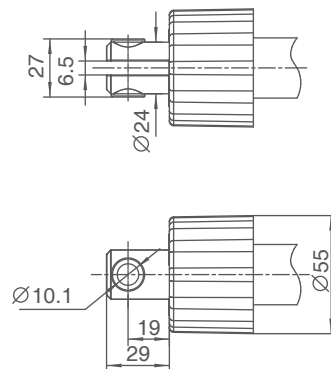
Ordering Details

Dimension drawing of clevis

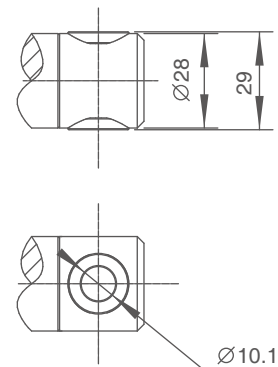
End clevis:B40



Patient lift version,top clevis:F60



Standard version,top clevis F81

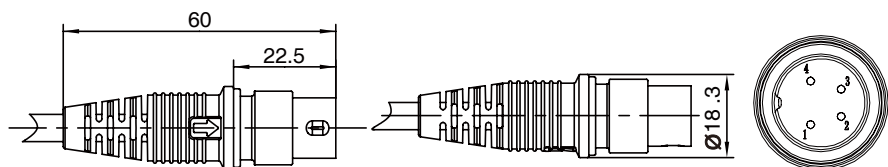


Motor wire

4-pin DIN plug (standard)

Supporting control boxes:
JCB35Q / JCB35T / JCB35R /
JCB35R1 / JCB35S

Pin	Color	Functions
1	NC	Not connected
2	Brown	power with positive voltage, actuator going down
3	Blue	power with positive voltage, actuator going up
4	NC	Not connected
Outer Circle	NC	Not connected

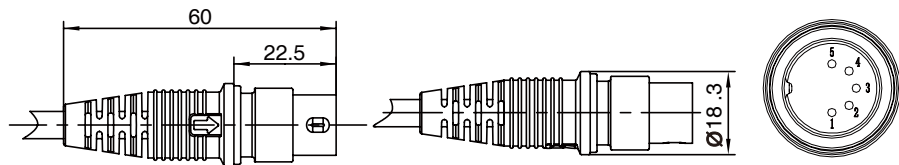


5 pin DIN plug (actuators with Hall sensor)

Supporting control boxes:
JCB35Q / JCB35T / JCB353R /
JCB35R1 / JCB35S



Pin	Color	Functions
1	Red	5V
2	Brown	power with positive voltage, actuator going down
3	Black	GND
4	Blue	power with positive voltage, actuator going up
5	Yellow	Hall sensor signal 1
Outer Circle	Orange	Hall sensor signal 2

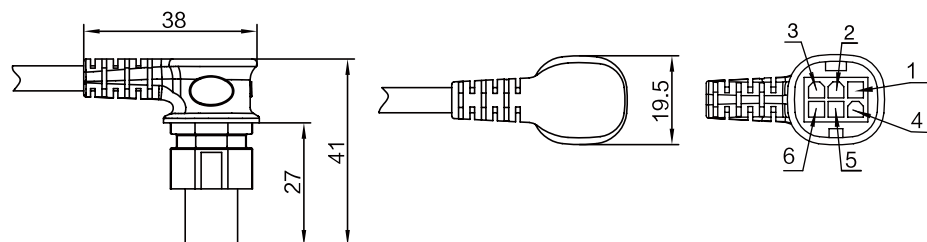


6 Pin Mini-Fit elbow plug

Matching control box :
JCB35T2 / JCB35T3 / JCB35Q3



Pin	Color	Function
1	Red	When not in the lower limit, it is connected with orange
2	Brown	power with positive voltage, actuator going down
3	Black	When not in the upper limit, it is connected with yellow
4	Blue	power with positive voltage, actuator going up
5	Yellow	When not in the upper limit, it is connected with black
Outer Circle	Orange	When not in the lower limit, it is connected with red





Strictly abiding by medical safety certifications

Passed EMC tests. To ensure our products pass all kinds of tests domestic or abroad.



Communication protocol development

Aiming at different applications, develop more extensive functions for control system.



Professional customization

Powerful R&D strength, fully satisfy customers' needs. Development cycle is about 10 days, seizing more market opportunities



Intelligent Control of Bluetooth

Mobile phone as the remote, applying in home care. Market pioneer, Jiecang provides better choices



Wireless Communication

Controllers adopt high-frequency wireless system. It can avoid interference mixing with signal receivers, assisting in remote control over medical equipment.



Latest Weighing System

Designed for physiotherapy beds and medical care beds. Cantilever carrying weighing sensor, it is applicable to different bedsteads dispensing with any adjustment

Disclaimer and Exclusion of Liability

The user must determine the suitability of JIECANG products under specific conditions. JIECANG is committed to providing the latest product information. However, as JIECANG' s product are constantly improving, it is possible to make changes to JIECANG' s product without prior notice. Therefore, JIECANG cannot guarantee the correctness and authenticity of the product information. Although JIECANG will do its best to meet the order requirements, due to the above reasons, JIECANG cannot guarantee the delivery capacity of any specific product.

Therefore, JIECANG reserves the right to stop selling any products listed on the website or product catalog or other JIECANG written materials. All sales activities must be carried out in accordance with the requirements of JIECANG sales and Delivery Standard Clauses. For copies of relevant documents, please contact JIECANG.



Notes for mounting and usage can be found in the corresponding mounting manual