

Linear Actuator JC35L16



Data sheet

Linear Actuator JC35L16

JC35L16 is a low-noise, high-thrust actuator, mainly used in smart homes, such as adjustable bases, multifunctional sofas, etc.



Features

- Dynamic load push:6000N
- Colour: Black
- IP grade: IP21
- Motor: 29 V DC
- Stroke length: 50-300mm (6000N)
- Retracted length:
 $L \geq S+150(50 \leq S \leq 200)$
 $L \geq S+160(200 < S \leq 300)$
- Noise level: $\leq 46\text{dB}$ (Ambient Noise $\leq 38\text{dB}$)
- Hall sensor: Optional
- Anti-pitch: Optional
- Built-in switch: power switch
- Weight: 1.5kg
- Static bending moment: no lateral load is allowed
- Flame retardant grade: UL94V-0

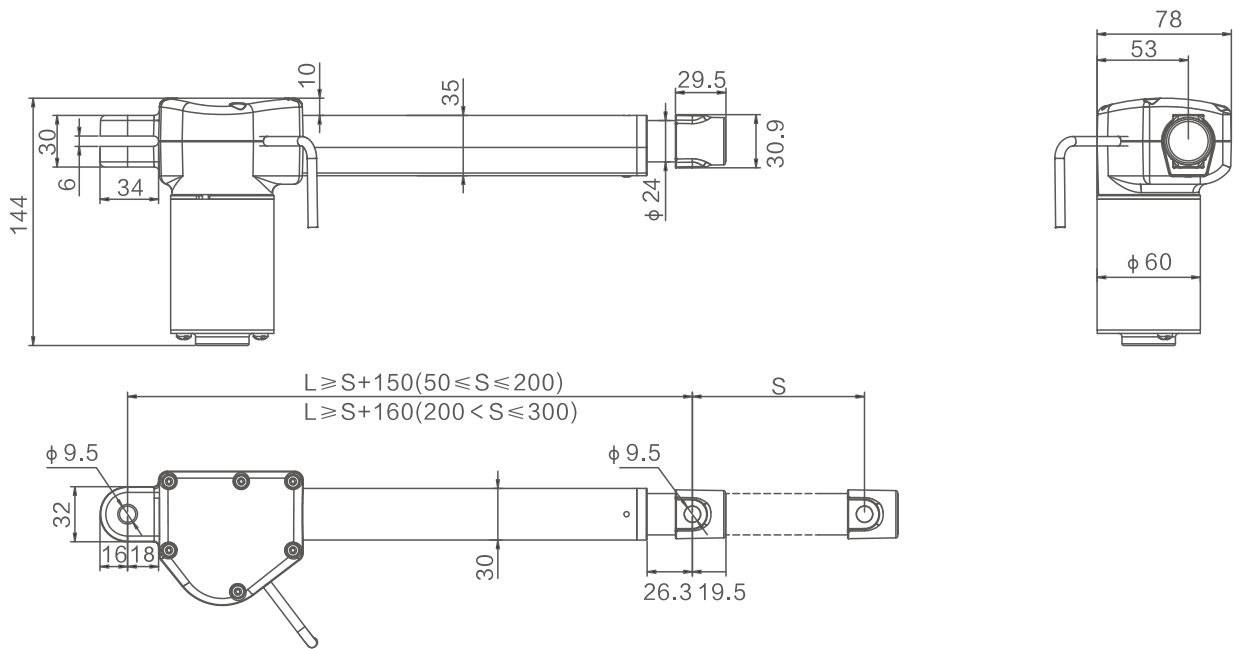
Usage

- Duty cycle: 10%; Use for 2 minutes and rest for 18 minutes
- Operating temperature: 5-40°C
- Storage temperature: -10-50°C
- Supporting controller voltage:29VDC
- Relative humidity: 20%-90% at 30°C, non-condensing
- Atmospheric pressure: 700-1060 hPa
- Approval:
 IEC60335-1:2012
 EN60335-1:2012+A11:2014+A13:2017+A1:2019
 +A14:2019+A2:2019
 UL962

Technical specifications

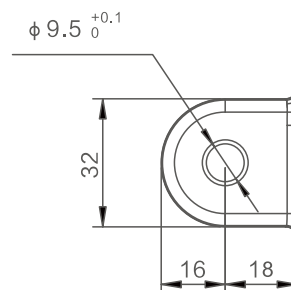
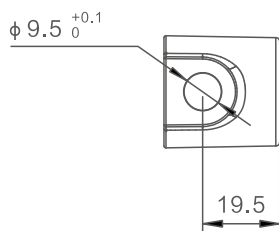
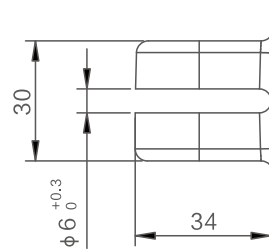
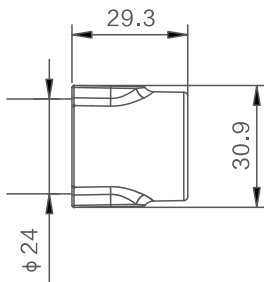
Input voltage (VDC)	Spindle Pitch (mm)	Maximum load (N)	Self-locking load (N)	speed at 0/Full Load (mm/s)	Speed at Full Load (mm/s)	Current at Full Load (A)
29	3	6000	6000	4.5	3.3	3.5

Dimension

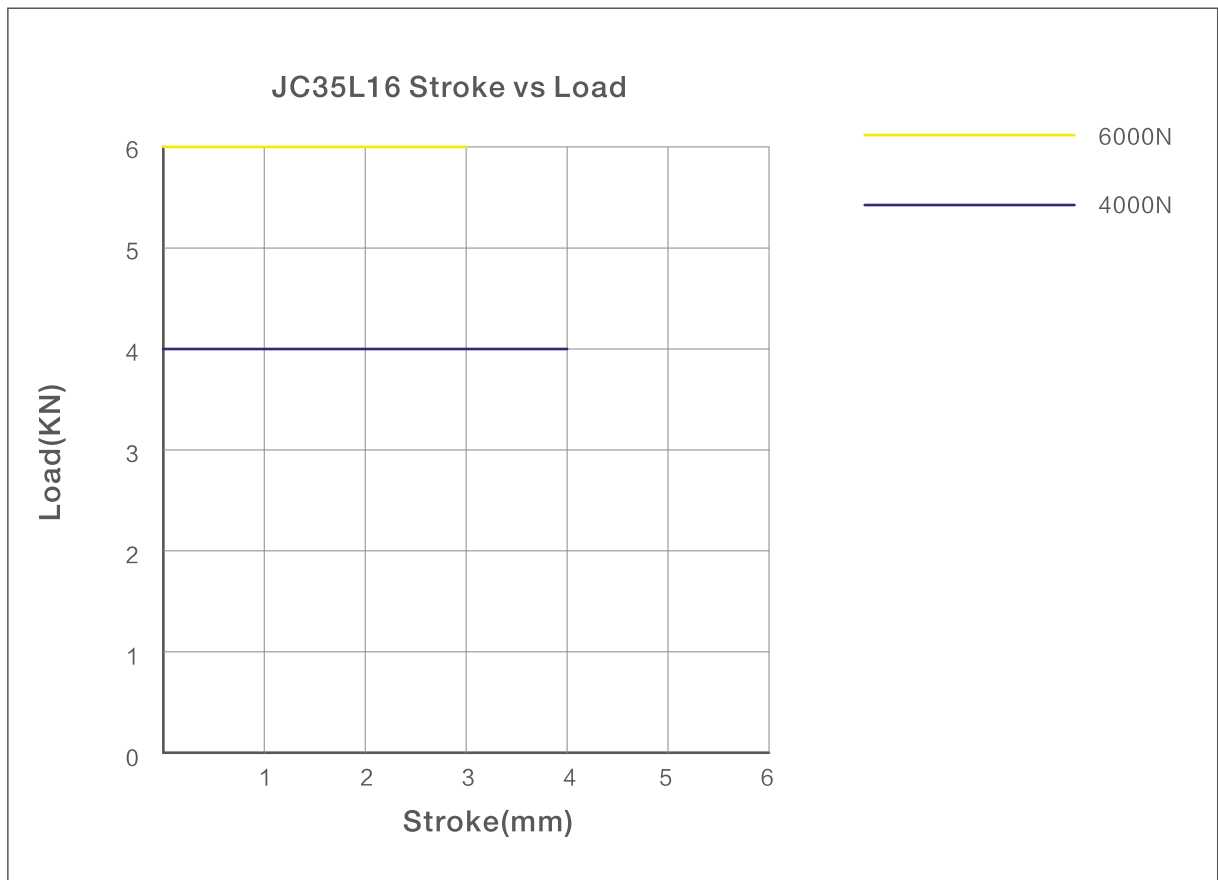
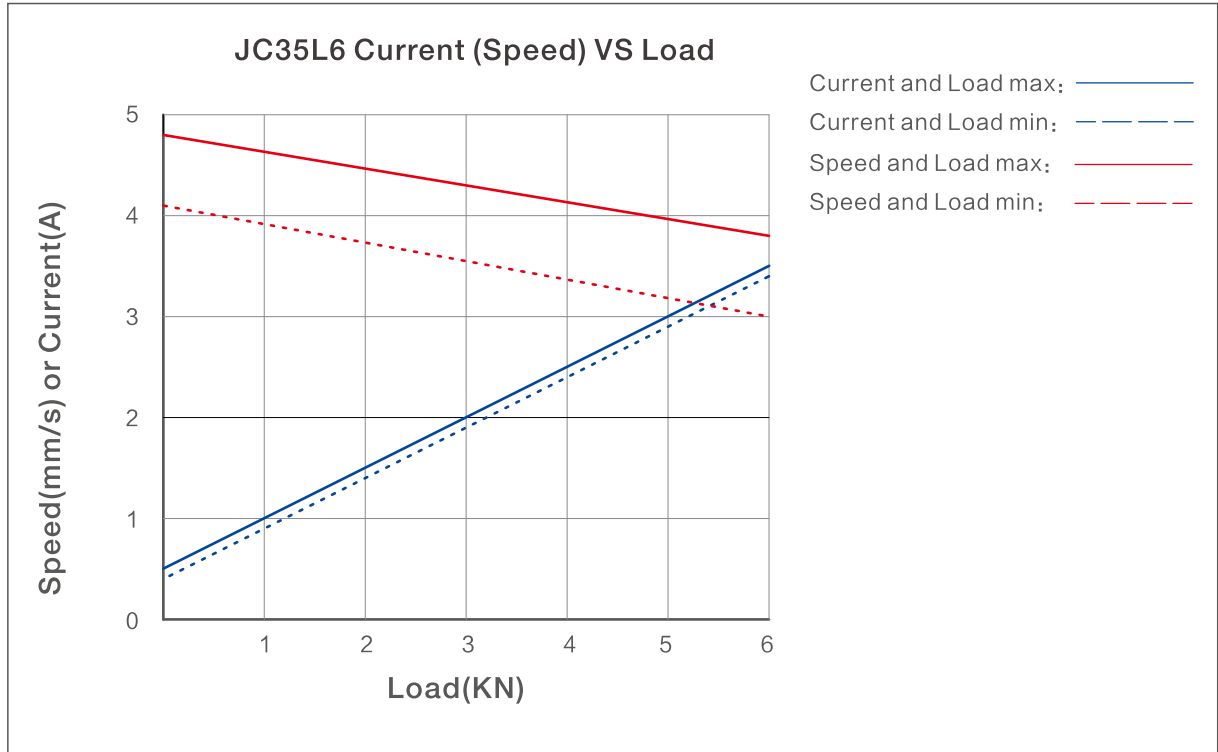


Top clevis specifications:
1000-6000N(Universal)

End clevis specifications:
1000-6000N(Universal)



Performance date: 6000N



Order Key Example

Type	JC35L16	
Option	X	0=No Option P=Anti-pitch Function Y=Dual Hall Sensor YP=Dual Hall Sensor + Anti-pitch Function
Load	X	6=6000N 4=4000N
Speed at Full Load	XXX	3.3mm/s (Load 6000N) 4mm/s (Load 4000N)
Voltage	XX	29=29VDC
Stroke Length/ Retracted Length	XXX/XXX	Stroke Length=100mm Retracted Length=250mm
Mounting Direction	X	H=Horizontal
Colour	X	B=Black
End Clevis Specification	XX	11=B11:Slot width 6,5, Slot depth 34, Aperture 9,5, JC35L16 end clevis (Integrated with gearbox)
End Clevis Materia	X	0=See end clevis specification description
Top Clevis Specification	XX	17=F17: holes in the inner tube 14,2, Distance between hole and end face 17; add L22 metal gasket cover and L16 plastic bushing, aperture 9.5; add D inner tube front pull sleeve (black)
Torsion Spring	X	0=No torsion spring
Plug and Cable Type	XX	21=6pin ET plug 6pin actuator cable 72=Double channel 5 pin female insert with wire buckle 01 male connector 2 pin straight cable
Cable length	XXX	1D0=1m, 1D5=1.5m