

JC35L12 Linear Actuator

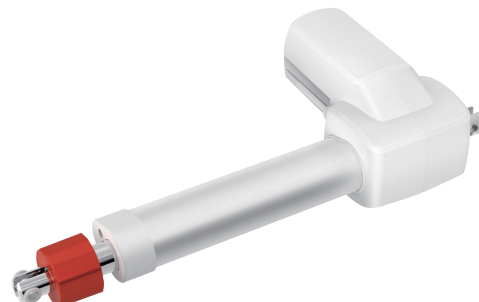
Application field - Medical Line
 Preferably in patient lift and medical bed

JC35L12 is a kind of actuator with large load capacity and fast speed, with manual operation and only push functions. The large load capacity and small installation dimensions make it widely used in the market and provide high-load solutions for many occasions.

In terms of high load capacity, high IP grade, low noise and some safety features, JC35L12 shows excellent performance, among which:

- The large module design of gear improves the safety performance and service life of actuator;
- The safety nut is added to avoid the danger of the actuator sliding rapidly due to the damage of the nut;
- Electrical limit switch and mechanical limit double protection, prevent locked rotor and overshoot in order to prolong service life;
- In case of power failure or other emergency, it can be lowered manually;
- IP grade: Max. IPX6.

It is suitable for patient lift and medical bed.



Features And Options

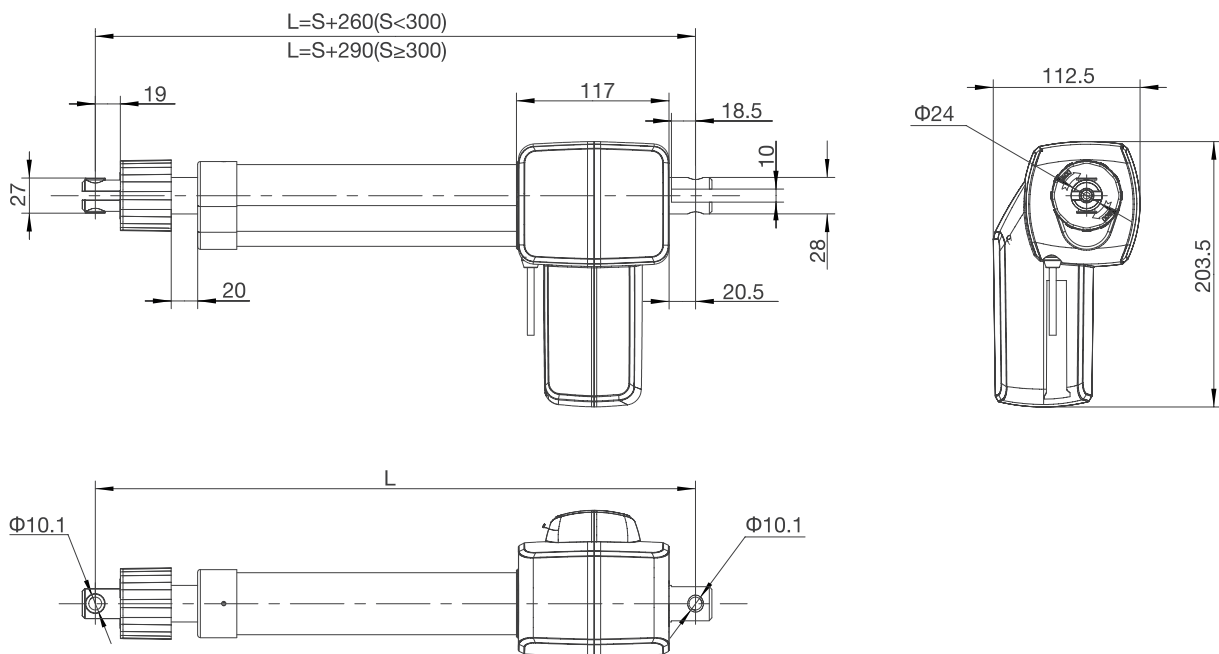
Dynamic load push(N):	8000
Colour:	Gray
manual operation:	Red
IP Grade:	Max.IPX6
Stroke Length:	8000N: 50-400mm (in steps of 4mm)
Installation Dimensions:	L=310 (S≤300) / L=S+260 (50<S≤300) / L=S+260 (50<S≤300)
Noise Level:	≤50dB (environmental noise≤40dB)
Standard:	Safe nut, Mechanical limit switch, Only push, Manual operation
Limit Switch:	Built-in (electrical)
Weight:	About 4kg (different stroke length and installation dimensions with different weight)
Static bending moment:	lateral load is not allowed
Approval:	IEC60601-1: 2012 EN 60601-1: 2006+A12:2014 ANSI/AAMI ES60601-1: 2005/(R)2012 and A1: 2012 C1:2009/(R)2012 and A2: 2010/(R)2012

Usage

Duty Cycle:	10%, max. 2min.continuous working and 18 min.off
Operating Temperature:	+5 °C to +40°C
Reserve Temperature:	-10°C to 50°C
Supporting Control Box:	it can be matched with Jiecang common controller
Relative Humidity:	20% to 90% at 30 °C, non-condensing
Atmospheric Pressure:	700 to 1060hPa

Dimension Drawing

Top clevis 60, end clevis G

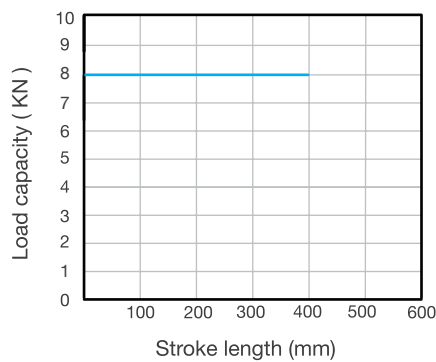


Technical Data-Standard Value

Input voltage (VDC)	Spindle pitch (mm)	Max. load in push (N)	Max. load in pull (N)	Mechanical self-lock (N)	Speed at no load/full load (mm/s)	Current at full load (A)
24	5	8000	6000	8000	8.2/6	≤ 9
24	4	8000	6000	8000	6.5/4.8	≤ 9
29	5	8000	8000	8000	8.5/7	≤ 9

Remarks: It can achieve better self-locking ability with Jiecang control box;
The above data is the standard value of the test data (inspection specification) at room temperature of 25°C.

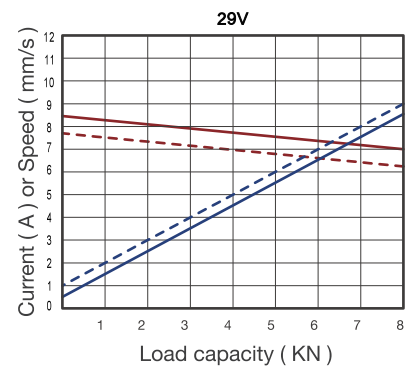
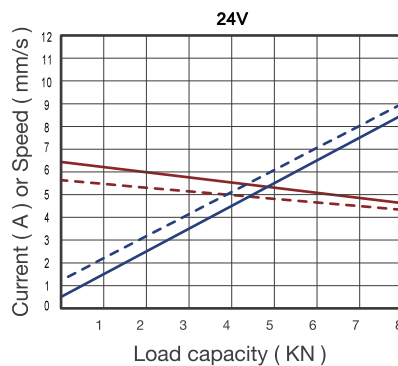
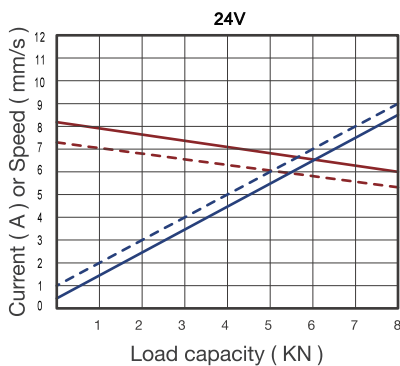
Diagram of relationship between stroke length and load



Characteristic Curve

8000N

Typical speed ———
Min. speed - - - -
Typical current ———
Max. current - - - -



Ordering Example

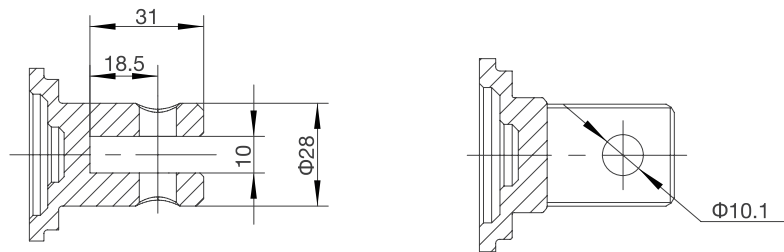
Take **JC35L12X8624300/590HGGG602892D0** for example

Model	JC35L12	
Optional features	X	X = Manual operation+Only push+Safety nut
Load in push	8	8 = 8000N
Speed at full load	6	6 = 6mm/s
Input voltage	24	24 = 24VDC
Stroke length/ Installation dimension	XXX/XXX	Stroke length = XXX Retracted length = XXX
Clevis directions	X	H = H direction / V = V direction
Color	X	G = Grey
End clevis specification	G	G = Slot 10 and hole diameter \varnothing 10.1
End clevis material	G	G = Steel
Top clevis specification	60	60= slot width 6.5 with \varnothing 10.1 plastic bushings
Brake specification	2	2 = Right brake
Type of plug and cable	89	89 = 6 pin Molex elbow plug 6 pin spring cord
Cable length	2D0	2D0 = 2m

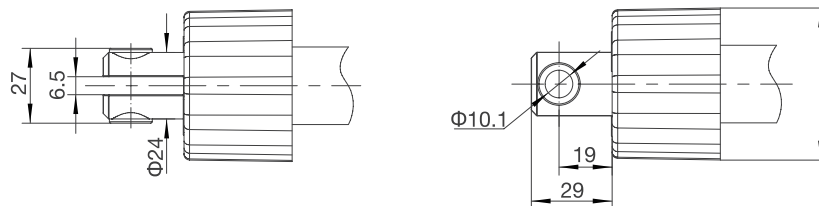
Ordering Details

Dimension drawing of clevis

End clevis: G



Top clevis: 60

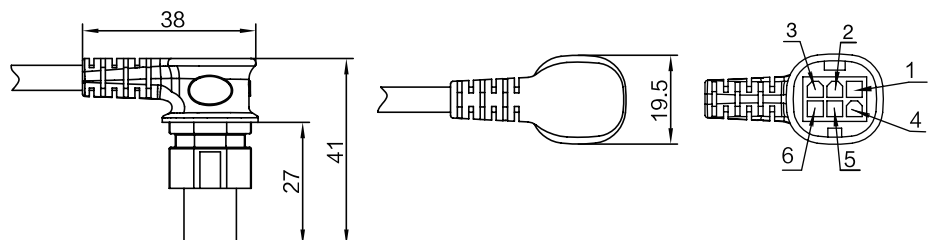
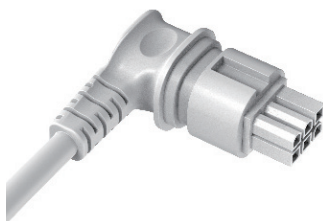


Motor wire

6 Pin Mini-Fit elbow plug

Matching control box :
JCB35T2 / JCB35T3 / JCB35Q3 /
JCB35K3

Pin	Color	Function
1	Red	When not in the lower limit, it is connected with orange
2	Brown	power with positive voltage, actuator going down
3	Black	When not in the upper limit, it is connected with yellow
4	Blue	power with positive voltage, actuator going up
5	Yellow	When not in the upper limit, it is connected with black
6	Orange	When not in the lower limit, it is connected with red





Strictly abiding by medical safety certifications

Passed EMC tests. To ensure our products pass all kinds of tests domestic or abroad.



Communication protocol development

Aiming at different applications, develop more extensive functions for control system.



Professional customization

Powerful R&D strength, fully satisfy customers' needs. Development cycle is about 10 days, seizing more market opportunities



Intelligent Control of Bluetooth

Mobile phone as the remote, applying in home care. Market pioneer, Jiecang provides better choices



Wireless Communication

Controllers adopt high-frequency wireless system. It can avoid interference mixing with signal receivers, assisting in remote control over medical equipment.



Latest Weighing System

Designed for physiotherapy beds and medical care beds. Cantilever carrying weighing sensor, it is applicable to different bedsteads dispensing with any adjustment

Disclaimer and Exclusion of Liability

The user must determine the suitability of JIECANG products under specific conditions. JIECANG is committed to providing the latest product information. However, as JIECANG' s product are constantly improving, it is possible to make changes to JIECANG' s product without prior notice. Therefore, JIECANG cannot guarantee the correctness and authenticity of the product information. Although JIECANG will do its best to meet the order requirements, due to the above reasons, JIECANG cannot guarantee the delivery capacity of any specific product.

Therefore, JIECANG reserves the right to stop selling any products listed on the website or product catalog or other JIECANG written materials. All sales activities must be carried out in accordance with the requirements of JIECANG sales and Delivery Standard Clauses. For copies of relevant documents, please contact JIECANG.



Notes for mounting and usage can be found in the corresponding mounting manual