

JC35DS Linear Actuator

JC35DS is a hand-operated actuator with the following models: JC35DS-6000N (push); JC35DS is characterized by high-strength front and rear fixing devices; it can be operated by hand when power is off; low noise; It is suitable for medical beds, operating beds, nursing beds and other fields.



Features And Options

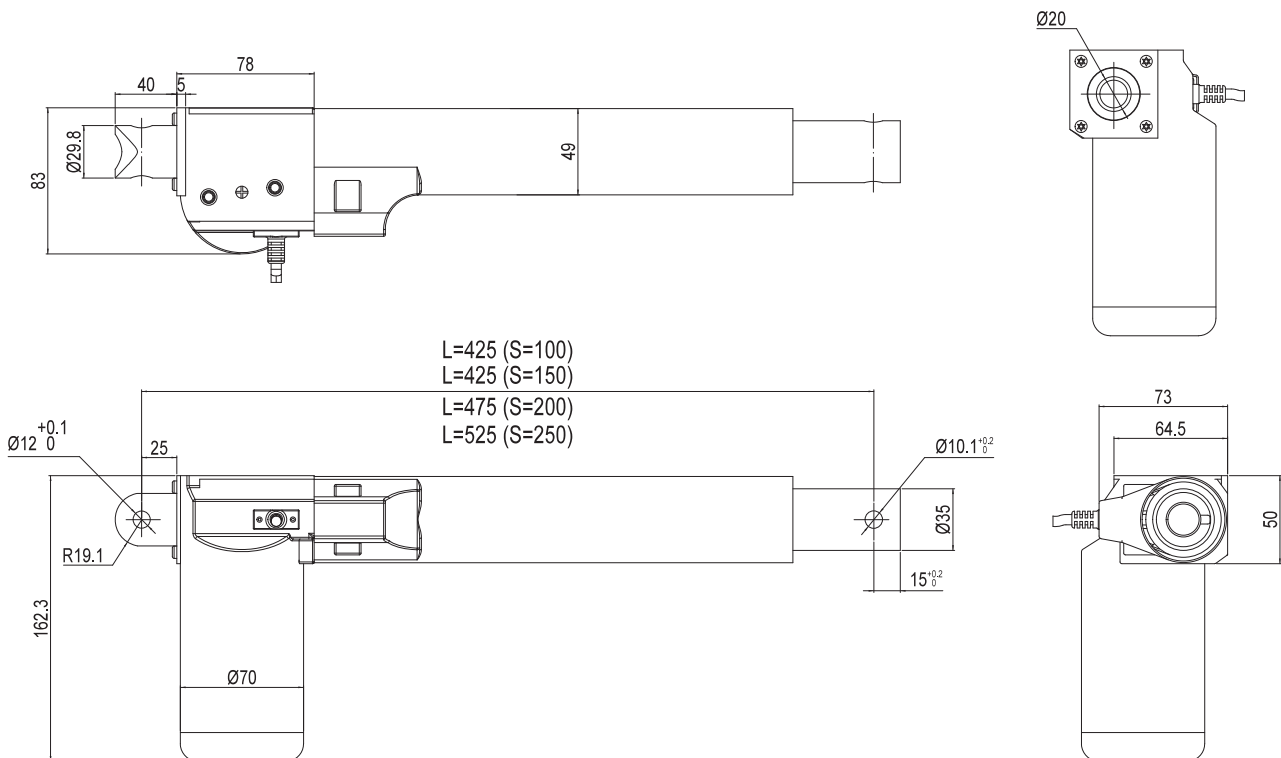
Dynamic load push(N):	6000N
Dynamic load pull (N):	/
Colour:	Grey / Black
IP Grade:	IP43
Stroke Length:	100mm / 150mm / 200mm / 250mm
Installation Dimensions:	L=425 (S=100) L=425 (S=150) L=475 (S=200) L=525 (S=250)
Limit Switch:	Built-in (electrical)
Noise Level:	≤52dB (environmental noise≤40dB)
Weight:	About 2.7kg (different stroke length and installation dimensions with different weight)
Static bending moment:	lateral load is not allowed
Approval:	IEC60601-1: 2012 EN 60601-1: 2006+A12:2014 ANSI/AAMI ES60601-1: 2005/(R)2012 and A1: 2012 C1:2009/(R)2012 and A2: 2010/(R)2012

Usage

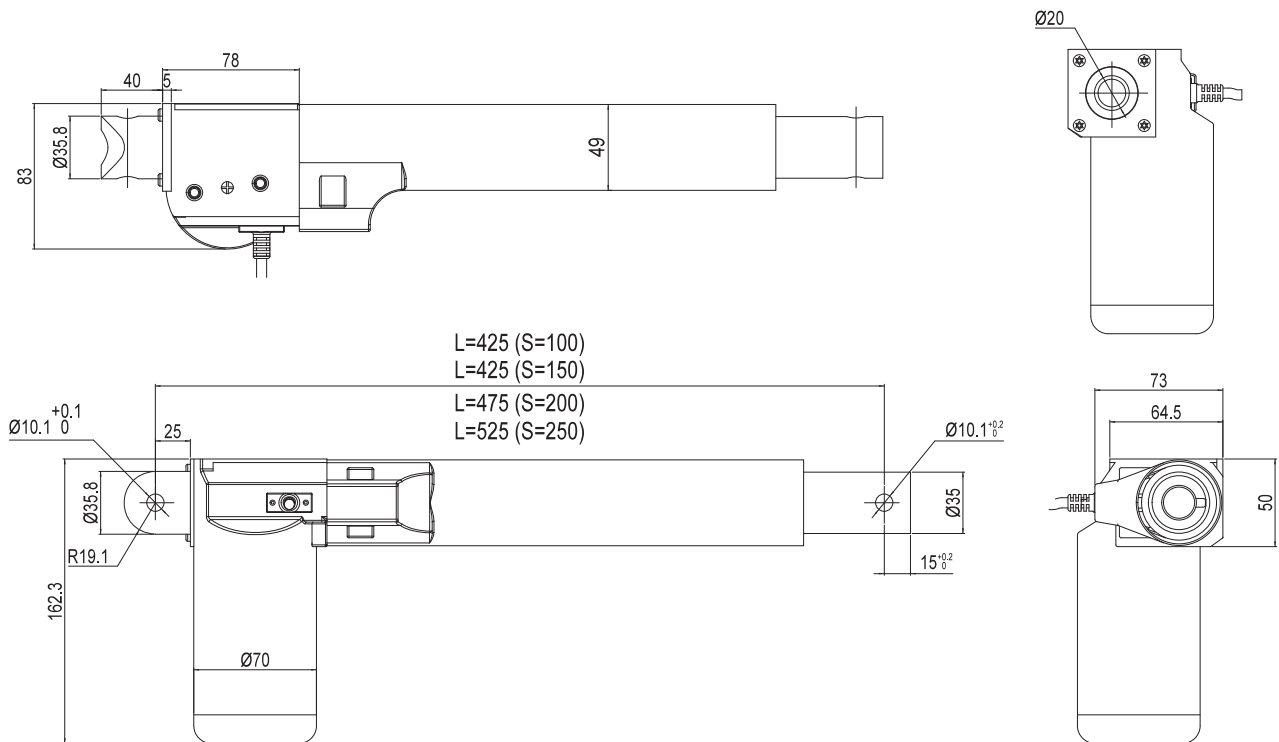
Duty Cycle:	10%, max. 2min.continuous working and 18 min.off
Operating Temperature:	+5 °C to +40°C
Reserve Temperature:	-10°C to 50°C
Supporting Control Box:	match with JIECANG control box
Relative Humidity:	20% to 90% at 30 °C, non-condensing
Atmospheric Pressure:	700 to 1060hPa

Dimension Drawing

End clevis A



End clevis 28

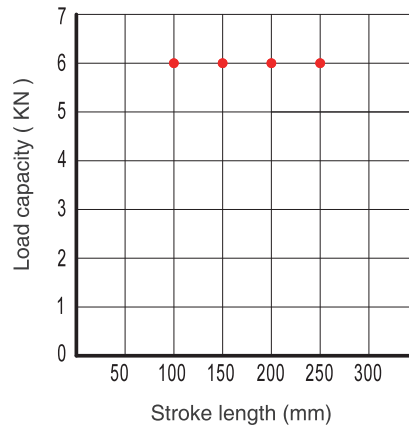


Technical Data-Standard Value

Input voltage (VDC)	Spindle pitch (mm)	Max. load in push (N)	Max. load in pull (N)	Mechanical self-lock (N)	Speed at no load/full load (mm/s)	Current at full load (A)
24	4.25	6000	/	6000	5.8/3.5	≤7
29	4.25	6000	/	6000	7/4.2	≤7

Remarks: It can achieve better self-locking ability with Jiecang control box;
 The above data is the standard value of the test data (inspection specification) at room temperature of 25°C.

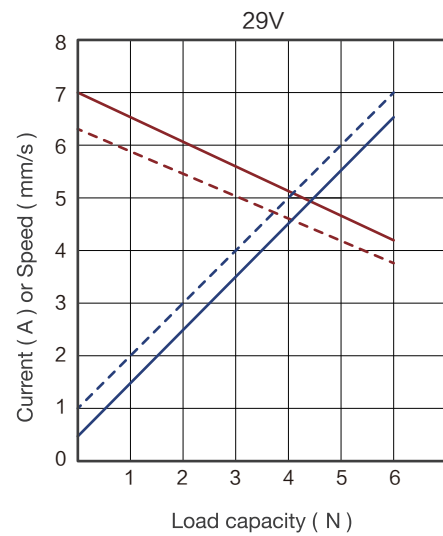
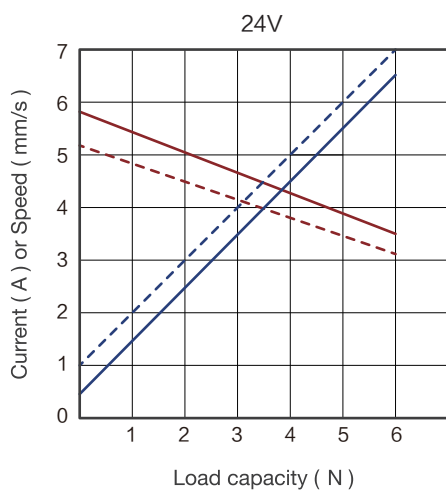
Diagram of relationship between stroke length and load



Characteristic Curve

- Typical speed ————
- Min. speed - - - - -
- Typical current ————
- Max. current - - - - -

6000N



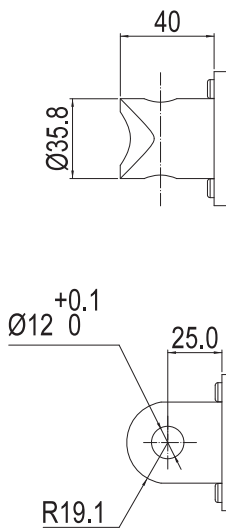
Ordering Example

Take **JC35DS063D524150/425VG28G00023D0** for example

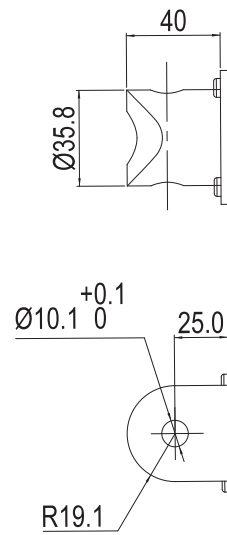
Model	JC35DS	
Optional features	X	0 = Hand crank
Load in push	X	6 = 6000N
Speed at full load	X	3D5 = 3.5mm/s
Input voltage	XX	24 = 24VDC
Stroke length/ Installation dimension	XXX/XXX	Stroke length = XXX Installation dimensions = XXX
Clevis directions	X	H = H direction / V = V direction
Color	X	G=Gray / B = Black
End clevis specification	X	28 = DS steel , hole ϕ 12 A = without slot, hole ϕ 10.1
End clevis material	X	0 = Top clevis internal thread M20*1, depth 20mm
Top clevis specification	XX	0 = No brake
Brake specification	X	02 = 4-pin DIN plug
Type of plug and cable	XX	14 = 2-core straight line without plug
Cable length	XXX	2D0 = 2.0m 3D0 = 3.0m

Ordering Details

End clevis A



End clevis 28



Top clevis 0





Strictly abiding by medical safety certifications

Passed EMC tests. To ensure our products pass all kinds of tests domestic or abroad.



Communication protocol development

Aiming at different applications, develop more extensive functions for control system.



Professional customization

Powerful R&D strength, fully satisfy customers' needs. Development cycle is about 10 days, seizing more market opportunities



Intelligent Control of Bluetooth

Mobile phone as the remote, applying in home care. Market pioneer, Jiecang provides better choices



Wireless Communication

Controllers adopt high-frequency wireless system. It can avoid interference mixing with signal receivers, assisting in remote control over medical equipment.



Latest Weighing System

Designed for physiotherapy beds and medical care beds. Cantilever carrying weighing sensor, it is applicable to different bedsteads dispensing with any adjustment

Disclaimer and Exclusion of Liability

The user must determine the suitability of JIECANG products under specific conditions. JIECANG is committed to providing the latest product information. However, as JIECANG' s product are constantly improving, it is possible to make changes to JIECANG' s product without prior notice. Therefore, JIECANG cannot guarantee the correctness and authenticity of the product information. Although JIECANG will do its best to meet the order requirements, due to the above reasons, JIECANG cannot guarantee the delivery capacity of any specific product.

Therefore, JIECANG reserves the right to stop selling any products listed on the website or product catalog or other JIECANG written materials. All sales activities must be carried out in accordance with the requirements of JIECANG sales and Delivery Standard Clauses. For copies of relevant documents, please contact JIECANG.



Notes for mounting and usage can be found in the corresponding mounting manual