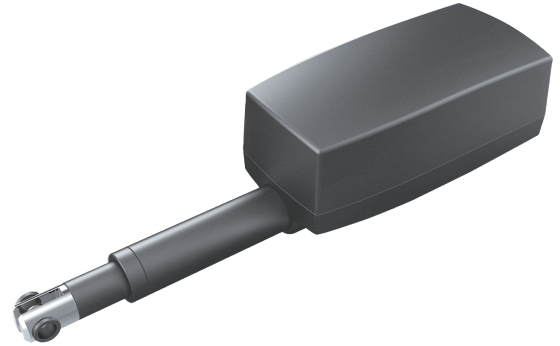


JC35A Linear Actuator

JC35A is a actuator with compact design, small size, low noise and high reliability;

With the following configurations: JC35A-1500N; JC35A-3000N;

It can be used in thrust and pull applications, with a maximum thrust of 3000N and a maximum pull of 1500N.



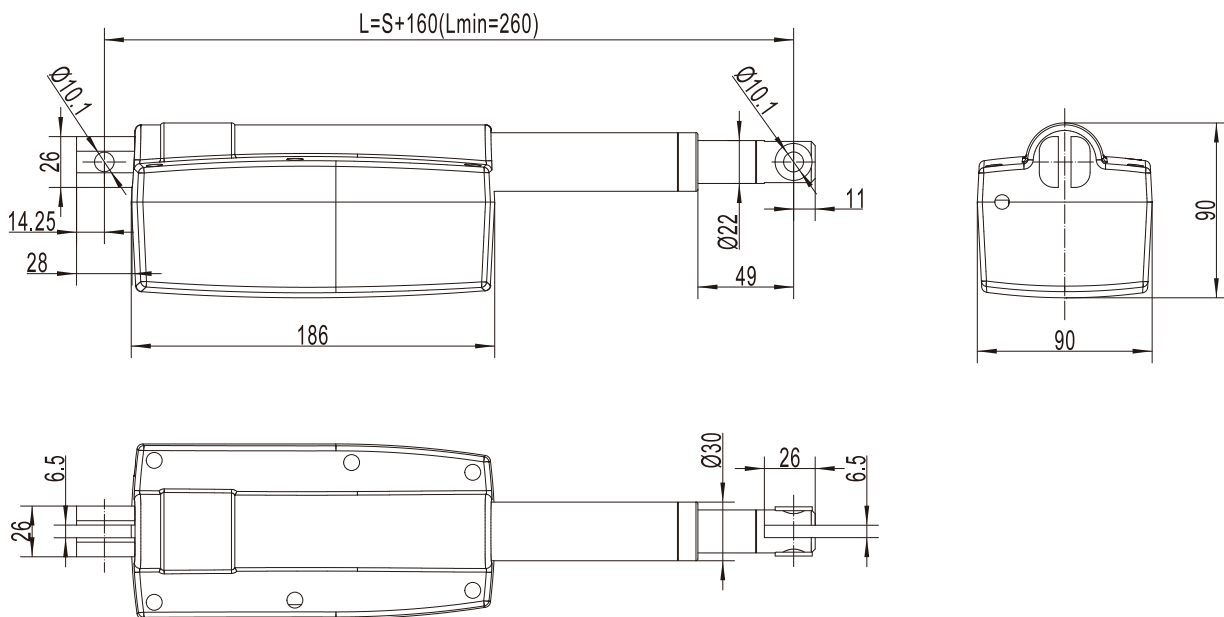
Features And Options

Dynamic load push(N):	1500 3000
Dynamic load pull (N):	1500
Colour:	Black
IP Grade:	IP54
Stroke Length:	1500N: 100-450mm 3000N: 100-450mm
Installation Dimensions:	L = S+160 (Lmin=260)
Noise Level:	≤55dB (environmental noise≤40dB)
Weight:	About 2.2kg (This is the weight of 200/360,different stroke length and installation)
Static bending moment:	lateral load is not allowed
Approval:	EN 55014-1:2006+A1:2009 EN 61000-3-2:2006+A2:2009,EN 61000-3-3:2008 EN 55014-2:1997+A1:2001+A2:2008

Usage

Duty Cycle:	10%, max. 2min.continuous working and 18 min.off
Operating Temperature:	+5 °C to +40°C
Reserve Temperature:	-10°C to 50°C
Supporting Control Box:	JCB35A / JCB35E / JCB35T
Relative Humidity:	20% to 90% at 30 °C, non-condensing
Atmospheric Pressure:	700 to1060hPa

Dimension Drawing

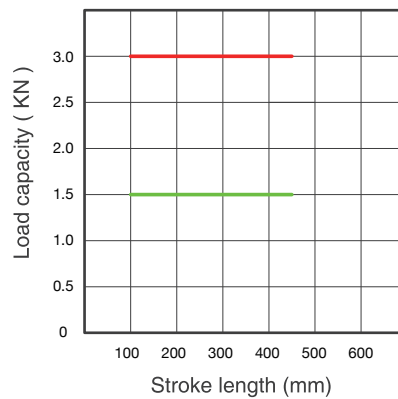


Technical Data-Standard Value

Input voltage (VDC)	Spindle pitch (mm)	Max. load in push (N)	Max. load in pull (N)	Mechanical self-lock (N)	Speed at no load/full load (mm/s)	Current at full load (A)
24	5	1500	/	1500	15/9	≤4.5
24	2.5	3000	1500	3000	8/5	≤4.5
12	2.5	3000	1500	3000	8.5/5.5	≤9

Remarks: It can achieve better self-locking ability with Jiecang control box;
 The above data is the standard value of the test data (inspection specification) at room temperature of 25°C.

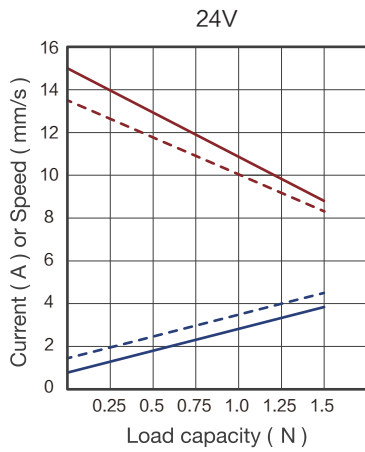
Diagram of relationship between stroke length and load



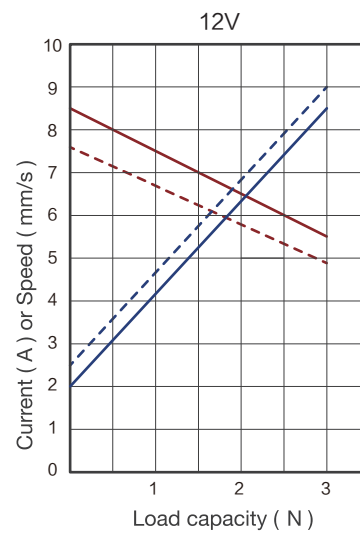
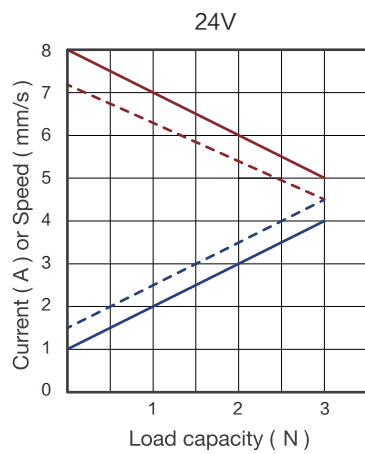
Characteristic Curve

Typical speed ———
 Min. speed - - - -
 Typical current ———
 Max. current - - - -

1500N



3000N



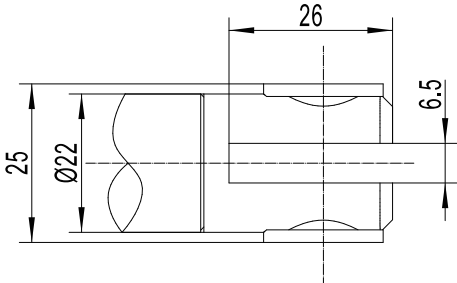
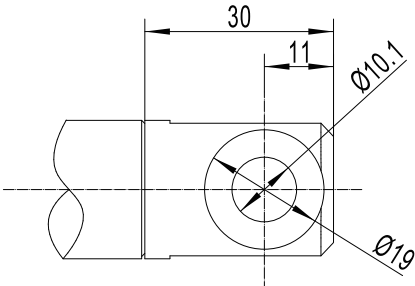
Ordering Example

Take **JC35A03524200/360VBDSD0002D0** for example

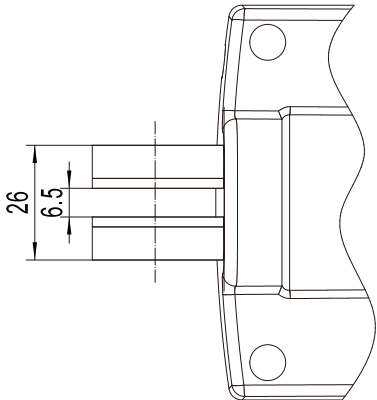
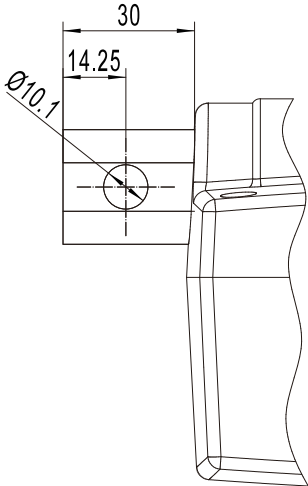
Model	JC35A	
Optional features	X	0 = Standard
Load in push	X	1D5 = 1500N / 3 = 3000N
Speed at full load	X	5 = 5mm/s 5D5 = 5.5mm/s 9 = 9mm/s
Input voltage	XX	12 = 12VDC 24 = 24VDC
Stroke length/ Installation dimension	XXX/XXX	Stroke length = XXX Installation dimensions = XXX
Clevis directions	X	V = V direction
Color	X	B = Black
End clevis specification	X	D = Slot 6.5, Φ 10.1
End clevis material	X	S = Plastic
Top clevis specification	XX	D = Slot 6.5, Φ 10.1
Brake specification	X	02 = No brake
Type of plug and cable	XX	00 = Microphone is inserted into 2-core straight line; 01 = The microphone is plugged into a 2-core spring wire; 02 = 4-core straight plug 2-core straight line; 14 = 2-core straight line without plug; 15 = 2-core spring wire without plug
Cable length	XXX	1D5 = 1.5m 2D0 = 2.0m 2D5 = 2.5m

Ordering Details

Top clevis



End clevis





Strictly abiding by medical safety certifications

Passed EMC tests. To ensure our products pass all kinds of tests domestic or abroad.



Communication protocol development

Aiming at different applications, develop more extensive functions for control system.



Professional customization

Powerful R&D strength, fully satisfy customers' needs. Development cycle is about 10 days, seizing more market opportunities



Intelligent Control of Bluetooth

Mobile phone as the remote, applying in home care. Market pioneer, Jiecang provides better choices



Wireless Communication

Controllers adopt high-frequency wireless system. It can avoid interference mixing with signal receivers, assisting in remote control over medical equipment.



Latest Weighing System

Designed for physiotherapy beds and medical care beds. Cantilever carrying weighing sensor, it is applicable to different bedsteads dispensing with any adjustment

Disclaimer and Exclusion of Liability

The user must determine the suitability of JIECANG products under specific conditions. JIECANG is committed to providing the latest product information. However, as JIECANG' s product are constantly improving, it is possible to make changes to JIECANG' s product without prior notice. Therefore, JIECANG cannot guarantee the correctness and authenticity of the product information. Although JIECANG will do its best to meet the order requirements, due to the above reasons, JIECANG cannot guarantee the delivery capacity of any specific product.

Therefore, JIECANG reserves the right to stop selling any products listed on the website or product catalog or other JIECANG written materials. All sales activities must be carried out in accordance with the requirements of JIECANG sales and Delivery Standard Clauses. For copies of relevant documents, please contact JIECANG.



Notes for mounting and usage can be found in the corresponding mounting manual