

JCHN35H2 Nurse Controller

Application field - Medical Line
Preferably in the medical industries.

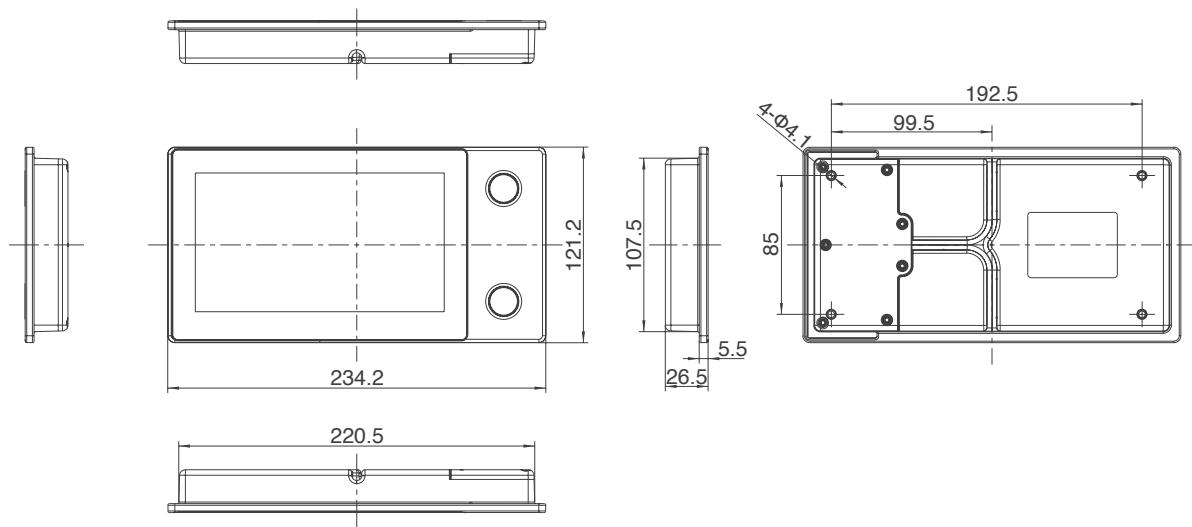
As an embedded nurse controller with 7-inch high-definition large screen display , it features 1280 * 800 resolution and can be operated by touch. The user can input the information of patient , realize the intelligent operation such as bed control, weighing record and system setting and set the alarm of leaving bed. The touch screen operating system is more in line with the modern lifestyle, and the two physical buttons guarantee the operation in case of touching operation malfunction or emergency. When the controller box is in an abnormal state, the nurse controller will give us an abnormal reminder displayed in any interface.



General Features

Access control:	Magnet key
Housing Colour :	Gray
LED indication:	LED to indicate unlocking area and unlocking reminder
Front cover:	JIECANG standard or Customised front cover
IP grade:	Max. IPX6
Supporting control box:	Match with JIECANG control box
Weight:	565g
Screen type:	7-inch capacitance touchscreen, HD full view angle display
Screen resolution:	1280*800 pixels
Mounting:	Fixed mounting, screws for front side
Languages:	English,Chinese
Operating temperature:	+5°C to +40°C
Storage temperature:	-10°C to +50°C
Relative humidity:	20% to 80% (non-condensing)
Atmospheric pressure:	860 to 1060hpa
Altitude:	Max. 2000m

Dimension Drawing



Instruction

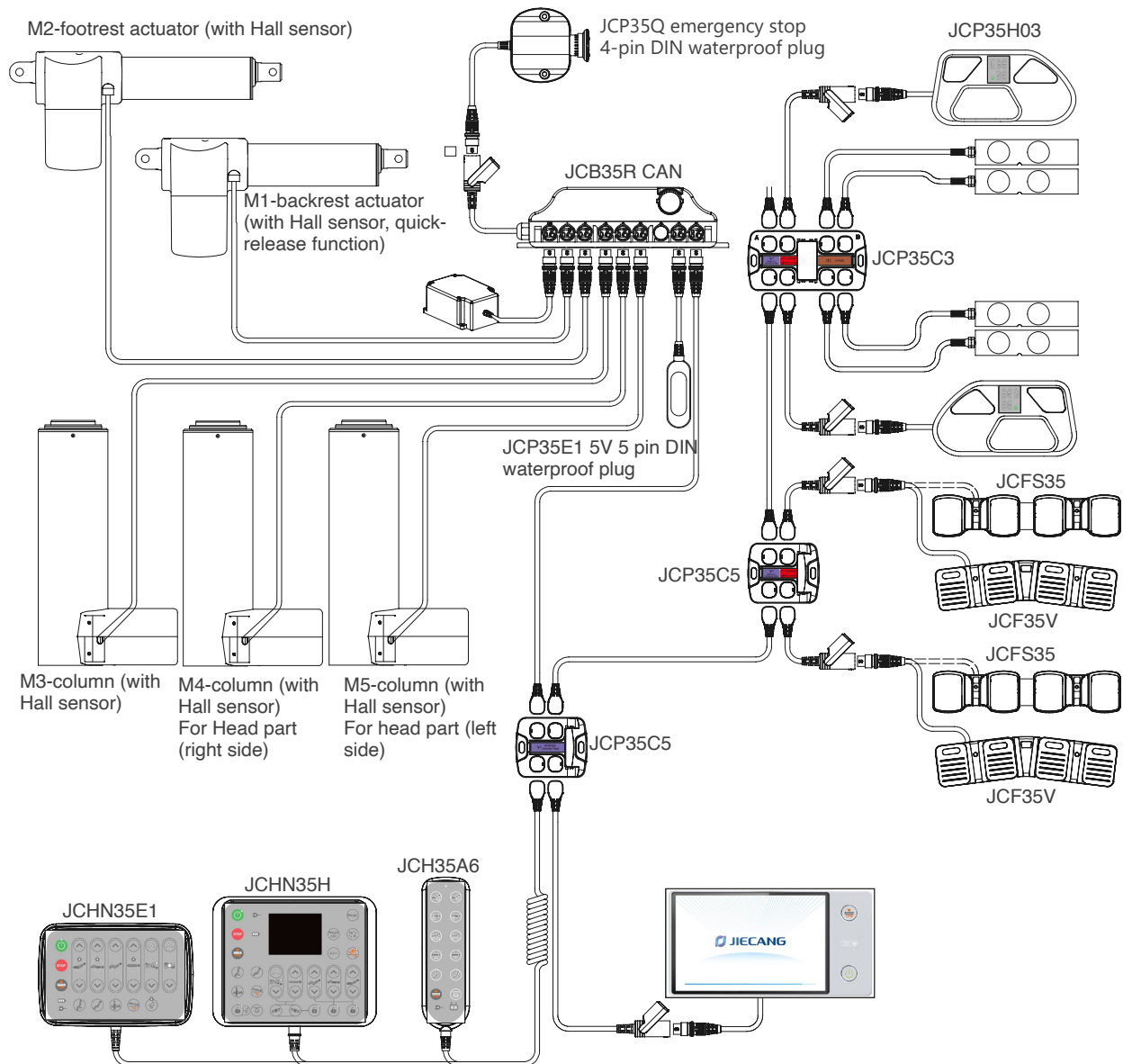
1. Personal information can be filled in according to the navigation bar, and personal information can be protected by password
2. Operate the bed according to the interface icons. Press and hold the button, the corresponding actuator will perform the action. The angle can be displayed in real time and be reset. The button functions can be locked.
3. Physical buttons for quick operation
4. The latest weighing technology which can show real-time weighing information. The historical weighing information is automatically recorded, and the recording time is 6:00, 12:00 and 18:00 in every day, and it will form a curve chart. You can keep data for nearly a month
5. Out of bed alarm. The volume is adjustable, and it will not exit the alarm when you switch the interface to increase or decrease the volume during the alarm
6. You can enter the system settings and select the appropriate operation, changing the time and language, etc.

Ordering Key

Take **JCHN35H2B0G08D40D8** for example

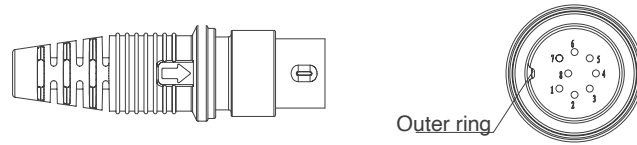
Model	JCHN35H2	
Background light	B	A = With background light / B = Without background light
Row of buttons	0	0 = None
Color	G	G = Gray
Panel code	0	0 = None
Plug code	8D4	8D4 = 8 pin DIN plug 10P1 = 10 pin crystal bending plug
Cable length	0D8	0D8 = 0.8M

JCHN35H2 platform – system overview

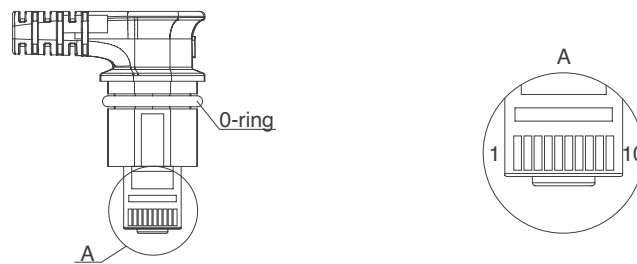


Plug

8 pin DIN plug: straight cable: 8D4 (suitable for Jiecang straight plug control box)



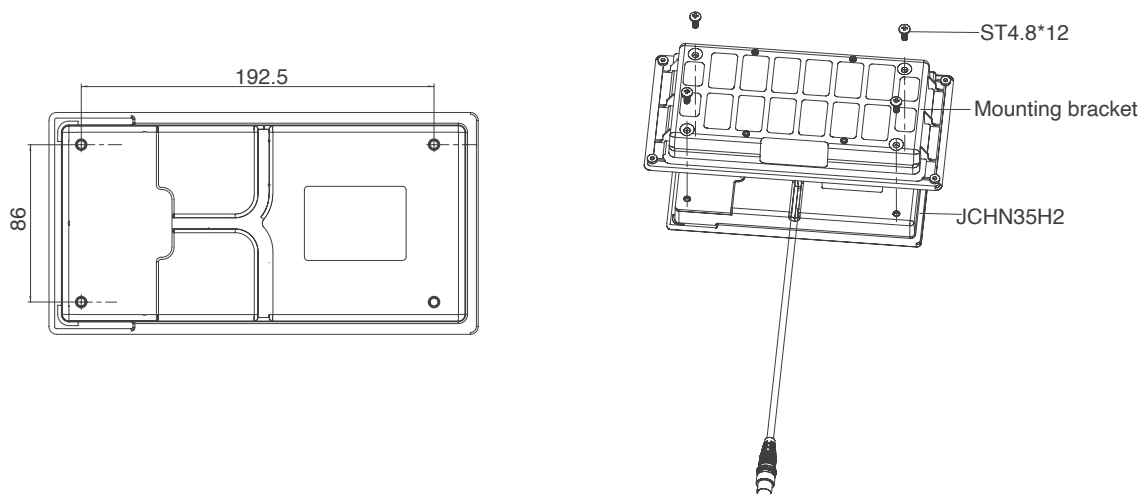
10 pin crystal bending plug: straight cable: 10H1, coiled cable: 10P1 (suitable for Jiecang's JCB35T2, JCB35T3, JCB35T6 series bending plug control box)



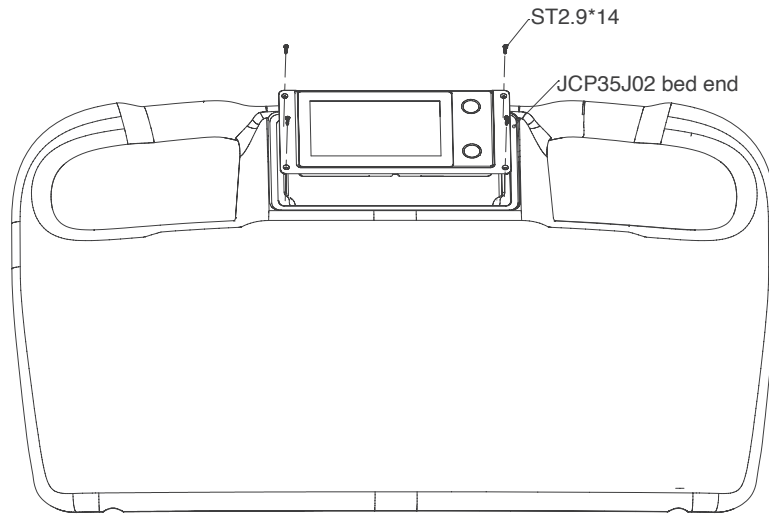
Note: The number of matching actuators is different, and the matching control box model is different, and the plug code will be different. Please contact the salesman in the corresponding area of Jiecang for confirmation before placing an order.

Installation

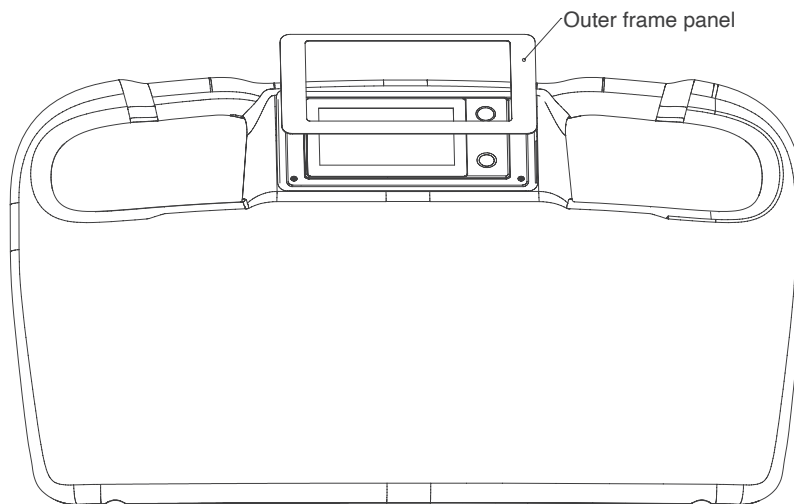
1. Assemble the mounting bracket and JCHN35H2 together with self-tapping screws.



2. Use self-tapping screws to position the mounting bracket to the bed end.



3. Attach the outer frame panel to the bed end.



Conditions of use

The user must determine the suitability of JIECANG products under specific conditions. JIECANG is committed to providing the latest product information. However, as JIECANG's products are constantly improving, it is possible to make changes to JIECANG's products without prior notice. Therefore, JIECANG cannot guarantee the correctness and authenticity of the product information. Although JIECANG will do its best to meet the order requirements, due to the above reasons, JIECANG cannot guarantee the delivery capacity of any specific product.

Therefore, JIECANG reserves the right to stop selling any products listed on the website or product catalog or other JIECANG written materials. All sales activities must be carried out in accordance with the requirements of JIECANG sales and Delivery Standard Clauses. For copies of relevant documents, please contact JIECANG.



Strictly abiding by medical safety certifications

Passed EMC tests. To ensure our products pass all kinds of tests domestic or abroad.



Communication protocol development

Aiming at different applications, develop more extensive functions for control system.



Professional customization

Powerful R&D strength, fully satisfy customers' needs. Development cycle is about 10 days, seizing more market opportunities



Intelligent Control of Bluetooth

Mobile phone as the remote, applying in home care. Market pioneer, Jiecang provides better choices



Wireless Communication

Controllers adopt high-frequency wireless system. It can avoid interference mixing with signal receivers, assisting in remote control over medical equipment.



Latest Weighing System

Designed for physiotherapy beds and medical care beds. Cantilever carrying weighing sensor, it is applicable to different bedsteads dispensing with any adjustment



Notes for mounting and usage can be found in the corresponding mounting manual